

# Noyes Test & Inspection

## **Installation Procedure for Active Sync on Windows Vista PCs**

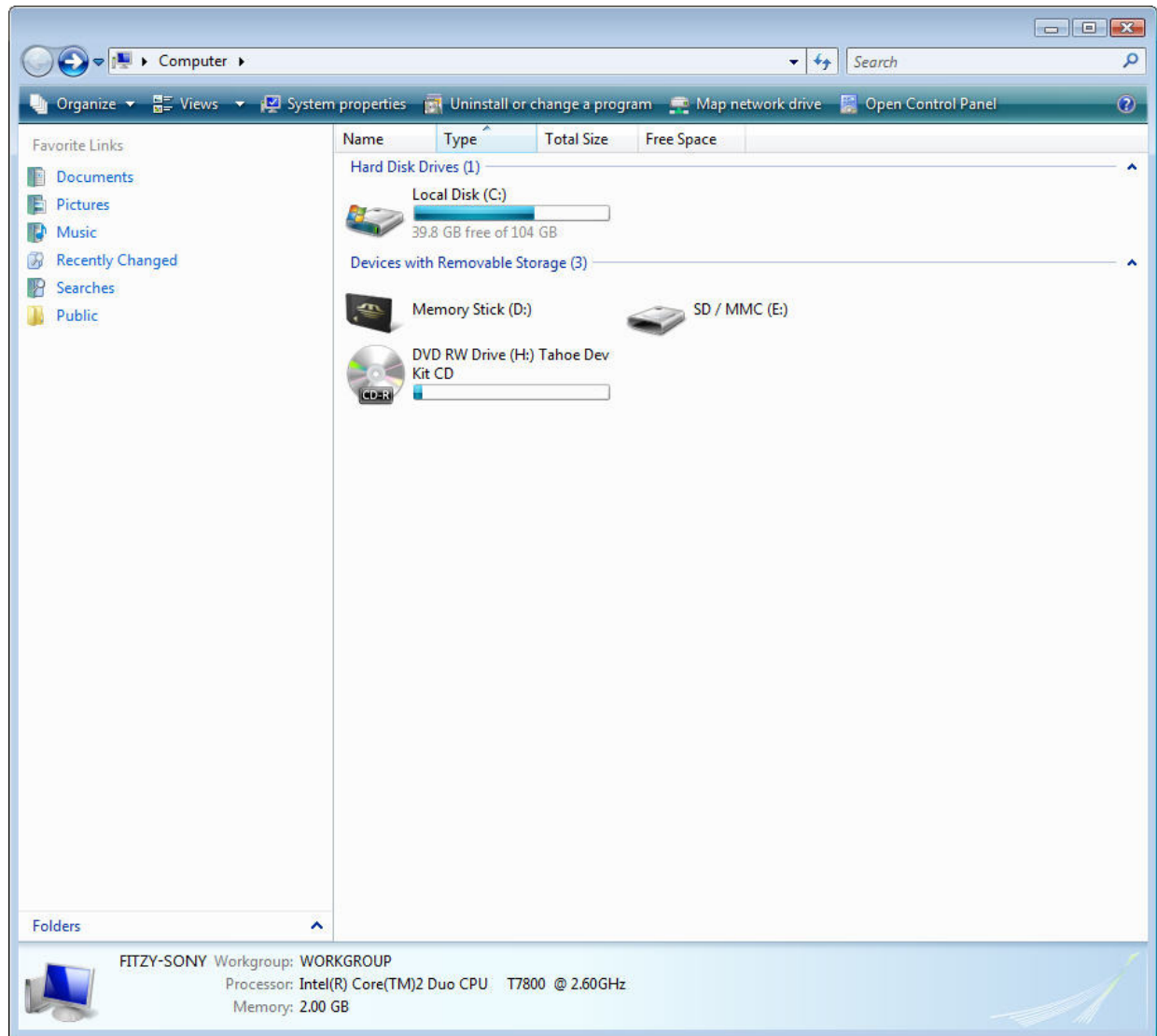
- Turn on M200 OTDR and complete boot up.
- Plug M200 OTDR into Vista PC with mini-USB to USB cable
- When the “Found New Hardware” pop-up appears, hit the Cancel button
- Vista Auto play pop-up will appear. Hit the close button

Click on...

Start,

Computer,

System Properties

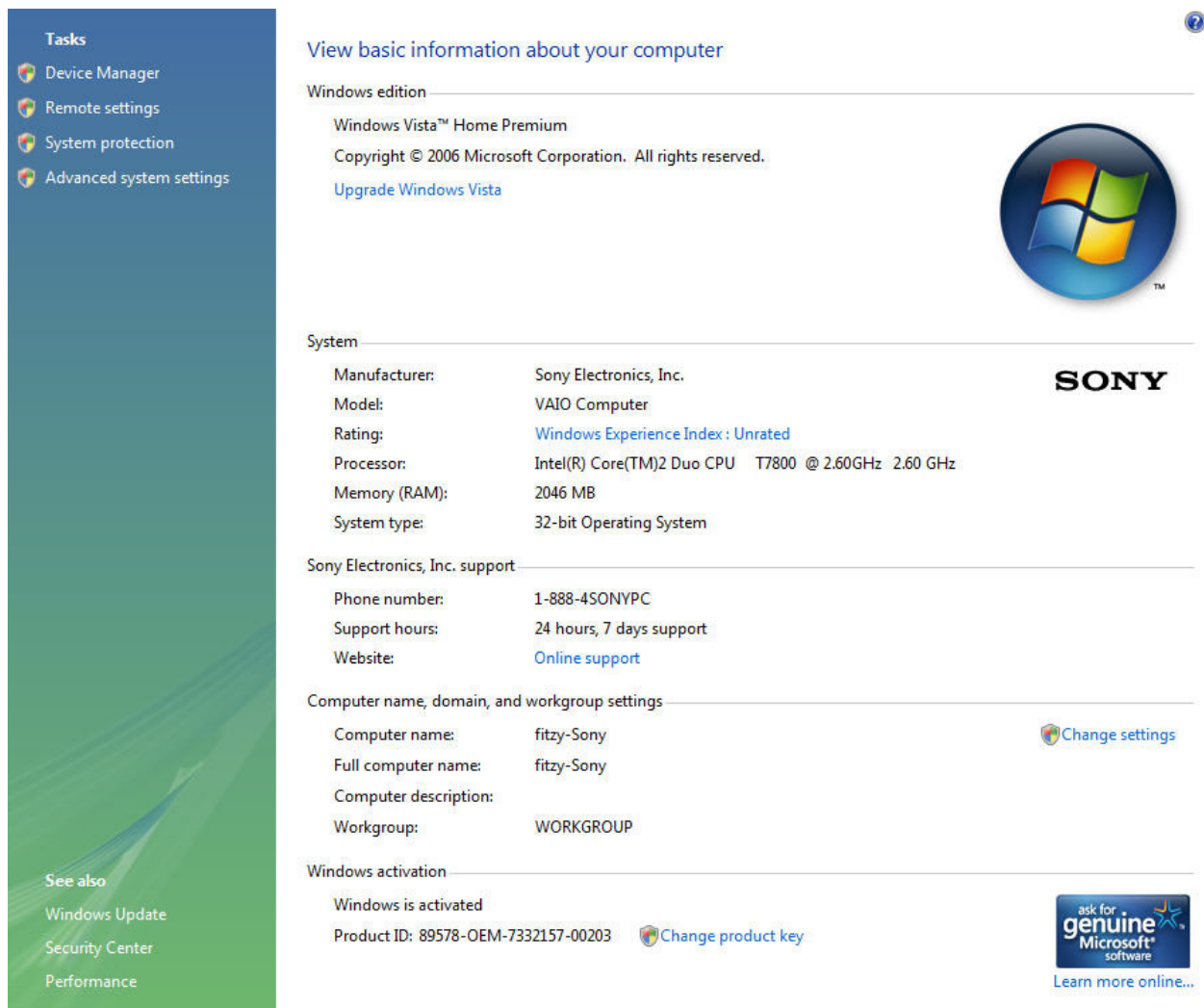


Then click on...

Device Manager,

User Account Control,

then click Continue



The screenshot shows the Windows Vista System Information page. On the left is a navigation pane with a 'Tasks' section containing links to Device Manager, Remote settings, System protection, and Advanced system settings. Below that is a 'See also' section with links to Windows Update, Security Center, and Performance. The main content area is titled 'View basic information about your computer' and includes sections for Windows edition (Windows Vista™ Home Premium), System information (Manufacturer: Sony Electronics, Inc., Model: VAIO Computer, Processor: Intel(R) Core(TM)2 Duo CPU T7800 @ 2.60GHz, Memory (RAM): 2046 MB, System type: 32-bit Operating System), Sony Electronics support (Phone number: 1-888-4SONYPC, Support hours: 24 hours, 7 days support, Website: Online support), Computer name and domain settings (Computer name: fitzy-Sony, Full computer name: fitzy-Sony, Computer description: WORKGROUP), and Windows activation (Windows is activated, Product ID: 89578-OEM-7332157-00203). The Windows logo and Sony logo are also visible.

Tasks

- Device Manager
- Remote settings
- System protection
- Advanced system settings

See also

- Windows Update
- Security Center
- Performance

View basic information about your computer

Windows edition

Windows Vista™ Home Premium

Copyright © 2006 Microsoft Corporation. All rights reserved.

[Upgrade Windows Vista](#)

System

Manufacturer: Sony Electronics, Inc.

Model: VAIO Computer

Rating: [Windows Experience Index : Unrated](#)

Processor: Intel(R) Core(TM)2 Duo CPU T7800 @ 2.60GHz 2.60 GHz

Memory (RAM): 2046 MB

System type: 32-bit Operating System

Sony Electronics, Inc. support

Phone number: 1-888-4SONYPC

Support hours: 24 hours, 7 days support

Website: [Online support](#)

Computer name, domain, and workgroup settings

Computer name: fitzy-Sony [Change settings](#)

Full computer name: fitzy-Sony

Computer description: WORKGROUP

Workgroup: WORKGROUP

Windows activation

Windows is activated

Product ID: 89578-OEM-7332157-00203 [Change product key](#)

[ask for genuine Microsoft software](#)

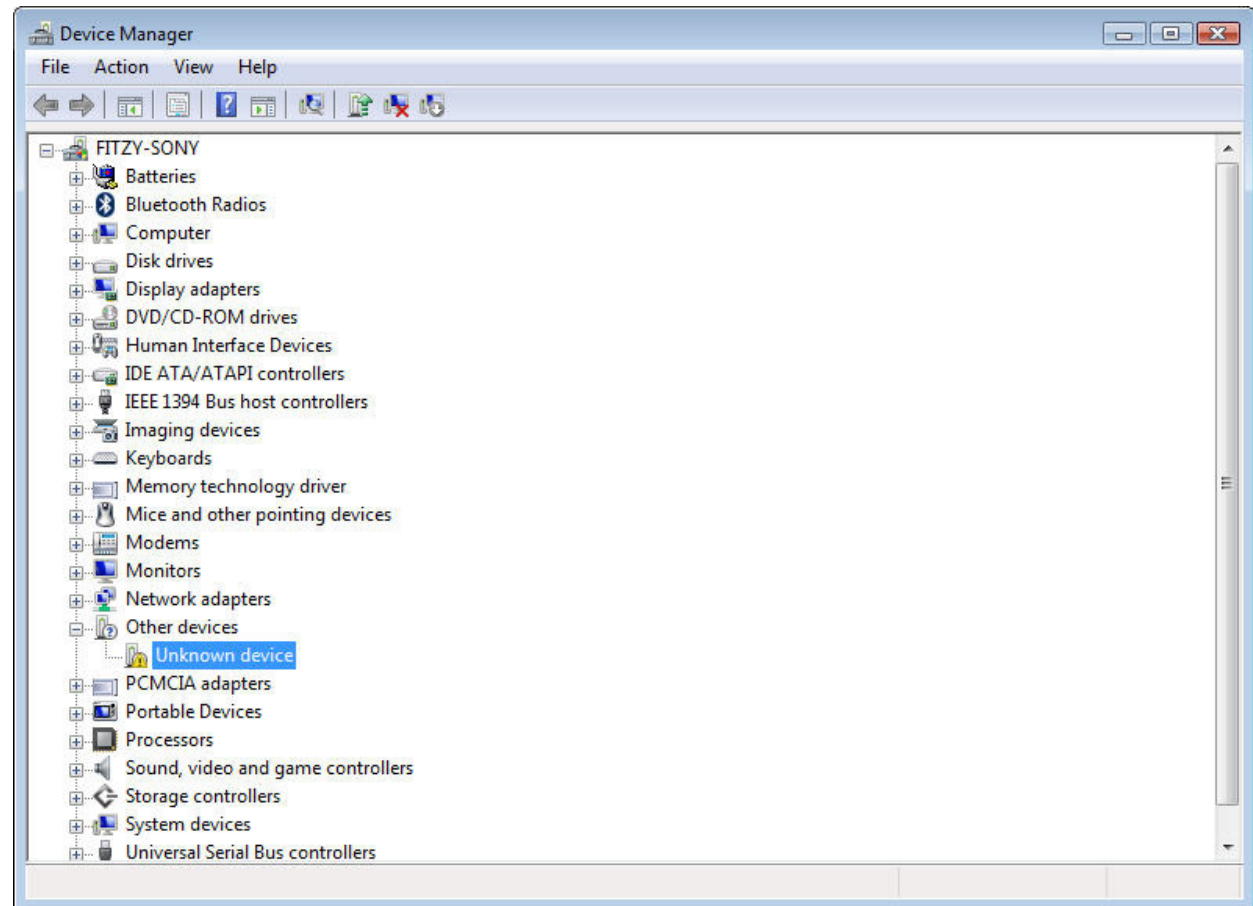
[Learn more online...](#)

In Device Manager search for:

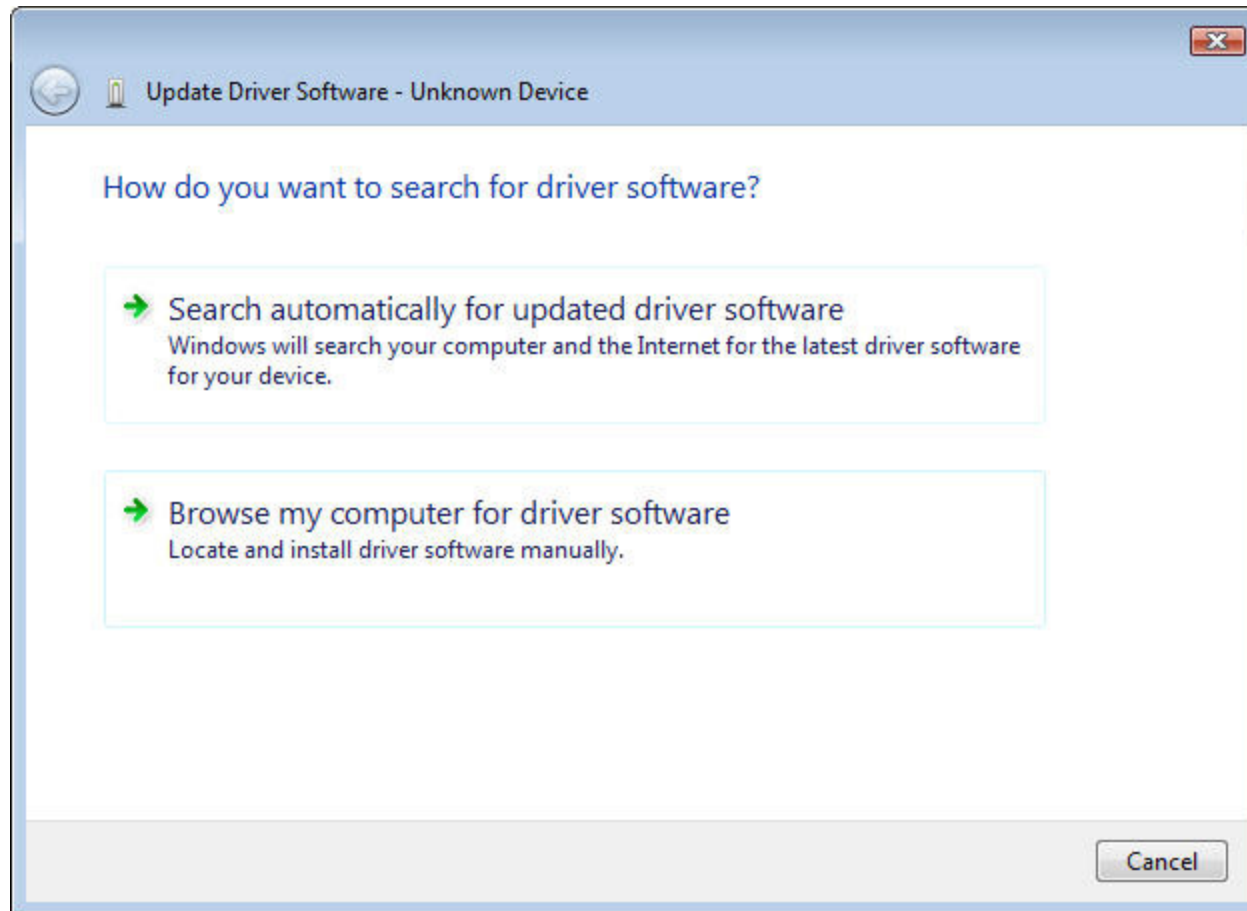
- Other devices  
    Unknown device

Right click Unknown device

Select: Update Drive Software

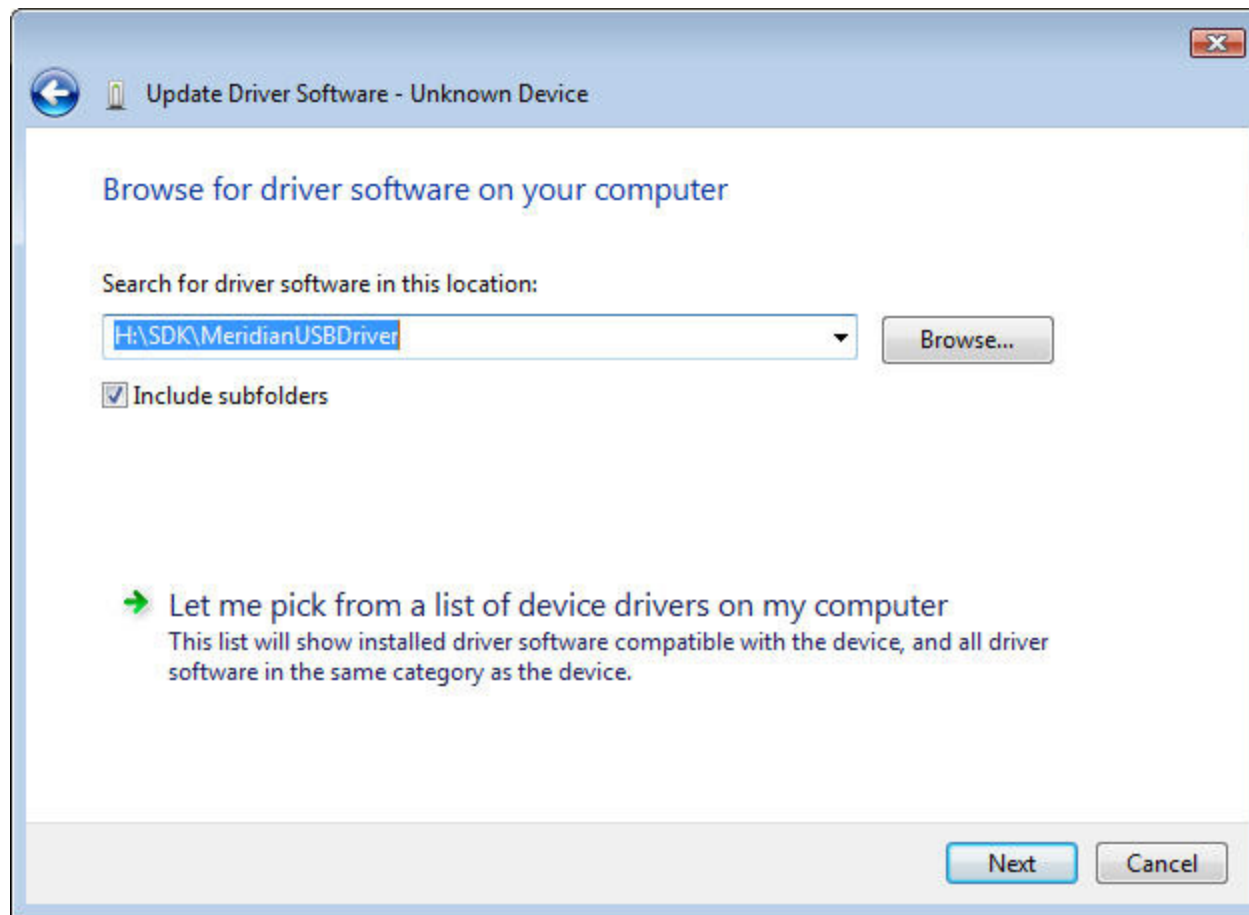


Select: **Browse my computer for driver software**



Select: Let me pick from a list of devices drivers on my computer

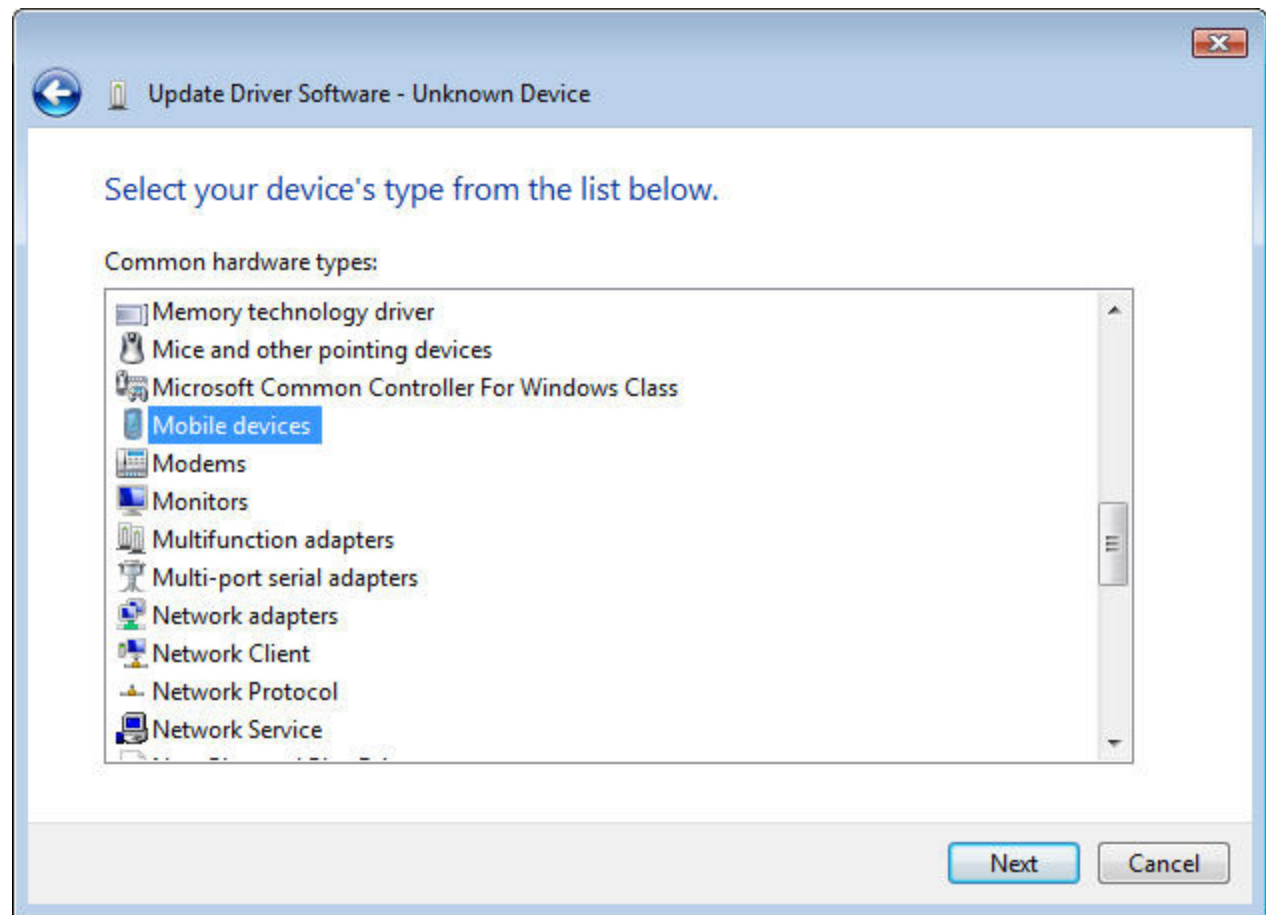
Click: Next



From “Select your device’s type...”

Click “Mobile devices”

Then click Next

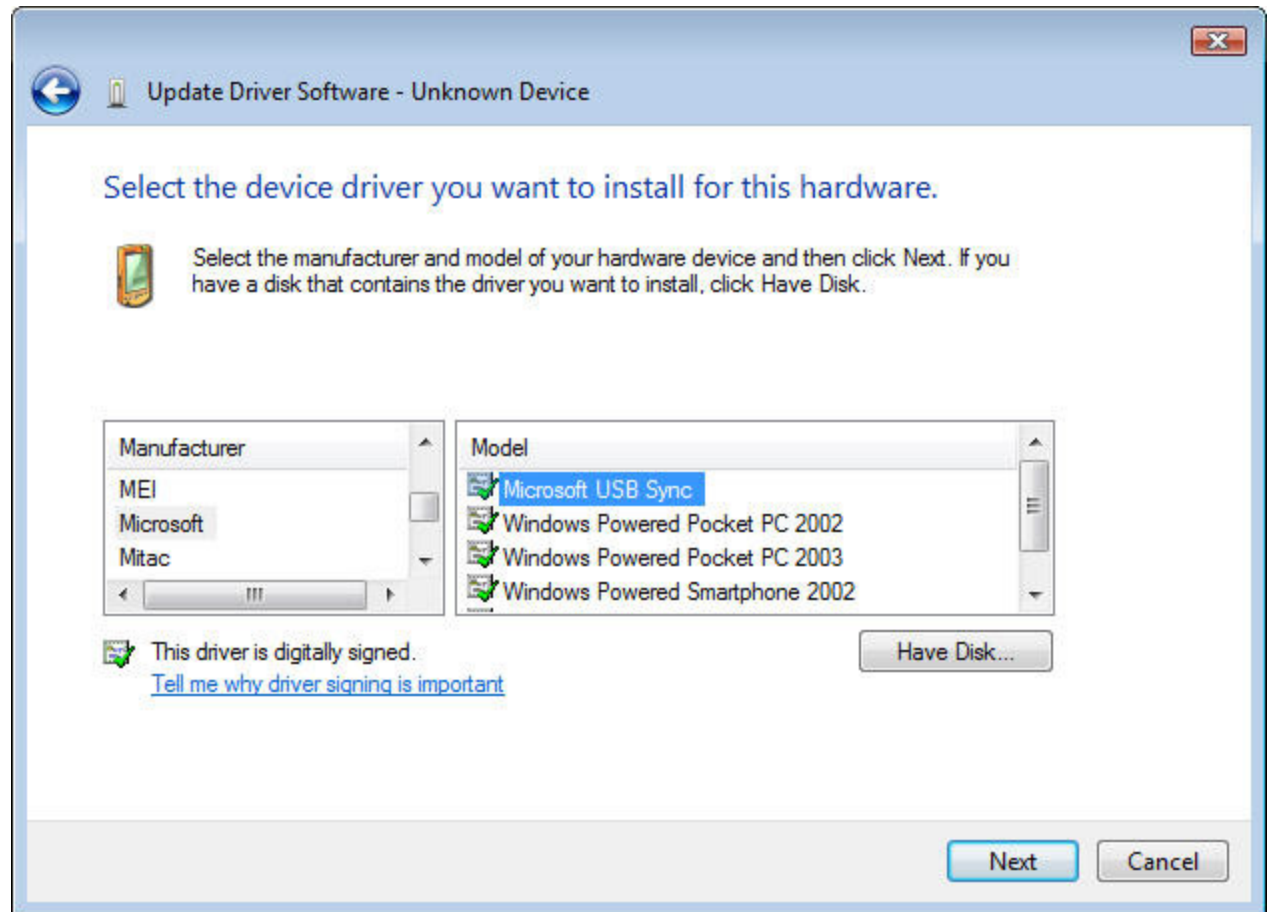


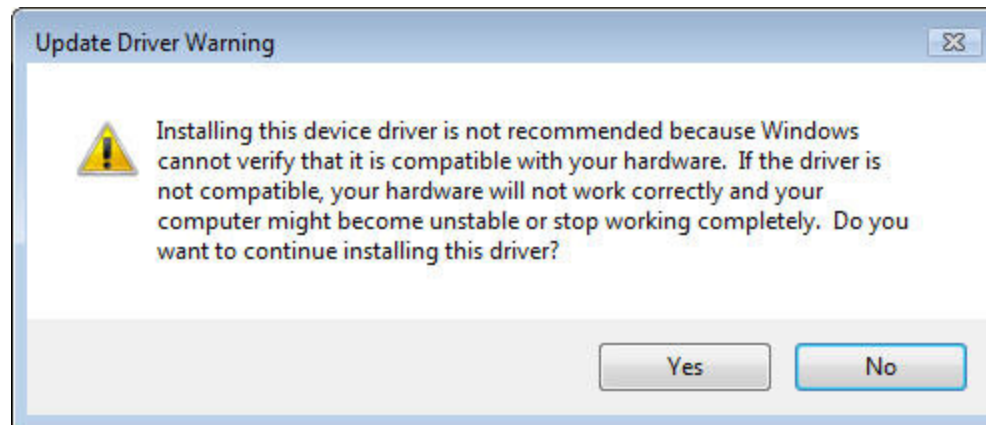
Select:

Manufacturer/Microsoft

Model/Microsoft USB Sync

Then hit Next

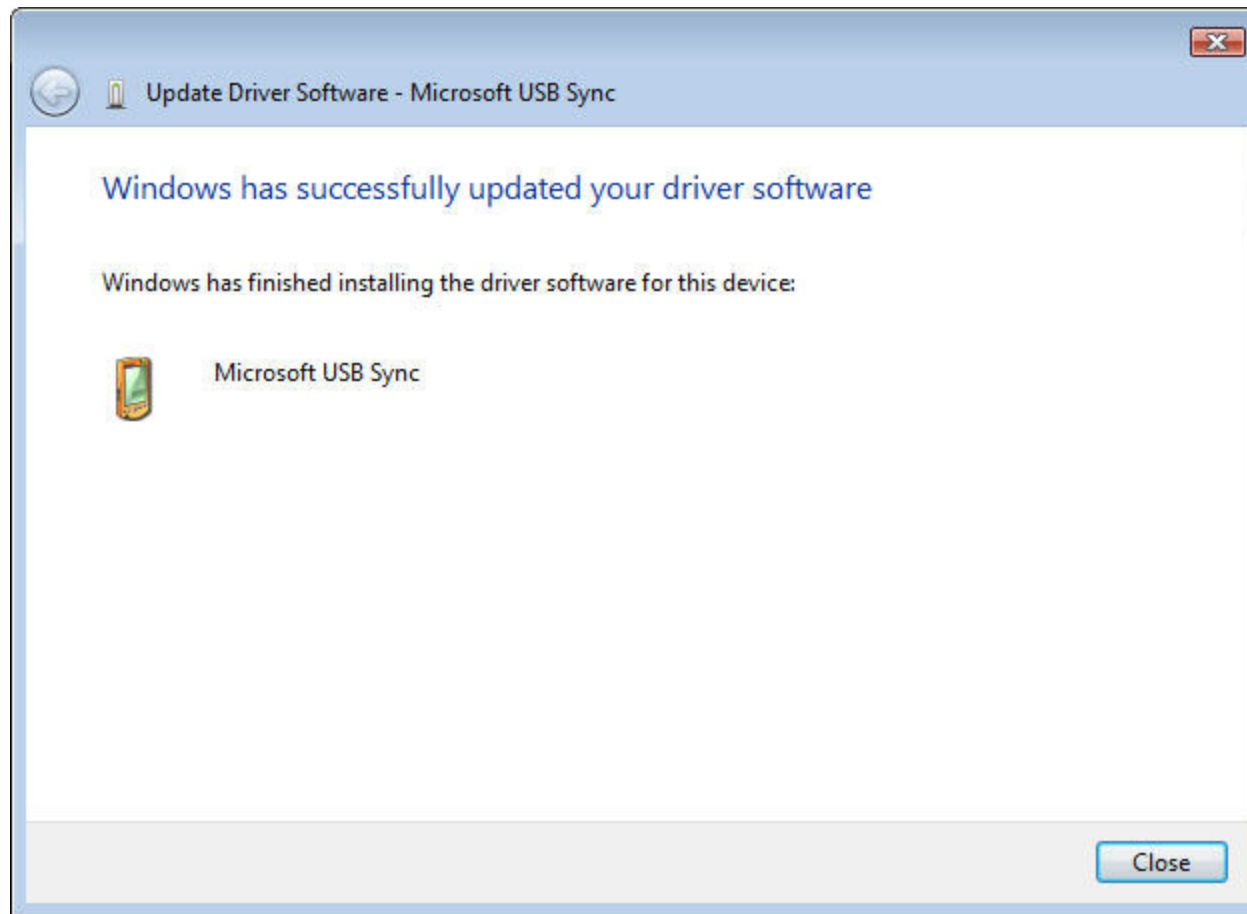




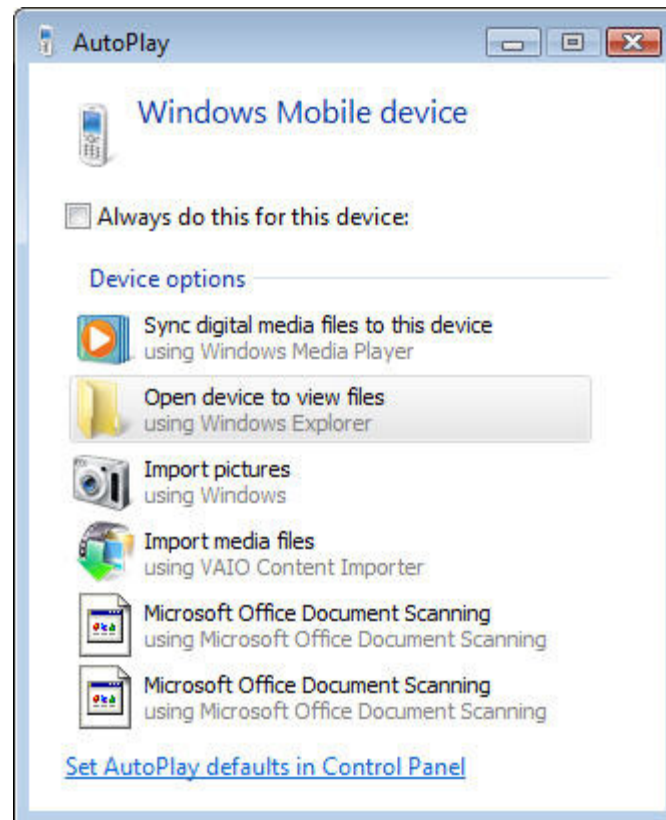
When “Update Driver Warning” pop-up appears, click Yes

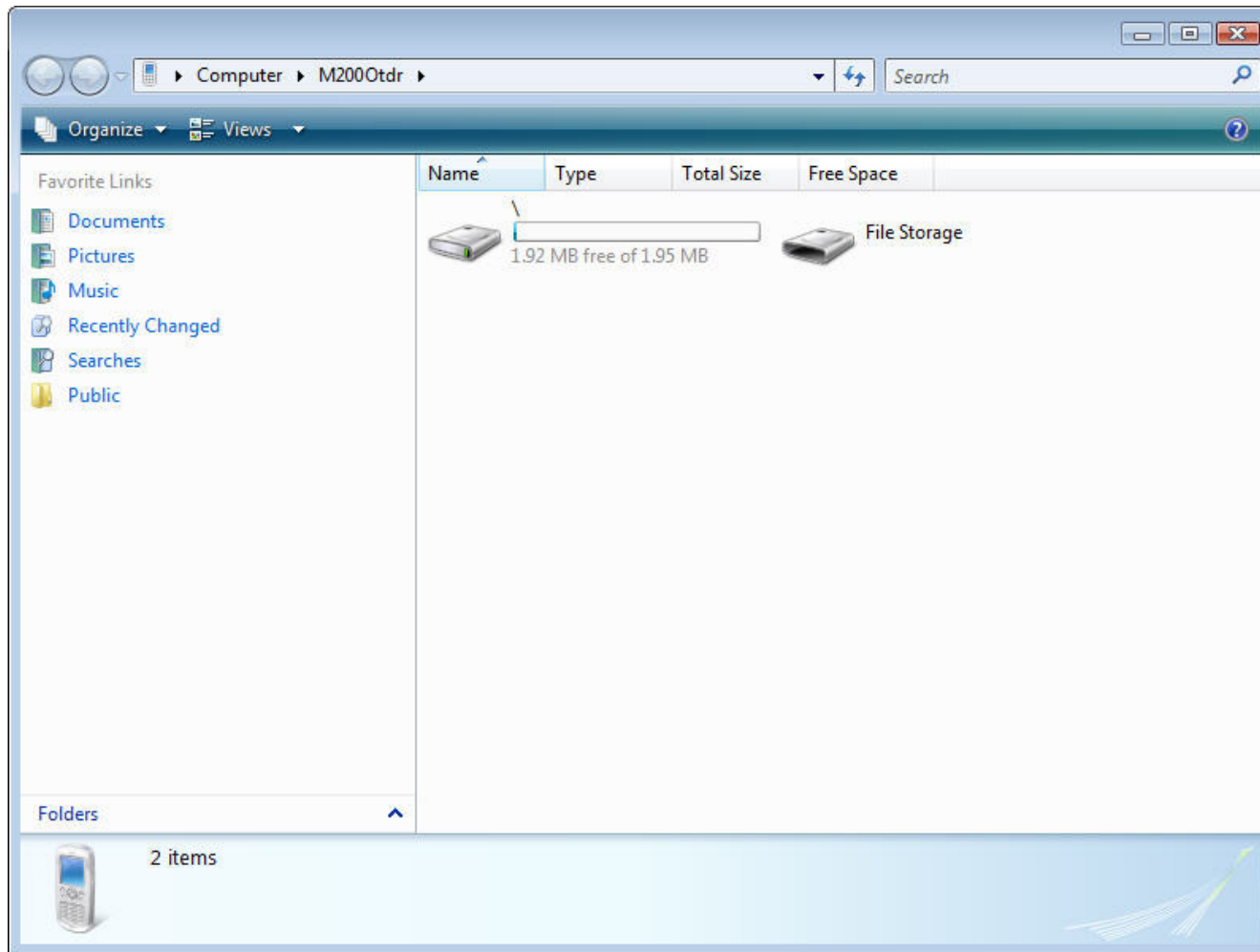
Congratulations, you have successfully updated your driver software.

Click Close



To confirm Windows recognizes your M200, click on “Open device to view files”





Under folders, click on M200 OTDR/File Storage to view trace files

**Questions?**

**[www.AFLtele.com](http://www.AFLtele.com)**

**800-321-5298 or  
603-528-7780**