

LightGuard® Sealed Splice Closure Accessories

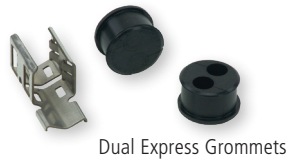


Dual Express Grommets for LG-350XL

Used on the express side of the LG-350XL closure for installing additional branches. Use the drop ports for the express cable while the express ports may be used to introduce small branch cables. Minimum cable diameter is 0.380" - 0.560".

Ordering Information

DESCRIPTION	AFL NO.
Dual Express Grommets for LG-350XL	FC000688



Dual and Quad Express Grommets for LG-350

Used on the express side of the LG-350 closure for installing additional branches. Use the drop ports for the express cable while the express ports may be used to introduce small branch cables. A 4-drop flat grommet may be used if drops are also required. Cable diameter for dual grommets is 0.26" - 0.44"; for quad, 0.24" - 0.382".



Ordering Information

DESCRIPTION	AFL NO.
Dual Express Grommets for LG-350	FC000337
Quad Express Grommets for LG-350	FC000421



4-Port Flat Drop Grommet Kit for LG-350/LG-350-AC

Used with the LG-350 and LG-350-AC Sealed Closures. Allows for quick addition of drop cables as required. Simply replace the drop port grommets with this grommet kit and install standard flat drop cable or round cable up to 0.25" in diameter.

Ordering Information

DESCRIPTION	AFL NO.
4-Port Flat Drop Grommet Kit for LG-350/LG-350-AC	FC000422



Single Cable and 3-Port Flat Drop Grommet Kit for LG-150/LG-250

Used with the LG-150 and LG-250 Sealed Closures. Allows for quick addition of drop cables as required. Simply replace the drop port grommets with this grommet kit. Both closures will accept standard flat drop cable or round cable up to 0.250" in diameter.

Ordering Information

DESCRIPTION	AFL NO.
Single Cable Grommet Kit for the LG-150/LG-250	FC000704
3-Port Flat Drop Grommet Kit for the LG-150/LG-250	FC000655

continued
→

LightGuard® Sealed Splice Closure Accessories (cont.)

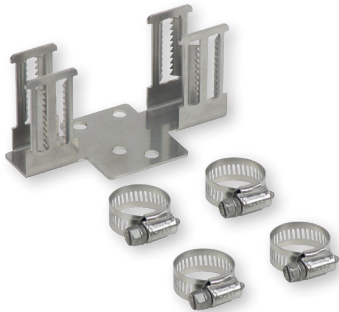


Single Cable Grommet Kits for LG-350-AC and LG-350

Used with the LG-350-AC when a branch cable is required with the drop cables. May also be used for with the LG-350 as replacement grommets. Simply remove the flat drop grommet and replace with the single cable grommets.

Ordering Information

DESCRIPTION	AFL NO.
Single Cable Grommet Kit, Drop Port for LG-350-AC	FC000628
Express Single Cable Grommet Kit for LG-350	FC000726
Drop Single Cable Grommet Kit for LG-350	FC000727



OPGW Cable Bracket for LG-150/LG-250/LG-350

Attaches to the outer grounding studs of the LG-150/LG-250 or LG-350 Sealed Closures. Stainless steel hose clamps secure the OPGW cable to the bracket preventing twisting or movement.

Ordering Information

DESCRIPTION	AFL NO.
OPGW Cable Bracket for the LG-150/LG-250/LG-350 for 2 cables.	FC000683
OPGW Cable Bracket Kit for use when installing Sealed Closures (LG-150/LG-250) to 4 OPGW Cables.	FC000746
OPGW Cable Bracket Kit for use when installing Sealed Closures (LG-350) to 4 OPGW Cables.	FC000747

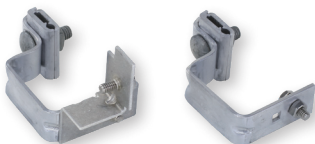


Pole/Wall Mount Bracket for LG-150/LG-250/LG-350

Used with the LG-150, LG-250, LG-350 and LG-350-AC to secure the closures onto poles or walls in a vertical orientation. Slots on the brackets allow for strapping onto steel or cement poles.

Ordering Information

DESCRIPTION	AFL NO.
Pole/Wall Mount Bracket for LG-150/LG-250/LG-350/LG-350-AC	FC000592



Universal Aerial Bracket and Extended Offset Bracket

Used with the LG-150, LG-250, LG-350 and LG-350-AC for mounting on aerial or messengers.

Ordering Information

DESCRIPTION	AFL NO.
Universal Aerial Bracket for LG-150/LG-250/LG-350/LG-350-AC	FC000006
Extended Offset Bracket	FC000208

continued
→

LightGuard® Sealed Splice Closure Accessories (cont.)



Strand Mount Hanger Bracket for LG-350XL

Used with the LG-350XL.

Ordering Information

DESCRIPTION	AFL NO.
Strand Mount Hanger Bracket – For use with LG-350XL	912215-00-00

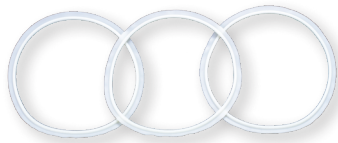


Cable Ground Kits

Used with the LG-150, LG-250 and LG-350.

Ordering Information

DESCRIPTION	AFL NO.
Cable Grounding Kit – Includes harness and hose clamp. One kit needed per cable entry. For use with LG-150/250/350.	FC000003
Cable Grounding Harness Kit – Includes (4) 8" ground harnesses constructed of #6 AWG conductor	FC000024
Cable Grounding Kit (pack of 5) – Includes harness and hose clamp. For use with LG-150/250/350.	FC000040

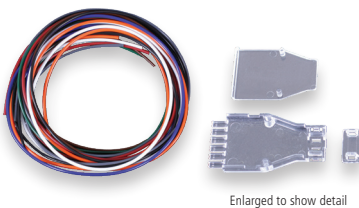


O-Ring Replacement Kits

Used with the LG-150, LG-250, LG-350 and LG-350XL.

Ordering Information

DESCRIPTION	AFL NO.
O-Ring Replacement Kit – For use with LG-150/250	FC000004
O-Ring Replacement Kit – For use with LG-300XL	FC000016
O-Ring Replacement Kit – For use with LG-350.	912231-00-00



1x6 Cable Router Kit

Used with the LG-150, LG-250, LG-350 and LG-350-AC.

Ordering Information

DESCRIPTION	AFL NO.
1X6 Cable Router Kit	FC000070