

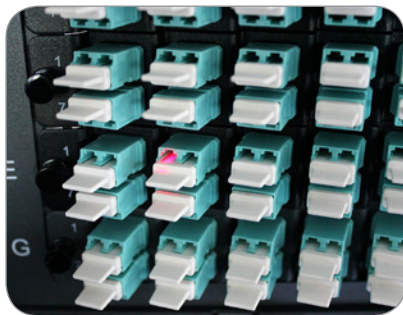


HD MTP® Range

AFL's HD (high density) range of MTP enclosures and cassettes offer 96F (48LCD) capacity in 1RU. The 4 cassette design is ideal for Fabric A/Fabric B type networks. Ideally suited for environments requiring a balance between density, labelling and patching access.

Enclosures to suit the HD range are available in both sliding and fixed tray designs. These enclosures are suited to racks with a minimum depth of 450 mm.

The HDS sliding enclosure features a partly enclosed 1RU and 3RU design with hinged cable tray. The HDT fixed enclosure features an easy open access shallow depth design. This enclosure also features a removable rear mounting cable management bar. An optional front mount hinged cable tray can be fitted to the HDT enclosure.



All AFL LC Duplex cassettes feature finger friendly, VFL traceable dust-caps

Features and Benefits

- MTP Elite connectors flat and angled front cassette designs for patchcord management options
- High density design to minimise RU usage
- Mixed media design, supports copper, LC/SC and passive connectivity
- Colour coded cassette fronts and coloured LC adapters available for circuit ID options
- MTP adapter panels to suit 40/100 Gig architecture
- Low loss MTP Elite, low loss LC connectors and adapters to meet the low channel losses defined in ISO IEC 11801
- Fully assembled, video inspected and tested to AS/NZS ISO/IEC 14763.3 by AFL Australia

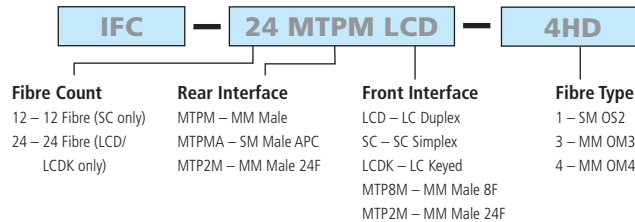
Densities and Options

- 1RU 96F/48LCD - 3RU 288F/144LCD
- HD MTP cassettes are supplied as standard in 24F OM3/OM4/SM configurations.
- The HD enclosure design also offers a range of additional media that can be integrated with MTP cassettes:
 - Copper category 6/6A
 - Fibre passive devices (e.g. WDM, circulators)
 - LC/SC coupler panels to suit pre-terminated cable assemblies

HD MTP® Range

Cassette Options

AFL's HD MTP Cassettes are fully assembled in Australia. Each unit is subjected to standards based inspection and testing methods to ensure consistent low loss performance.



Other options include coloured cassettes, coloured adapters and custom labelling.



IFC-24MTPMLCD-4HD
OM4 24 Fibre MTPM—
LC Duplex HD Cassette



IFC-24MTPMALCD-1HD
SM 24 Fibre MTPMA—
LC Duplex HD Cassette

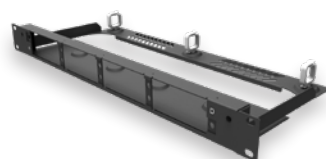
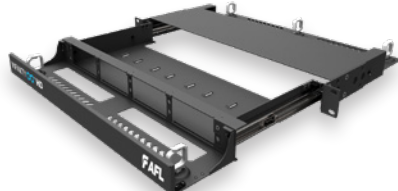


IFC-24MTPMLCDK-4HD
OM4 24 Fibre MTPM—
LC Duplex Keyed HD Cassette





Insertion Loss Performance

	AVG	MAX
MTP Elite		
Multimode OM3/OM4/OM5 @ 850 nm / 1300 nm (12/24F)	0.1 dB	0.35 dB
Singlemode OS2 @ 1310 nm / 1550 nm (12F)	0.1 dB	0.35 dB
MTP		
Singlemode OS2 @ 1310 nm / 1550 nm (24F)	0.25 dB	0.75 dB
LC/SC		
Multimode OM3/OM4/OM5 @ 850 nm / 1300 nm	0.1 dB	0.2 dB
Singlemode OS2 @ 1310 nm / 1550 nm	0.1 dB	0.2 dB

Enclosure Options

OPTIONS		
FRE-1RU-MOD-HDT	1RU 4 port fixed tray – suits 4 cassettes	
FRE-1RU-MOD-HDS	1RU 4 port sliding tray – suits 4 cassettes Includes front hinged cable cover	

HD MTP® Range

ACCESSORIES		
FRE-MTP04HD-FL-4AQ/BK	4 port MTP adapter panel – aqua or blue adapters	
FRE-LCD12-AQ/BU-HD	12 Port 24 fibre LC Duplex adapter panel – aqua or blue adapters	
FRE-KMJ-FL1/6-HD6	6 Port Keystone RJ45 panel (available in cat 6, 6A & pre-terminated)	
FRE-BLANK-HD	Blanking panel for unused ports	
FRE-1RU-CTRAY-HG	Hinged front mount cable cover – to suit 'MOD-HDT' style trays	