



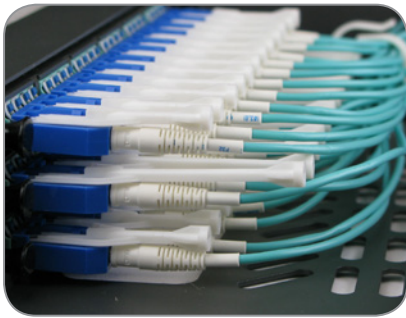
XHD MTP® Range

AFL's XHD (Extra High Density) range of MTP enclosures and cassettes offer 144F (72LCD) capacity in 1RU. The 6 cassette design is density optimised and suited for environments with limited RU space.

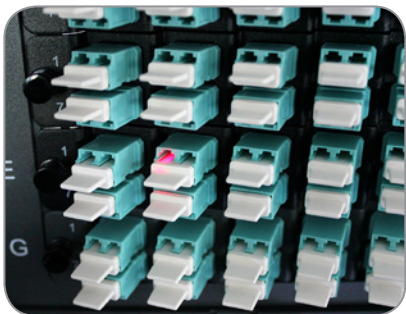
Enclosures to suit the XHD range are available in both sliding and fixed tray designs. The XHD range offers excellent high density finger access and patching accessibility.

- XHDFS offers a sliding flat fronted cassette design
- XHDT offers a shallow depth fixed flat fronted cassette design

All enclosures feature a removable rear mounting cable management bar. Hinged cable trays are supplied as standard with all sliding XHD enclosures and optional on the XHDT enclosure.



Both short and long tab LC uniboot patch leads allow maximum access to the patching environment



All AFL LC cassettes feature finger friendly, VFL traceable dust-caps

Features and Benefits

- Extra high density design to minimise RU usage
- Both sliding and fixed enclosure designs to suit different rack environments
- MTP adapter panels to suit 40/100 Gig architecture
- Low loss MTP Elite, low loss LC connectors and adapters to meet the Channel losses as defined in ISO IEC 11801
- Fully assembled, video inspected and tested to AS/ NZS ISO/IEC 14763.3 by AFL Australia
- Hinged cable tray with wiring documentation supplied as standard on XHDS

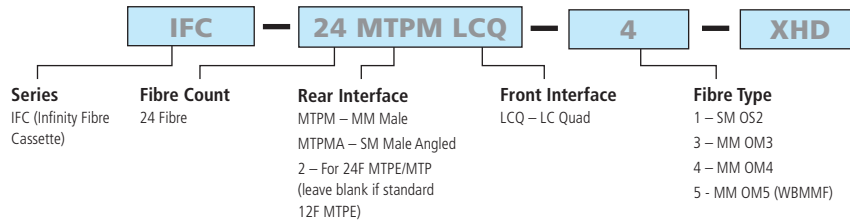
Densities and Options

- 1RU XHDFS, XHDT – 144F LC/576F MTP
- XHD MTP cassettes – 24F (2 x 12F MTP Elite) OM3/OM4/OM5
- XHD MTP cassettes – 24F (1 x 24F MM MTP Elite) OM3/OM4/OM5
- XHD MTP cassettes – 24F (1 x 24F SM MTP) OS2

XHD MTP® Range

Cassette Options

AFL's XHD MTP Cassettes are fully assembled in Australia. Each cassette is inspected to IEC inspection criteria and tested to ISO/IEC AS/NZS testing criteria.



Other options include coloured cassettes, coloured adapters and custom labelling.



IFC-24MTPMLCQ-4XHD
OM4 24 Fibre MTPM – LC Quad XHD Cassette



IFC-24MTPMALCQ-1XHD
SM 24 Fibre MTPMA – LC Quad XHD Cassette





IFC-24MTP2MLCQ-4XHD
OM4 24 Fibre MTPM – LC Quad XHD Cassette

Insertion Loss Performance

	AVG	MAX
MTP Elite		
Multimode OM3/OM4/OM5 @ 850 nm / 1300 nm (12/24F)	0.1 dB	0.35 dB
Singlemode OS2 @ 1310 nm / 1550 nm (12F)	0.1 dB	0.35 dB
MTP		
Singlemode OS2 @ 1310 nm / 1550 nm (24F)	0.25 dB	0.75 dB
LC/SC		
Multimode OM3/OM4/OM5 @ 850 nm / 1300 nm	0.1 dB	0.2 dB
Singlemode OS2 @ 1310 nm / 1550 nm	0.1 dB	0.2 dB

Enclosure Options

PART NUMBER	DESCRIPTION	
FRE-1RU-MOD-XHDT	1RU 6 aperture fixed tray with removable rear cable looming bar. 200 mm depth	
FRE-1RU-MOD-XHDFS	1RU 6 aperture flat front tray with hinged front cover and removable rear cable looming bar and cover. 290 mm depth (390 mm with front mount hinged cover)	

XHD MTP® Range

Accessories

PART NUMBER	DESCRIPTION	
IFC-MTP08XHD-FL-BK	8 port MTP adapter panel, black adapters	
IFC-MTP08XHD-FL-AQ	8 port MTP adapter panel, aqua adapters	
FRE-BLANK-XHD	Blanking panel for unused ports	
FRE-1RU-CTRAY-HG	Hinged front mount cable cover – optional to suit 'MOD-XHDT' style trays	
FRE-CTRAY-1-CLP	Alternative L/R 1RU front cable tray raised looming clip kit with retention arms	
FRE-CTRAY-1-PBL/R-K	Alternative L/R 1RU front cable tray patchcord holder kit	

