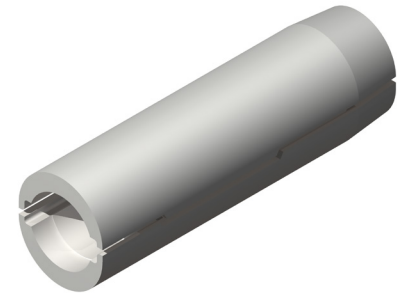
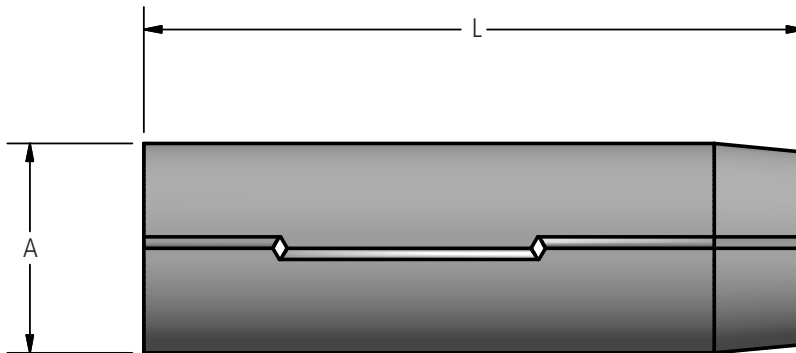


DOSSERT®

Types ML-R2, ML-P2 Limiter Shell for Use with MICON Limiter Assembly Types ML-R123, ML-P123, and ML-PL123



A composition molded shell consisting of two symmetrical halves with interlocking fingers. Internal cavities and heat confining barriers permit fusible section of MICON limiter to clear circuit without damage to surrounding insulation. Two shells constitute a pair as illustrated and defined by pairs in catalog numbers. Shells may be ordered independently by pairs for replacement.



Ordering Information

CATALOG NUMBER		CABLE RANGE	DIMENSIONS IN INCHES	
FOR RUBBER INSULATED CABLE	FOR PAPER* INSULATED CABLE		L	A**
ML21-R2	ML21-P2	4/0 STR	5 15/32	1 17/32
ML25-R2	ML25-P2	250 MCM	5 15/32	1 17/32
ML30-R2	ML40-P2	300-400 MCM	5 15/16	1 21/32
ML40-R2	ML40-P2	300-400 MCM	5 15/16	1 21/32
ML50-R2	ML50-P2	500 MCM	7 1/16	1 13/16
ML75-R2	ML75-P2	750 MCM	7 5/16	2 3/32

* For use with regular or long MICON limiter types ML-P3 and ML-PL3.

** Diameter