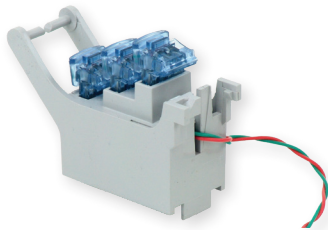
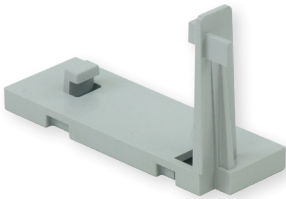


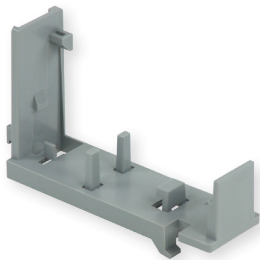
1-JC-1 Customer Bridge Module



1-CC-1 Bunch Block Module



"S" Footprint Adapter



PTD Adapter

IDC Line Modules for Network Interface Devices

Gel-filled Insulation Displacement Connector (IDC) line modules build on AFL's tradition of providing the most versatile selection of line modules. Based on the standard "K" footprint, IDC line modules provide the extra protection for connections in the most demanding conditions.

Features

- Field upgradeable
- Standard "K" footprint for use in SNI-4300, SNI-4600, SNI-4600XL, ML-6, and SNI-1600
- Adapter DM000484 available for "S" footprint, SNI-730, SNI-760, and SNI-2900
- Self contained; simply press in place
- Available with half ringers and RFI filters
- UL® listed for AFL systems and closures

Specifications

PARAMETER	VALUE
Contact Construction	50 micro inches hard gold / 100 micro inches nickel plated phosphor bronze
Contact Force	Minimum 100 grams
Temperature Cycling with Humidity	30 day cycling from 40-120°F (4.44-48.88°C) with 90% RH
Sealed Line Module Immersion (Flooded Conditions)	RJ-11 jack immersed in a solution of 1% weight sodium chloride (NaCl) and distilled deionized water, placed at a depth of 12 inches, or at a temperature of 77 °F for a period of three days. A bias of -48 VDC was applied between tip and ring of the jack during immersion.

Standard Configurations

MODEL NO.	AFL NO.
1-JC-1, Customer Bridge Module	DM000594
1-CC-1, Bunch Block Module	DM000600
Adapter for "S" footprint NIDs (SNI-730, SNI-760, SNI-760XL & SNI-2900)	DM000484
Adapter for PTD NIDSE	DM000717