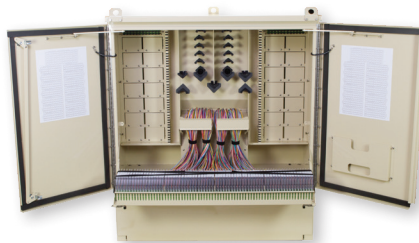


## IDEAA® (Integrated Distribution Enabling Access Apparatus)



288 Fiber (Closed)



864 Fiber (Open)

### IDEAA Exterior Distribution Cabinet

The IDEAA Exterior Distribution Cabinet (EDC) provides a convenient modular approach to centralized fiber distribution. All sizes of the EDC utilize the IDEAA splitter module to enable versatility across the platform. The EDC utilizes innovative jumper routing to enable efficient fiber management utilizing equal length pigtails for the entire cabinet.

#### Features

- Modular distribution platform allows for incremental deployment costs and immediate cost savings
- Small size is unobtrusive in residential deployments
- Enhanced fiber management provides simplified routing and termination
- Dual-door entry allows easy access to distribution and fiber management fields
- Flexible pad and pole mounting options allow for deployment in convenient locations
- Expandable feeder cables allow for point-to-point distribution (cross-connect)

#### Specifications

THROUGH PORTS	HEIGHT	WIDTH	DEPTH	SPLITTER CAPACITY	INPUT/PASS
Up to 288 Fiber	38"	20"	20"	9	24
432 Fiber	46"	20"	20"	14-15	24 (48 available)
576 and 864	48"	42.5"	20"	28	144

#### Ordering Information

DESCRIPTION	AFL NO.
<b>PAD MOUNT WITH SKIRT AND 100 FOOT TAILS</b>	
IDEAA Exterior Distribution Cabinet - 72 Pad, 1 x 72 Fiber Distribution Cable (Loose Tube), 1 x 24 Fiber Input Cable (Loose Tube)	EA000307
IDEAA Exterior Distribution Cabinet - 144 Pad, 1 x 144 Fiber Distribution Cable (Loose Tube), 1 x 24 Fiber Input Cable (Loose Tube)	EA000304
IDEAA Exterior Distribution Cabinet - 216 Pad, 1 x 216 Fiber Distribution Cable (Loose Tube), 1 x 24 Fiber Input Cable (Loose Tube)	EA000305
IDEAA Exterior Distribution Cabinet - 288 Pad, 1 x 288 Fiber Distribution Cable (Loose Tube), 1 x 24 Fiber Input Cable (Loose Tube)	EA000301
IDEAA Exterior Distribution Cabinet - 432 Pad, 2 x 216 Fiber Distribution Cable (Loose Tube), 1 x 24 Fiber Input Cable (Loose Tube)	EA000321
IDEAA Exterior Distribution Cabinet - 864 Pad, 2 x 432 Fiber Distribution Cable (Wrapping Tube Cable (WTC), with SpiderWeb Ribbon®), 1 x 144 Fiber Input Cable (Wrapping Tube Cable (WTC), with SpiderWeb Ribbon®)	EA000590

<b>POLE MOUNT WITH BRACKET AND 100 FOOT TAILS</b>	
IDEAA Exterior Distribution Cabinet - 144 Pole, 1 x 144 Fiber Distribution Cable (Loose Tube), 1 x 24 Fiber Input Cable (Loose Tube)	EA000314
IDEAA Exterior Distribution Cabinet - 288 Pole, 1 x 288 Fiber Distribution Cable (Loose Tube), 1 x 24 Fiber Input Cable (Loose Tube)	EA000302
IDEAA Exterior Distribution Cabinet - 432 Pole, 2 x 216 Fiber Distribution Cable (Loose Tube), 1 x 24 Fiber Input Cable (Loose Tube)	EA000322

#### Qualifications

GOVERNING BODY	STANDARD CODE
Telcordia	GR-3215



## Applications

- Direct Wall Mount
- Interior Wall Mount Enclosure / Pedestal
- Exterior Wall Mount Enclosure
- Exterior Distribution Enclosure / Pedestal
- Exterior Distribution Cabinet
- Splice Closure – Sealed
- Rack Mount Bracket

## Features

- SC and LC Module configurations can accommodate up to a 64 fiber distribution
- Modular design allows for highly flexible and scalable deployments
- Durable hardened plastic exterior provides a rugged encasement
- Single and multi-package modules available

## IDEAA®

### Integrated Distribution Enabling Access Apparatus

AFL's Integrated Distribution Enabling Access Apparatus (IDEAA) product family revolutionizes the way passive optical splitters are deployed in the network. Utilizing a small modular design and leveraging planar waveguide technology to yield an ultra low polarization dependent loss, low insertion loss, and high port uniformity, the IDEAA product possesses the flexibility to be used in a wide variety of applications. The IDEAA module provides a lower cost and more versatile alternative to preexisting PON architecture arrangements. Rather than being confined to a traditional "splitter-in-cabinet" design, the IDEAA product family allows service providers to employ PON architecture across all areas of the network.

The IDEAA module's unique design enables customers to utilize a revolutionary stand-alone mounting capability. In addition to conforming to a number of different applications, each IDEAA module can be mounted as an independent distribution point. This unit can be neatly secured to a wall or even placed on an existing rack or cabinet.

### IDEAA SC and LC Modules

The IDEAA SC and LC modules come equipped with an internal PLC device which is factory terminated and tested. An integrated hinge provides easy access to the SC or LC adapter interface while reducing space when mounted. The SC and LC modules use APC connectors to meet the strict back reflection requirements of the latest PON architectures. A wide variety of PLC splitter configurations are available. A dual 1x16 module is available with SC APC outputs and LC APC inputs. Two SC APC to LC APC jumpers are included to connect to the EDC SC APC input ports.

### Direct Wall Mount Capability

The IDEAA product can easily mount to an interior wall without needing any additional enclosures. Simply use the integrated hinge plate to install the module directly to a wall. The module contains port identification for each output fiber.

### Specifications

PARAMETER	VALUE				
	1 X 4	1 X 8	1 X 16	1 X 32	1 X 64
Wavelength Range (nm)	1260 - 1650				
Typical Insertion Loss (dB)	6.7	9.8	12.9	16.6	19.8
Max Insertion Loss (dB)	7.4	10.5	14	17.5	21
Max IL Uniformity (dB)	1	1	1.5	2	2.2
Return Loss (dB)	≥55				
Directivity (dB)	≥55				
Max PDL (dB)	0.3				

### Ordering Information

DESCRIPTION	AFL NO.
IDEAA MODULE, SC, 1X32	EA000102
IDEAA MODULE, SC OUTPUT, LC INPUT, DUAL 1x16	EA000583
IDEAA MODULE, SC, 1X16	EA000103
IDEAA MODULE, SC, 1X8	EA000104
IDEAA MODULE, SC, 1X4	EA000105
IDEAA MODULE, LC, 2X32	EA000547

### Qualifications

GOVERNING BODY	STANDARD CODE
Telcordia	GR-1209, GR-1221

## IDEAA® (Integrated Distribution Enabling Access Apparatus)



### LL-400sx Optical Splicing/Distribution Enclosure

The LightLink (LL) 400sx Fiber Optic Splicing and Distribution Enclosure provides for organizing, splicing, and interconnecting fibers in FTTx, broadband, distribution and building entrance applications. Each LL-400sx enclosure features a scratch resistant powder coated aluminum base and a fully gasketed cover. A unique self-sizing grommet design allows for express and preterminated cable installation. The LL-400sx is a butt-style enclosure equipped with four independent cable entry/exit grommets, used for outdoor pedestal or indoor building entrance and riser splicing applications. The unit supports a maximum storage and splicing capacity of up to 192 single or 576 mass-fused fibers.

The LL-400sx can also mount up to two LGX118® adapter plates (splicing capacity limited to 144 single fusion and 432 mass fusion splices when adapter plates are installed).

#### Features

- Independent cable strain relief system
- Cable entry/exit grommet seals
- Removable Hinged Front Cover
- Fiber routing system
- Splice tray support system
- 192 single fusion splices
- 576 mass fusion splices
- Grounding hardware kit included
- 1 1x32 IDEAA Module with LGX Mount Bracket

#### Specifications

PARAMETER	VALUE
Material	Chassis – aluminum
Coatings	Electrostatically applied, powder coat
Color	Antique white
Dimensions (H x W x D) in. (cm)	23.9 x 9.5 x 5.0 (58.4 x 24.13 x 12.7)
Weight lbs (kg)	5.0 (2.3)

#### Ordering Information

DESCRIPTION	AFL NO.
LL-400sx	EA000370
LL-4848 Mass Fusion Splice Tray	911437-00-02
LL-2448 Universal Splice Tray	911289-00-02
LL-2448-48S Single Fusion Splice Tray	FA000045
LL-2400 Single Fusion Splice Tray	91710-06
Channel MAH1010 Pedestal	FM000776
Channel MAH1212 Pedestal	FM000655
IDEAA® Module LGX Mount Bracket	EA000061
IDEAA Pigtail Kit	EA000166
IDEAA SC/APC 1x32 Splitter Module	EA000102
IDEAA SC/APC 1x16 Splitter Module	EA000103
IDEAA SC/APC 1x8 Splitter Module	EA000104
IDEAA SC/APC 1x4 Splitter Module	EA000105

#### Applications

- OSP Splicing
- MDU Splicing
- FTTx Distribution



### IDEAA® Rack Mount Bracket

The IDEAA RMB allows attachment of one (1) IDEAA module to easily mount to industry standard LGX® 118 fiber management rack panels. Simple push-pull pins allow the module to be easily installed and removed.

#### Features

- Metal plate with push/pull pins
- Powder coated black
- LGX compatible

#### Capacity

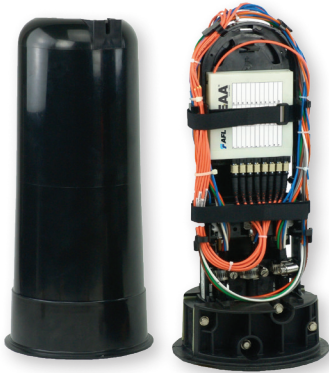
IDEAA MODULE	1RU PANEL	2RU PANEL	3RU PANEL	4RU PANEL
# of 118 Positions	3	6	9	12
1x32 SC	N/A	N/A	3	4
1x16 SC	N/A	3	3	6
1x8 and 1x4 SC	3	6	9	12
3x96 MPO	3	6	9	12

#### Ordering Information

DESCRIPTION	AFL NO.
Rack-mount Panel LGX®118 Bracket for SC/APC IDEAA Module	EA000654
Rack-mount Panel LGX®118 Bracket for MPO IDEAA Module	EA000655

## IDEAA® (Integrated Distribution Enabling Access Apparatus)

Fiber Management



### IDEAA® Splice Closure—Sealed

The IDEAA SCS is designed to mount either in buried or aerial applications. The splice closure comes equipped to install one (1) IDEAA module along with a tray to splice all input and output fiber cables. The splice closure is designed to handle multiple fiber cables.

#### Features

- Less than 20" overall length; ideal for small hand-holes
- Installation and re-entry using common hand tools
- Fully sealed to protect fiber and splices
- Fully kitted with all parts necessary for installation

#### Specifications

PARAMETER	VALUE
Splice Capacity (Max.) – single	36
Number of Splice Trays (Max.) – single	1
Cable Entrance Configuration	Butt
Cable Ports	5 Ports (14 cables total using flat-drop grommets)
Cable Sizes (O.D.)	Express Side – 2 (0.4"–1.0") Drop Side – 12 (0.31" flat-drop or 0.25" round)
Dimensions (L x D) – inches (cm)	19.8" x 10.0" (50.3 x 25.4)
Weight - lbs. (kg)	12 (5.44)

#### Ordering Information

DESCRIPTION	AFL NO.
IDEAA SPLICE CLOSURE	EA000076
IDEAA Splice Closure Pigtail Kit	EA000168