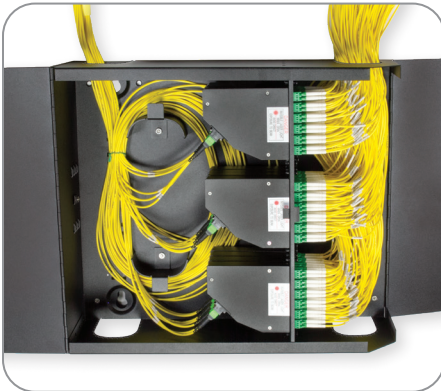




## Wall Mount Interconnect Enclosure (WME) with 12 LGX® Mounting Positions

AFL's wall mount interconnect enclosure (WME12) provides a convenient convergence point for interconnecting and/or splicing in wall mount applications. Provisioned for up to 12 LGX-compatible optical modules, the enclosure features a well-engineered solution for fiber and cable management on both the ingress and egress openings of the enclosure. Robust steel construction ensures the highest level of protection for sensitive components while integrated roll-formed hinges eliminate possible fiber pinch points while deploying or servicing components within. The WME12 features discrete access doors for provider and customer access which are lockable by key.



### Features

- Fits comfortably into new and existing interconnect, cross-connect and co-location environments
- U-shaped cable entry
- Modular design fully compatible with Poli-MOD® products and Xpress® Fiber Management (XFM®) optical cassettes
- Dual doors with separate locking options for flexibility and security
- LGX 118 compatible

### Applications

- Co-Location sites
- Customer premise
- Hub/OTN sites
- Telecommunication closets
- Campus/enterprise environments

### Specifications

- Solid steel construction
- Powder coat black textured finish
- Top or bottom cable entry with dust resistant grommets
- Keyed locking/security system
- Up to 288 fiber density
- 12 LGX mounting positions
- Physical dimensions: 16.75"H x 20.0"W x 6.82"D

### Ordering Information

DESCRIPTION	AFL NO.
WME12 Empty	WME12E

LGX is a registered trademark of Furukawa Electric North America, Inc.