

FOCIS WiFi[®] Fiber Optic Connector Inspection System



Features

- Trim, lightweight, ergonomic and highly productive tool
- App-based automatic and manual focus; auto-centering after image capture
- One button workflow using rapid LED feedback on probe
- Multi-color LED on probe for fast pass/fail user inspection feedback
- Pairs with an iOS or Android smart device or the aeRos[®] cloud-based workflow management platform
- IEC, IPC, AT&T and user-defined pass/fail analysis when paired with a smart device
- Wide range of adapter tips including MPO/MTP multi-fiber connectors and bulkheads
- Over 8 hours operation with rechargeable Li-Ion battery

Applications

- Inspection of connectors on patch cords or in bulkhead adapters
- Installation, troubleshooting and maintenance of fiber network
- Inspection of multi-fiber connectors including MPO16 and MXC[®]
- Critical fiber infrastructure performance assurance
- Verification of proper connector cleaning methods of procedure

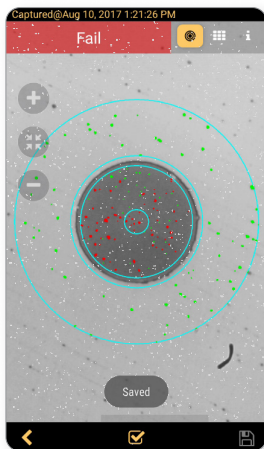
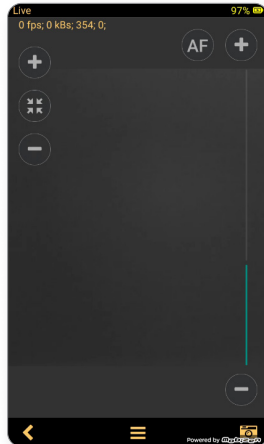
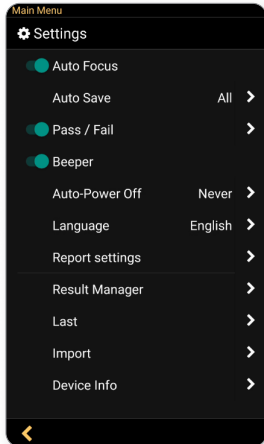
FOCIS WiFi is an ergonomic Fiber Optic Connector Inspection System that, when paired with an iOS or Android smart device, provides fast and accurate IEC/IPC/AT&T compliant and user-defined pass/fail end-face cleanliness analysis. Free of charge iOS and Android companion apps support a comprehensive and user-friendly feature set.

Pass/fail results in seconds: With the press of a single button, FOCIS WiFi auto-focuses, captures, centers and analyzes the end-face image to industry standard IEC 61300-3-35 (2015), IPC-8497-1, AT&T TP-76461 and user-defined criteria.

Untethered operation: App-based report generator with results/reports transferable to the aeRos cloud. With rechargeable battery and convenient pass/fail LED feedback, FOCIS WiFi can be used semi-independently.

Wide range of adapter tips: Interchangeable adapter tips support single and multi-fiber connector inspection for a wide range of patch cords and bulkhead-mounted connectors having either PC/UPC or APC polished end-faces.

FOCIS WiFi[®] Fiber Optic Connector Inspection System



Fail

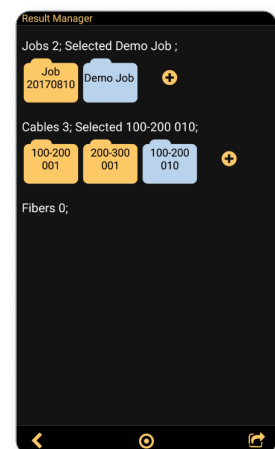
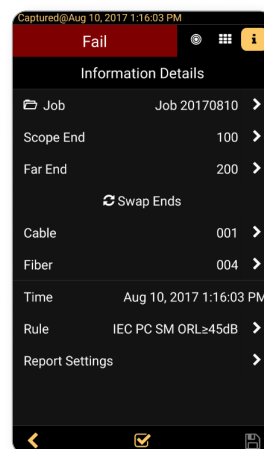
IEC PC SM ORL \geq 45dB

Zone		
A	0-25	>0 μ m: 0
B	25-115	>3 μ m: 0
D	135-250	>10 μ m: 0

Smart Device Apps: FOCIS WiFi

Features

- Live image video streaming
- Auto-focus and auto centering
- IEC, IPC, industry standard, and user-defined inspection rules
- Pinch-to-zoom fiber end-face images
- Report generation
- Multi-language Graphical User Interface (GUI)
- Day/time stamped job saving



FOCIS WiFi2® Fiber Optic Connector Inspection System

Specifications^a

OPTICAL PERFORMANCE	
Field of View (FOV) ^b	Live and Captured: 612 x 460 µm;
Manual Detection Capability (minimum)	0.25 µm
Auto Analysis Resolution	<1.0 µm
Stored ^c Image Size	2592 x 1944 (5M) pixels
End-face Illumination	Coaxial blue LED 476 nm
Maximum No Damage Live Fiber Power Level	+20 dBm (Image cannot be viewed if fiber is live)
OPERATING FEATURES	
WiFi Characteristics	IEEE 802.11bng
Focus	Auto-focus (≤3 sec) and manual focus
Centering	Auto-centering (<1 sec)
Button Functionality	Power On/Off (>3 secs); Capture/Analysis/Auto-save/Live
Main LED Functionality	Blue = Power On, Green = Pass, Red = Fail, White = No Fiber
Magnification ^b	Variable from 80X to 700X, in Live and Capture modes
Applications Compatibility	Android ≥4.0.3, iOS ≥8.1
Image Capture with Pass/Fail Analysis ^c	IEC 61300-3-35 (2015), AT&T TP-76461, IPC-8497-1, user-set criteria
Image File Format	JPEG, GIF
Image & Pass/Fail Results Storage ^c	Yes
File Storage Capacity ^c	Unlimited
Result Manager ^c	Storage, rename, delete, transfer
Reporting ^c	Built-in fillable PDF reporter
Supported Languages ^c	English, French, German, Japanese, Korean, Russian, Spanish
PHYSICAL AND POWER CHARACTERISTICS	
Battery Type	Li-Ion, non-replaceable by user
Maximum Charger Current Draw	1.2A, battery charge current + device consumption current
Operating Time (typical)	60 hours ^d ; 8 hours continuous
Recharge Time	≤4 hours
Low-Battery Warning	Viewed on smart device
Charging LED Status; viewed on smart device	Red = Charging, Green = Fully Charged, Blinking Red/Green = Battery Fault
Power Save Features (Controlled by App)	Probe Auto-Off – disabled, 5, 10, 30, 60 minutes; Probe WiFi Not Connected – 5 minutes
AC Charger Voltage, Frequency, Current	100-240VAC, 50/60Hz, 5VDC, 2A
Charger Jack	0.9 x 3.2 mm barrel, center (tip) positive
Size (Max Diameter x Length)	Ø 40 x 226 mm (Ø 1.6 x 8.9 in)
Weight	150 g (5.3 oz)
ENVIRONMENTAL CHARACTERISTICS	
Operating Temperature	0 to +50 °C; 95% RH, non-condensing
Storage Temperature	-40 to +70 °C; 95% RH, non-condensing

Notes:

- a. All specifications valid at 23°C ±2°C (73.4°F ±3.6°F).
- b. Viewed on Smart Device.
- c. In iOS & Android Apps.
- d. Operating conditions: 60 tests in 20 minutes, then auto-off; Repeat each hour

Ordering Information

DESCRIPTION	AFL NO.
FOCIS WiFi2 Kit, soft carry case, AC charger, with NO tips or One-Click cleaner	FOCIS-WIFI2-N
FOCIS WiFi2 Kit, soft carry case, AC charger, user-selected: (2) UPC ferrule & bulkhead adapter tips and (1) One-Click cleaner	FOCIS-WIFI2-U
FOCIS WiFi2 Kit, FOCIS WiFi2, soft carry case, AC charger, user-selected: (2) APC ferrule & bulkhead adapter tips and (1) One-Click cleaner	FOCIS-WIFI2-A
FOCIS WiFi2 Kit, soft carry case, AC charger, user-selected: (2) UPC and (2) APC ferrule & bulkhead adapter tips and (1) One-Click cleaner	FOCIS-WIFI2-UA

FOCIS WiFi2® Fiber Optic Connector Inspection System

Recommended Products



FS300



FS200

FlexScan® FS300 (quad) and FS200 (single-mode) OTDRs

- SmartAuto® 1-button automated testing for fast results
- LinkMap® color-coded icons for easy troubleshooting
- Flexpress® mode (FS200) completes OTDR test in <5 seconds!
- Integrated Source, Power Meter and VFL



OFI-BIPM Optical Fiber Identifier

- World class signal sensitivity
- Trigger lock, positive stop for optimum detection
- Integrated optical power meter option

Qualifications

CATEGORY	REGULATION/STANDARD	QUALIFICATION
CE Marking	EU	Compliant to relevant EU Directives on health, safety, and environmental protection, and certified with CE marking
Safety /EMC /EMI	IEC	Compliant to IEC 61010-1 for safety requirements for electrical equipment
	EN	Compliant to EN 61010-1 for safety requirements for electrical equipment
	IEC	Compliant to IEC 61326-1 for EMC requirements for electrical equipment
	EN	Compliant to EN 61326-1 for EMC requirements for electrical equipment
	EN	Compliant to EN 55011 for EMC requirements for industrial, scientific and medical equipment
RoHS	FCC	Compliant to code of federal regulations FCC 47 CFR 15 on unlicensed transmissions
Test Method	EU	Compliant to EU regulations Directive 2011/65/EU (RoHS 2) and Directive 2015/863 (RoHS 3)
	IEC	Compliant to IEC 61300-3-35 for visual inspection of fiber optic connectors and fiber-stub transceivers
	IPC	Compliant to IPC-8497-1 for cleaning methods and contamination assessment for optical assembly

Contact Sales@AFLglobal.com to schedule a demonstration or learn how to buy.

Visit www.AFLglobal.com/Test to learn more about FOCIS WiFi2

International Sales and Service Contact Information available at www.AFLglobal.com/Test/Contacts