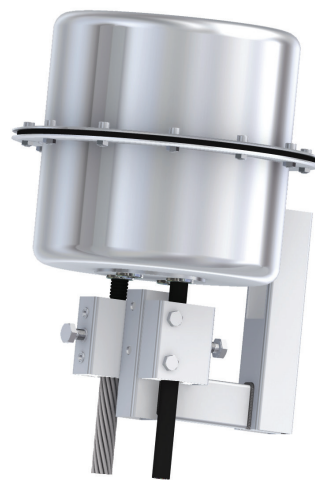


OPGW STAINLESS STEEL DOME CLOSURE



CONFIGURATION

CABLE ENTRIES		4
OPGW/ OPTICAL MODULE, DIAMETER	mm	9-20 / 2.5-3.5 (stranded) 6.5 (central)
STEEL TUBE PER OPGW		3
APPROACH CABLE/ ADSS, DIAMETER	mm	9-15.5 / 9-15.5
NUMBER OR SPLICES		192 (extendable)

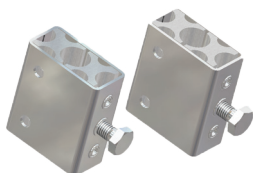
CHARACTERISTICS

TOTAL HEIGHT	mm	353
WIDTH, MAX.	mm	290.5
WEIGHT	kg	7.0

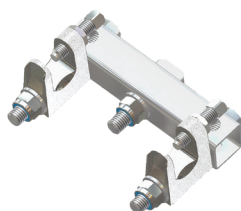
TOWER FIXING

UNIVERSAL CLAMP	mm	9-20 (cable diameter)
LATTICE TOWER CLAMP	mm	max. 23 (clamping range)
CIRCULAR POLE CLAMP	mm	max. 600

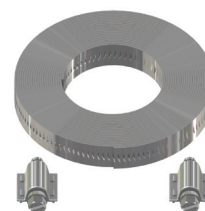
KEY COMPONENTS



UNIVERSAL CLAMP
20113064



LATTICE TOWER CLAMP
10115814



CIRCULAR POLE CLAMP
10115813

IDENTIFICATION

OJB	-	1	-	OOEB	-	C	-	048
-----	---	---	---	------	---	---	---	-----

O - Entry, OPGW
E - Entry, approach
cable / ADSS
B - Unused entry

C - Crimp splice
protection
H - Heat shrinkable
splice protection

Maximum number of
splices (steps: 48)