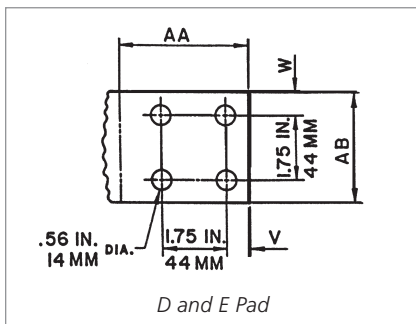
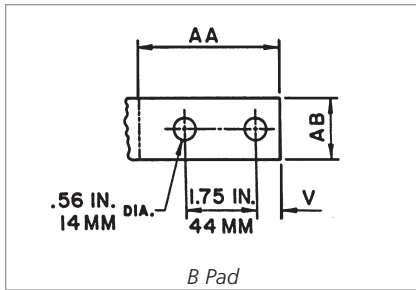


NEMA Standard Pad Sizes

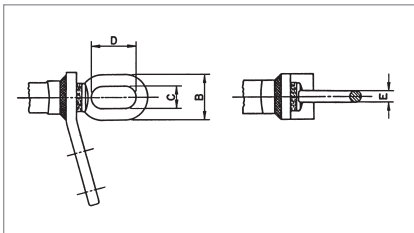


DIGITS OF CATALOG NUMBER	PAD LETTER	DIMENSIONS								PAD THICKNESS DEAD END TONGUE	
		V		W		AA		AB		IN	MM
		IN	MM	IN	MM	IN	MM	IN	MM		
07	B	0.62	16	—	—	3.50	89	1.50	38	0.50	13
08	B	0.62	16	—	—	3.50	89	1.70	43	0.50	13
09	B	0.62	16	—	—	3.50	89	1.92	49	0.50	13
10	B	0.62	16	—	—	3.50	89	2.18	55	0.50	13
11-16	D	0.62	16	0.62	16	3.50	89	3.00	76	0.62	16
17-20	E	1.12	29	1.12	29	4.00	102	4.00	102	0.75	19

Notes:

1. If the catalog number has 'EHV' suffix, pad will be furnished with rounded corners.
2. 15° terminals and dead end tongues are finished on both sides.

Steel Eye and Clevis Dimensions – Non-Adjustable Steel Eye

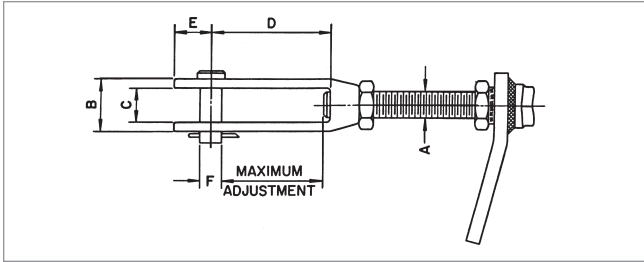


DIGITS OF CATALOG NUMBER	DIMENSIONS							
	B		C		D		E	
	IN	MM	IN	MM	IN	MM	IN	MM
07 and 08	1.82	46	1.00	25	2.00	51	0.41	10
09 and 10	2.04	52	1.00	25	2.00	51	0.52	13
11 and 12	2.24	57	1.00	25	2.00	51	0.62	18
13-15	2.80	71	1.24	31	2.50	64	0.78	20
16-18	3.12	79	1.24	31	2.50	64	0.94	24
19 and 20	3.70	94	1.50	38	3.00	76	1.10	28

Bolt Sizes and Recommended Torque

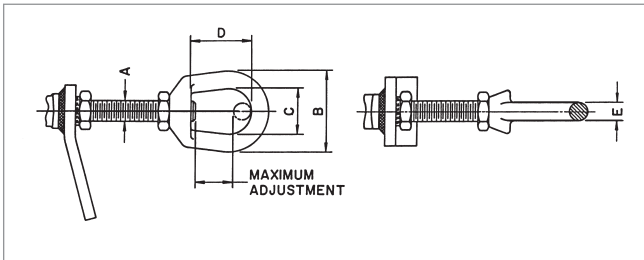
15° TERMINAL SIZE	BOLT SIZE	RECOMMENDED TORQUE: LB-FT	RECOMMENDED TORQUE: N-M
TF07, TF08, TF09	1/2" -13UNC x 1.75"	25	34
TF10, TF11, TF12, TF13	1/2" -13UNC x 2.00"	25	34
TF14, TF15, TF16, TF16, TF17	1/2" -13UNC x 2.25"	25	34
TF18, TF19, TF20	1/2" -13UNC x 2.50"	25	34

Steel Eye and Clevis Dimensions – Adjustable Steel Clevis



DIGITS OF CATALOG NUMBER	DIMENSIONS										MAXIMUM ADJUSTMENT		
	A	B		C		D		E		F		IN	MM
		IN	MM	IN	MM	IN	MM	IN	MM	IN	MM		
07	5/8-11	1.56	40	0.75	19	4.00	102	1.25	32	0.62	16	3.38	86
08	3/4-10	1.69	43	0.88	22	4.00	102	1.25	32	0.62	16	3.38	86
9 and 10	7/8-9	1.81	46	1.00	25	4.00	102	1.25	32	0.75	19	3.38	86
11 and 12	1-8	2.56	65	1.38	35	5.00	127	1.50	38	0.88	22	4.25	108
13-15	1 1/4-7	2.56	65	1.38	35	5.00	127	1.50	38	1.00	25	4.25	108
16-18	1 1/2-6	2.81	71	1.62	41	6.00	152	1.75	44	1.12	28	5.12	130
19 and 20	1 3/4-5	3.19	81	2.00	51	6.00	152	2.00	51	1.25	32	5.12	130

Steel Eye and Clevis Dimensions – Adjustable Steel Eye



DIGITS OF CATALOG NUMBER	DIMENSIONS									MAXIMUM ADJUSTMENT	
	A	B		C		D		E		IN	MM
		IN	MM	IN	MM	IN	MM	IN	MM		
07	5/8-11	2.50	64	1.50	38	2.00	51	0.50	13	1.28	33
08	3/4-10	3.00	76	1.75	44	2.38	60	0.62	16	1.53	39
09 and 10	7/8-9	3.50	89	2.00	51	2.62	67	0.75	19	1.63	41
11 and 12	1-8	4.00	102	2.25	57	3.06	78	0.88	22	1.92	49
13-15	1 1/4-7	4.50	114	2.50	64	3.50	89	1.00	25	2.23	57
16-18	1 1/2-6	5.62	143	3.12	79	4.00	102	1.25	32	2.45	62
19 and 20	1 3/4-5	5.62	143	3.12	79	4.00	102	1.25	32	2.17	55