



Fujikura 70S+ Core Alignment Fusion Splicer

The 70S+ is the world's most advanced core alignment fusion splicer available. Combining features such as automated wind cover and heater, the 70S+ is speed and work flow optimised. With a 7 second splice time and 14 second heat time making it the fastest available, all while delivering Fujikura's renowned low loss splice performance in a compact ultra-ruggedised design.

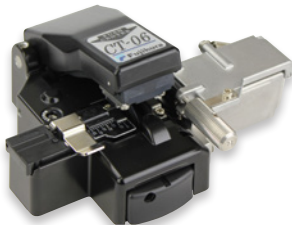


Features and Benefits

- Fully automated wind cover and heater operation
- FAST! 7 second splice time /14 second heat time
- Long-life battery provides 200 splice/heat cycles
- Extended electrode performance with 5000 splices per set
- Large, high visibility 4.73" colour screen
- 30" drop tested on all six sides
- Fibre holder and FUSEConnect® compatible
- On-board instructional videos
- Transit case with work table
- Bluetooth capability



FUJCT30A



FUJCT06A



Fujikura 70S+ Core Alignment Fusion Splicer

Technical Specifications

Applicable Type of Fibres	SM (ITU-T G.652 and G657), MM (ITU-T G.651), DS (ITU -T G.653), NZDS (ITU-T G.655)
Fibre Count	Single
Applicable Fibre Dimensions	Cladding diameter: 80 to 150 µm Coating diameter: 100 to 1000 µm
Cleaved Length	5 mm to 16 mm
Splicing Modes	Total 100 modes
Typical Splice Loss	0.02 dB with SM, 0.01 dB with MM, 0.04 dB with DS and 0.04 dB with NZDS (measured by cut-back method relevant to ITU-T and IEC standards)
Return Loss	>60 dB
Splicing Time	ULTRA FAST mode - 6 seconds, SM FAST mode - 7 seconds, SM AUTO mode - 10 seconds with SM fibre
Splice Loss Estimate	Available using dual camera, core alignment data
Attenuation Splice Function	Intentional high splice loss of 0.1 dB to 15 dB (0.1 dB step) can be made for an in-line fixed attenuator
Tube Heater/Heating Time	Built-in tube heater with 30 heating modes/Typical 14 sec with Fujikura FP-03
Applicable Protection Sleeve	60 mm, 40 mm and micro series
Storage of Splice Result	The last 2000 results to be stored in the internal memory
Tension Test	1.96 to 2.25 N
Operating Condition	0 to 5,000 m above sea level, 0 to 95% RH and -10 to 50°C and up to 15 m/s wind velocity, respectively
Storage Condition	0 to 95% RH (non dew), short term storage -40 to 80°C, long term storage with battery: -20 to 30°C
Dimensions	146 W × 159 D × 150 H (mm)
Weight	2.5 kg with AC adaptor, 2.7 kg with battery
Viewing Method and Display	Dual cameras with 4.73" colour LCD monitor
Fibre View and Magnification	X/Y (320X magnification), or both X and Y simultaneously (200X magnification)
Power Supply	Applicable voltage from 100 to 240 V AC or 10 to 15 V DC with ADC-18. 14.8 V DC with BTR-09
No. of Splice Cycles with Battery	Typical 200 cycles (splice/splice protector heat) with BTR-09
Electrode Life	5000 arc-discharges
Connectivity	USB 1.1 (Mini-B type) connector for PC communication. 6-pin Mini-DIN connector for HJS-02, HJS-03 or SH-8C power supply

Resistance Features

DESCRIPTION	DETAIL
Shock Resistance	76 cm (30inch), all 6 sides per GR-765-CORE
Dust Resistance	Exposure to dust (0.1 to 500 µm dia. Alumina Silicate) ¹ per TR-NWT-000264
Rain Resistance	R=10 mm/h for 10 min ¹ per JIS C 0034

1. Carried out in Fujikura labs in Japan. The shock resistance, dust resistance and rain resistance test do not guarantee that the product will not be damaged under these conditions.

Fujikura 70S+ Core Alignment Fusion Splicer

Splicer Packages

PART NUMBER	DESCRIPTION
FUJFSM70S-K1+	70S+ Core Alignment Splicer with CT30A cleaver kit
FUJFSM70S-K2+	70S+ Core Alignment Splicer with CT06A cleaver kit
FUJFSM70S-K3+	70S+ Core Alignment Splicer, no cleaver

All splicer kits include fusion splicer, cleaver and items listed below:

PART NUMBER	DESCRIPTION
FUJFSM-70SCLAMP	70S+ fibre clamp, 5-16 mm cleave length 250/900 µm (pair)
FUJFSM-ADC18	AC adapter, battery charger, DC inlet to suit 70S+, 70R+, 19S/R
FUJFSM-BTR09	Battery pack to suit 70S+, 70R+, 19S/R
FUJFSM-DCC18	FUJBTR-09 battery charge lead
FUJFSM-EL50/60S	Electrode set to suit 70S+, 70R+, 19S/R (1 fitted + 1 spare)
FUJFSM-70SCARRYCASE	Fujikura 70S+ lockable travel case with work tray

All splicer kits include safety goggles, sharps container, alcohol dispenser, 100 pk cotton tips, sleeve loader, electrode removal screwdriver, USB communications lead and instruction CD.

Accessories

PART NUMBER	DESCRIPTION
FUJFSM-EL50/60S	Electrode set to suit 70S+, 70R+, 19S/R
FUJFSM-BTR09	Battery pack to suit 70S+, 70R+, 19S/R
FUJFSM-DCC12	12 V cigarette lighter lead to suit 70S+, 70R+, 19S/R
FUJ-70SCLAMPB	Fibre clamp, 16mm cleave length, 900µm loose buffer
FUJFH-60-250	250 µm Fibre Holder Single Fibre 70S+, 70R+, 19S/R, CT30, CT06 / Hot jacket stripper (pair)
FUJFH-60-900	900 µm Fibre Holder Single Fibre 70S+, 70R+, 19S/R, CT30, CT06 / Hot jacket stripper (pair)
FUJFH-60-LT900	900 µm Loose Buffer Fibre Holder Single Fibre 70S+, 70R+, 19S/R, CT30, CT06 / Hot jacket stripper (pair)
HTST250/9/2-E	Ergonomic fibre stripper, three hole
HTST250-E	Ergonomic fibre stripper, 250 µm
HTSCKEV-E	Ergonomic wire and Kevlar cutting shears
IDE5163	Loose tube cable stripper
IDE5164	Stripping tool (6.4-14.3 mm)
HTST4.5/29	Round cable stripper (4.5-29 mm)
MEN712	Alcohol dispenser
SPLPROT-HS-xxxx	Single fibre splice protector available in 2.5 mm and 3 mm thickness, 45 mm and 62 mm lengths, 12 pk and 100 pk sizes
AFC-RACKMATE	RackMate sliding work tray
AFCKIT-CABLEPREP	Fibre cable preparation kit
AFCKIT-CABLEPREP-CK	Fibre and cable cleaning consumables kit
FUJFSM-EXTWAR5Y	Fujikura splicer extended care plan, 70, 19, 12, FSM-60 Series—5 Years