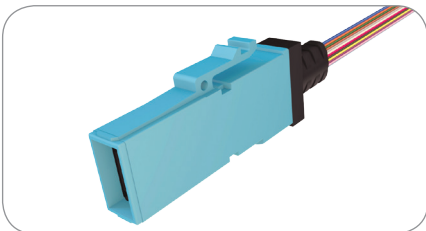
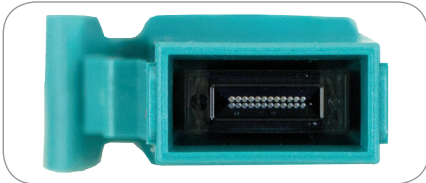


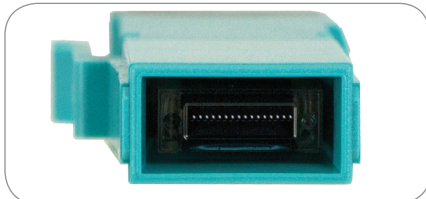
MXC Expanded Beam Connector Multi-row Assembly without Cap



MXC Expanded Beam Connector Assembly on Ribbon Cable



Close-up of Multi-row Assembly



Close-up of Single-row Assembly

MXC® Expanded Beam Connector Assemblies

AFL's expanded beam connector assemblies utilize the US Conec MXC connector designed with PRIZM® MT ferrules. The MXC connector is a next generation connector optimized for direct card edge interface in densely populated front panel applications. MXC assemblies target hyper-scale data centers and disaggregation solutions with ultra-high fiber counts of up to 64 fibers in one connector resulting in 1.6 TB of data transmission per second with each fiber operating at 25 GBps.

The plug and receptacle design of the MXC eliminates the need for traditional optical connector adapters reducing the number of connector components and footprint size in high density applications. Expanded beam technology reduces the negative effect of end face dust and debris contamination on insertion loss, as well as provides a lower connector mating force. Design flexibility of assembly configurations includes fiber type, fiber count, and assembly lengths as needed to meet application requirements. AFL supports additional assembly customization for unique system design requirements.

Features

- Designed for high volume, low cost usage inside equipment
- Lower mating force required (~3N) vs. traditional mating force with physical contact MT ferrule (10-22N)
- High density connector allows up to 16 fibers per row with up to 4 rows (up to 64 fibers per termination)
- Lensed interface provides consistent loss and debris insensitivity
- Multimode and single-mode compatible
- Available in jacketed MicroCore®, jacketed ribbon or bare ribbon configurations

Applications

- High density, robust blind mate interconnect for data and telecommunications systems
- Card edge connectivity in the server, router and switch

Ordering Information

For ordering inquiries, contact AFL customer service at 1-800-235-3423.

FIBER TYPE*	CABLE TYPE	FIBER COUNT*	CONNECTOR END A	CONNECTOR END B	LENGTH (in meters)	METHOD (for Connector End B type MTP only)
OS2 OM1 OM2 OM3 OM4	Round, Jacketed MicroCore® Jacketed Ribbon Bare Ribbon	8 fibers 12 fibers 16 fibers 24 fibers 32 fibers 48 fibers 64 fibers	MXC Plug MXC Receptacle	MXC Plug MXC Receptacle MTP Elite, Female MTP Elite, Male MTP Std., Female MTP Std., Male SC Fanout LC Fanout ST Fanout FC Fanout	0001-XXXX	Method A = Key Up/Key Down Method B = Key Up/ Key Up

* Note: Not all configurations built by this configurator are available in all fiber types and fiber counts.

MicroCore is a registered trademark of AFL.
MXC and PRIZM are registered trademarks of US Conec Ltd.

