

DOSSERT® TYPE PSSR-AA, PSSR-CH-AA Tubular Bus Support

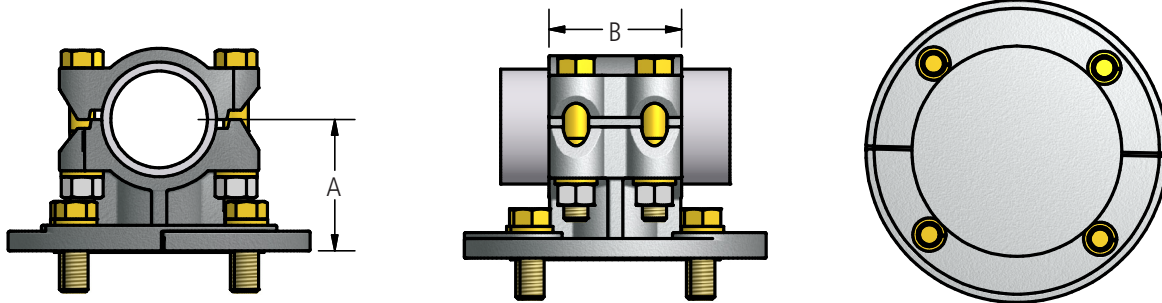
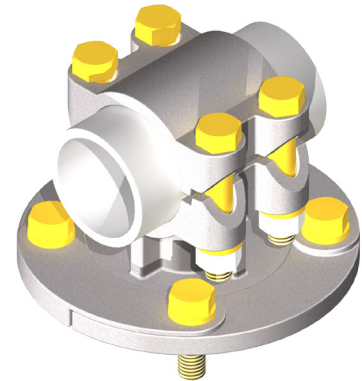
An aluminum support for securing a tubular bus to a post or pedestal type insulator. Fully adjustable to any angle within a complete circle (360°) with the advantage of four bolts maintaining angular setting as well as mounting pressure. Reversible cap permits rigid or slip fit on conductor. Unless otherwise specified cap screws are supplied.

Material

Aluminum Alloy

Hardware

Yellow anodized aluminum bolts, nuts, and lockwashers.
Galvanized steel base mounting hardware is included.



Ordering Information

| CATALOG NUMBER | | SPS | BOLT CIRCLE | DIMENSIONS IN INCHES | | | |
|----------------|---------------------|-------|-------------|----------------------|-------|-----------|------|
| STANDARD | WITH CHATTER SPRING | | | A | B | BOLT SIZE | |
| | | | | | | CAP | BASE |
| PSSR50-3-AA | PSSR50-3-CH-AA | 1/2 | 3 | 1-3/4 | 2-1/8 | 3/8 | 1/2 |
| PSSR50-5-AA | PSSR50-5-CH-AA | 1/2 | 5 | 2-1/8 | 2-1/8 | 3/8 | 5/8 |
| PSSR75-3-AA | PSSR75-3-CH-AA | 3/4 | 3 | 2 | 2-1/8 | 3/8 | 1/2 |
| PSSR75-5-AA | PSSR75-5-CH-AA | 3/4 | 5 | 2-1/4 | 2-1/8 | 3/8 | 5/8 |
| PSSR100-3-AA | PSSR100-3-CH-AA | 1 | 3 | 2 | 2-1/8 | 3/8 | 1/2 |
| PSSR100-5-AA | PSSR100-5-CH-AA | 1 | 5 | 2-1/4 | 2-1/8 | 3/8 | 5/8 |
| PSSR125-3-AA | PSSR125-3-CH-AA | 1-1/4 | 3 | 2-1/4 | 2-1/4 | 1/2 | 1/2 |
| PSSR125-5-AA | PSSR125-5-CH-AA | 1-1/4 | 5 | 2-3/8 | 2-1/4 | 1/2 | 5/8 |
| PSSR150-3-AA | PSSR150-3-CH-AA | 1-1/2 | 3 | 2-1/2 | 2-1/2 | 1/2 | 1/2 |
| PSSR150-5-AA | PSSR150-5-CH-AA | 1-1/2 | 5 | 2-1/2 | 2-1/2 | 1/2 | 5/8 |
| PSSR200-3-AA | PSSR200-3-CH-AA | 2 | 3 | 2-3/4 | 2-3/4 | 1/2 | 1/2 |
| PSSR200-5-AA | PSSR200-5-CH-AA | 2 | 5 | 2-3/4 | 2-3/4 | 1/2 | 5/8 |
| PSSR250-3-AA | PSSR250-3-CH-AA | 2-1/2 | 3 | 3-1/8 | 3 | 1/2 | 1/2 |
| PSSR250-5-AA | PSSR250-5-CH-AA | 2-1/2 | 5 | 3-1/8 | 3 | 1/2 | 5/8 |
| PSSR300-3-AA | PSSR300-3-CH-AA | 3 | 3 | 3-5/8 | 3-1/4 | 5/8 | 1/2 |
| PSSR300-5-AA | PSSR300-5-CH-AA | 3 | 5 | 3-5/8 | 3-1/4 | 5/8 | 5/8 |
| PSSR350-3-AA | PSSR350-3-CH-AA | 3-1/2 | 3 | 4 | 3-1/4 | 5/8 | 1/2 |
| PSSR350-5-AA | PSSR350-5-CH-AA | 3-1/2 | 5 | 4 | 3-1/4 | 5/8 | 5/8 |
| PSSR400-3-AA | PSSR400-3-CH-AA | 4 | 3 | 4-1/2 | 3-1/4 | 5/8 | 1/2 |
| PSSR400-5-AA | PSSR400-5-CH-AA | 4 | 5 | 4-1/2 | 3-1/4 | 5/8 | 5/8 |