

## DOSSERT® TYPE TP-N-AA, TPA-N-30-AA, TPA-N-45-AA, TPA-N-60-AA, TPA-N-90-AA Terminal Pipe Lug

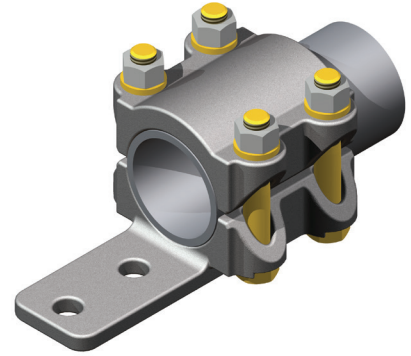
A bolted clamp type terminal for connecting standard pipe size tubular buses to flat surfaces.

### Material

Aluminum Alloy

### Hardware

Yellow anodized aluminum nuts, bolts and lockwashers.



### Notes

- Add an 'A' after TP. For a 30°, add '-30'; for a 45°, add '-45'; for a 60°, add '-60'; for a 90°, add '-90'. For a 1" pipe, with a 2 hole pad, at 45°, order TPA100-2N-45-AA.
- For a finished pad on both sides, add "F" to the end of pad number in catalog number EX: TPA100-2NF-45-AA.
- For contact surfaces coated with NO-OX-ID and packaged in polyethelene bag, add suffix "LP" to end of catalog number. EX: TP200-4N4-AA-LP

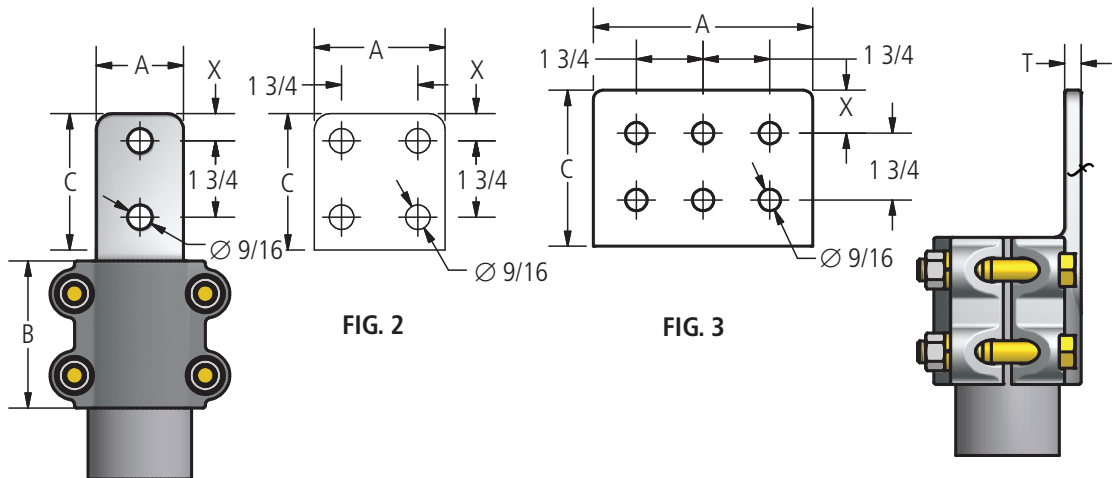
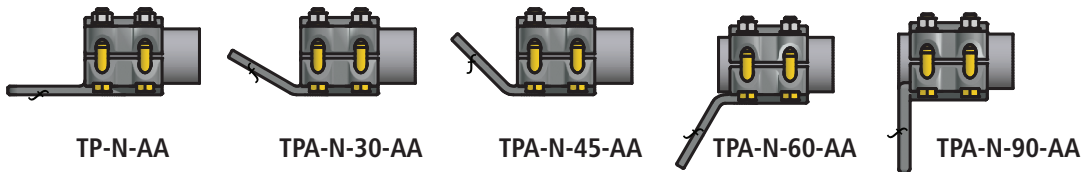


FIG. 1

FIG. 2

FIG. 3

## DOSSERT®

### TYPE TP-N-AA, TPA-N-30-AA, TPA-N-45-AA, TPA-N-60-AA, TPA-N-90-AA Terminal Pipe Lug

#### Ordering Information

CATALOG NUMBER					SPS	FIG. NO.	DIMENSIONS IN INCHES				
STRAIGHT	30 DEGREE	45 DEGREE	60 DEGREE	90 DEGREE			A	B	C	T	X
TP50-2N-AA	TPA50-2N-30-AA	TPA50-2N-45-AA	TPA50-2N-60-AA	TPA50-2N-90-AA	1/2	1	1 1/2	2 1/2	3	3/8	5/8
TP50-4N-AA	TPA50-4N-30-AA	TPA50-4N-45-AA	TPA50-4N-60-AA	TPA50-4N-90-AA	1/2	2	3	2 1/2	3	3/8	5/8
TP75-2N-AA	TPA75-2N-30-AA	TPA75-2N-45-AA	TPA75-2N-60-AA	TPA75-2N-90-AA	3/4	1	1 1/2	2 3/4	3	3/8	5/8
TP75-4N-AA	TPA75-4N-30-AA	TPA75-4N-45-AA	TPA75-4N-60-AA	TPA75-4N-90-AA	3/4	2	3	2 3/4	3	3/8	5/8
TP100-2N-AA	TPA100-2N-30-AA	TPA100-2N-45-AA	TPA100-2N-60-AA	TPA100-2N-90-AA	1	1	1 3/4	2 3/4	3	3/8	5/8
TP100-4N-AA	TPA100-4N-30-AA	TPA100-4N-45-AA	TPA100-4N-60-AA	TPA100-4N-90-AA	1	2	3	2 3/4	3	3/8	5/8
TP125-2N-AA	TPA125-2N-30-AA	TPA125-2N-45-AA	TPA125-2N-60-AA	TPA125-2N-90-AA	1 1/4	1	2	3	3	1/2	5/8
TP125-4N-AA	TPA125-4N-30-AA	TPA125-4N-45-AA	TPA125-4N-60-AA	TPA125-4N-90-AA	1 1/4	2	3	3	3	1/2	5/8
TP125-4N4-AA	TPA125-4N4-30-AA	TPA125-4N4-45-AA	TPA125-4N4-60-AA	TPA125-4N4-90-AA	1 1/4	2	4	3	4	1/2	1 1/8
TP150-2N-AA	TPA150-2N-30-AA	TPA150-2N-45-AA	TPA150-2N-60-AA	TPA150-2N-90-AA	1 1/2	1	2	3	3	1/2	5/8
TP150-4N-AA	TPA150-4N-30-AA	TPA150-4N-45-AA	TPA150-4N-60-AA	TPA150-4N-90-AA	1 1/2	2	3	3	3	1/2	5/8
TP150-4N4-AA	TPA150-4N4-30-AA	TPA150-4N4-45-AA	TPA150-4N4-60-AA	TPA150-4N4-90-AA	1 1/2	2	4	3	4	1/2	1 1/8
TP200-2N-AA	TPA200-2N-30-AA	TPA200-2N-45-AA	TPA200-2N-60-AA	TPA200-2N-90-AA	2	1	2	3 1/4	3	1/2	5/8
TP200-4N-AA	TPA200-4N-30-AA	TPA200-4N-45-AA	TPA200-4N-60-AA	TPA200-4N-90-AA	2	2	3	3 1/4	3	1/2	5/8
TP200-4N4-AA	TPA200-4N4-30-AA	TPA200-4N4-45-AA	TPA200-4N4-60-AA	TPA200-4N4-90-AA	2	2	4	3 1/4	4	1/2	1 1/8
TP250-2N-AA	TPA250-2N-30-AA	TPA250-2N-45-AA	TPA250-2N-60-AA	TPA250-2N-90-AA	2 1/2	1	2	3 1/4	3	5/8	5/8
TP250-4N-AA	TPA250-4N-30-AA	TPA250-4N-45-AA	TPA250-4N-60-AA	TPA250-4N-90-AA	2 1/2	2	3	3 1/4	3	5/8	5/8
TP250-4N4-AA	TPA250-4N4-30-AA	TPA250-4N4-45-AA	TPA250-4N4-60-AA	TPA250-4N4-90-AA	2 1/2	2	4	3 1/4	4	5/8	1 1/8
TP300-4S4-AA	TPA300-4S4-30-AA	TPA300-4S4-45-AA	TPA300-4S4-60-AA	TPA300-4S4-90-AA	3	2	4	3 3/4	4	5/8	1
TP300-2N-AA	TPA300-2N-30-AA	TPA300-2N-45-AA	TPA300-2N-60-AA	TPA300-2N-90-AA	3	1	2	3 3/4	3	5/8	5/8
TP300-4N-AA	TPA300-4N-30-AA	TPA300-4N-45-AA	TPA300-4N-60-AA	TPA300-4N-90-AA	3	2	3	3 3/4	3	5/8	5/8
TP300-4N4-AA	TPA300-4N4-30-AA	TPA300-4N4-45-AA	TPA300-4N4-60-AA	TPA300-4N4-90-AA	3	2	4	3 3/4	4	5/8	1 1/8
TP300-6N4-AA	TPA300-6N4-30-AA	TPA300-6N4-45-AA	TPA300-6N4-60-AA	TPA300-6N4-90-AA	3	3	6	3 3/4	4	5/8	1 1/8
TP350-2N-AA	TPA350-2N-30-AA	TPA350-2N-45-AA	TPA350-2N-60-AA	TPA350-2N-90-AA	3 1/2	1	3	3 1/2	3	3/4	5/8
TP350-4N-AA	TPA350-4N-30-AA	TPA350-4N-45-AA	TPA350-4N-60-AA	TPA350-4N-90-AA	3 1/2	2	3	3 1/2	3	3/4	5/8
TP350-4N4-AA	TPA350-4N4-30-AA	TPA350-4N4-45-AA	TPA350-4N4-60-AA	TPA350-4N4-90-AA	3 1/2	2	4	3 1/2	4	3/4	1 1/8
TP350-6N4-AA	TPA350-6N4-30-AA	TPA350-6N4-45-AA	TPA350-6N4-60-AA	TPA350-6N4-90-AA	3 1/2	3	6	3 1/2	4	3/4	1 1/8
TP400-2N-AA	TPA400-2N-30-AA	TPA400-2N-45-AA	TPA400-2N-60-AA	TPA400-2N-90-AA	4	2	3	3 3/4	3	3/4	5/8
TP400-4N-AA	TPA400-4N-30-AA	TPA400-4N-45-AA	TPA400-4N-60-AA	TPA400-4N-90-AA	4	2	3	3 3/4	3	3/4	5/8
TP400-4N4-AA	TPA400-4N4-30-AA	TPA400-4N4-45-AA	TPA400-4N4-60-AA	TPA400-4N4-90-AA	4	2	4	3 3/4	4	3/4	1 1/8
TP400-6N4-AA	TPA400-6N4-30-AA	TPA400-6N4-45-AA	TPA400-6N4-60-AA	TPA400-6N4-90-AA	4	3	6	3 3/4	4	13/16	1 1/8
TP450-4N4-AA	TPA450-4N4-30-AA	TPA450-4N4-45-AA	TPA450-4N4-60-AA	TPA450-4N4-90-AA	4 1/2	2	4	6	4 1/4	7/8	1 1/8
TP500-4N-AA	TPA500-4N-30-AA	TPA500-4N-45-AA	TPA500-4N-60-AA	TPA500-4N-90-AA	5	2	3	7	3	7/8	5/8
TP500-4N4-AA	TPA500-4N4-30-AA	TPA500-4N4-45-AA	TPA500-4N4-60-AA	TPA500-4N4-90-AA	5	2	4	7	4	1 1/8	1 1/8
TP500-6N4-AA	TPA500-6N4-30-AA	TPA500-6N4-45-AA	TPA500-6N4-60-AA	TPA500-6N4-90-AA	5	3	6	7	4	7/8	1 1/8
TP600-4N4-AA	TPA600-4N4-30-AA	TPA600-4N4-45-AA	TPA600-4N4-60-AA	TPA600-4N4-90-AA	6	2	4	5	4	1 1/4	1 1/8
TP600-6N4-AA	TPA600-6N4-30-AA	TPA600-6N4-45-AA	TPA600-6N4-60-AA	TPA600-6N4-90-AA	6	3	6	5	4	1 1/4	1 1/8
TP800R-6N4-AA	TPA800R-6N4-30-AA	TPA800R-6N4-45-AA	TPA800R-6N4-60-AA	TPA800R-6N4-90-AA	8 O.D.	3	6	5	4	1 1/8	1 1/8

230 kV Aluminum Bolted Terminal Connectors