

### DOSSERT®

#### TYPE TP-N, TPA-N-30-AA, TPA-N-45-AA, TPA-N-60-AA, TPA-N-90-AA Terminal Pipe Lug

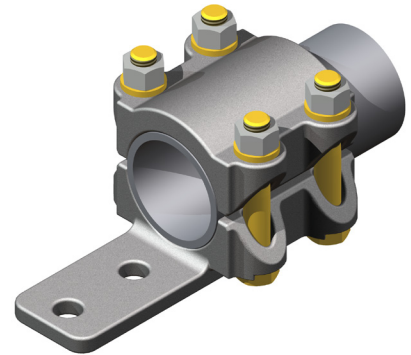
A bolted clamp type terminal for connecting standard pipe size tubular buses to flat surfaces.

#### Material

Aluminum Alloy

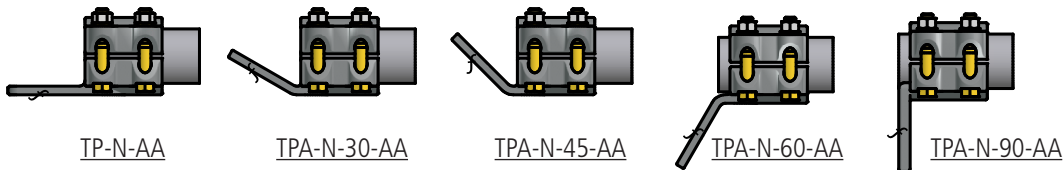
#### Hardware

Yellow anodized aluminum nuts, bolts and lockwashers.



#### Notes

1. Add an 'A' after TP. For a 30° add '-30', for a 45° add '-45', for a 60° add '-60', for a 90° add '-90'. For a 1" pipe, with a 2 hole pad, at 45° order TPA100-2N-45-AA.
2. For a finished pad on both sides, add "F" to the end of pad number in catalog number EX: TPA100-2NF-45-AA.
3. For contact surfaces coated with NO-OX-ID and packaged in polyethelene bag, add suffix "LP" to end of catalog number. EX: TPC200-4N4-AA-LP



TP-N-AA

TPA-N-30-AA

TPA-N-45-AA

TPA-N-60-AA

TPA-N-90-AA

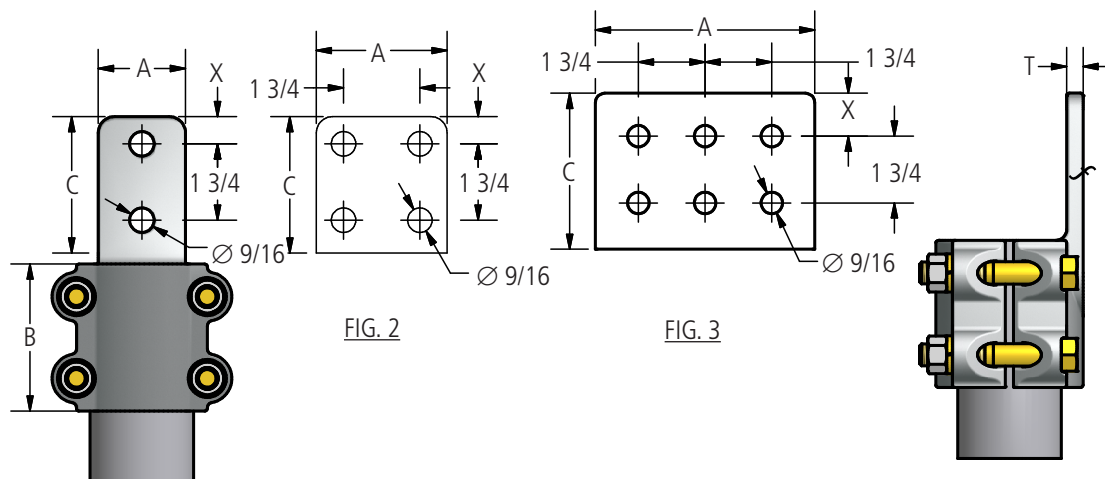


FIG. 1

FIG. 2

FIG. 3



# 230 kV Aluminum Bolted Terminal Connectors

**DOSSERT®**

**TYPE TP-N, TPA-N-30-AA, TPA-N-45-AA, TPA-N-60-AA, TPA-N-90-AA**  
Terminal Pipe Lug

## Ordering Information

CATALOG NUMBER					SPS	FIG NUM	DIMENSIONS IN INCHES				
STRAIGHT	30 DEGREE	45 DEGREE	60 DEGREE	90 DEGREE			A	B	C	T	X
TP50-2N-AA	TP50-2N-30-AA	TP50-2N-45-AA	TP50-2N-60-AA	TP50-2N-90-AA	1/2	1	1 1/2	2 1/2	3	3/8	5/8
TP50-4N-AA	TP50-4N-30-AA	TP50-4N-45-AA	TP50-4N-60-AA	TP50-4N-90-AA	1/2	2	3	2 1/2	3	3/8	5/8
TP75-2N-AA	TP75-2N-30-AA	TP75-2N-45-AA	TP75-2N-60-AA	TP75-2N-90-AA	3/4	1	1 1/2	2 3/4	3	3/8	5/8
TP75-4N-AA	TP75-4N-30-AA	TP75-4N-45-AA	TP75-4N-60-AA	TP75-4N-90-AA	3/4	2	3	2 3/4	3	3/8	5/8
TP100-2N-AA	TP100-2N-30-AA	TP100-2N-45-AA	TP100-2N-60-AA	TP100-2N-90-AA	1	1	1 3/4	2 3/4	3	3/8	5/8
TP100-4N-AA	TP100-4N-30-AA	TP100-4N-45-AA	TP100-4N-60-AA	TP100-4N-90-AA	1	2	3	2 3/4	3	3/8	5/8
TP125-2N-AA	TP125-2N-30-AA	TP125-2N-45-AA	TP125-2N-60-AA	TP125-2N-90-AA	1 1/4	1	2	2 3/4	3	1/2	5/8
TP125-4N-AA	TP125-4N-30-AA	TP125-4N-45-AA	TP125-4N-60-AA	TP125-4N-90-AA	1 1/4	2	3	3	3	1/2	5/8
TP125-4N4-AA	TP125-4N4-30-AA	TP125-4N4-45-AA	TP125-4N4-60-AA	TP125-4N4-90-AA	1 1/4	2	4	3	4	1/2	1 1/8
TP150-2N-AA	TP150-2N-30-AA	TP150-2N-45-AA	TP150-2N-60-AA	TP150-2N-90-AA	1 1/2	1	2	3	3	1/2	5/8
TP150-4N-AA	TP150-4N-30-AA	TP150-4N-45-AA	TP150-4N-60-AA	TP150-4N-90-AA	1 1/2	2	3	3	3	1/2	5/8
TP150-4N4-AA	TP150-4N4-30-AA	TP150-4N4-45-AA	TP150-4N4-60-AA	TP150-4N4-90-AA	1 1/2	2	4	3	3	1/2	1 1/8
TP200-2N-AA	TP200-2N-30-AA	TP200-2N-45-AA	TP200-2N-60-AA	TP200-2N-90-AA	2	1	2	3 1/4	3	1/2	5/8
TP200-4N-AA	TP200-4N-30-AA	TP200-4N-45-AA	TP200-4N-60-AA	TP200-4N-90-AA	2	2	3	3 1/4	3	1/2	5/8
TP200-4N4-AA	TP200-4N4-30-AA	TP200-4N4-45-AA	TP200-4N4-60-AA	TP200-4N4-90-AA	2	2	4	3 1/4	4	1/2	1 1/8
TP250-2N-AA	TP250-2N-30-AA	TP250-2N-45-AA	TP250-2N-60-AA	TP250-2N-90-AA	2 1/2	1	2	3 1/4	3	5/8	5/8
TP250-4N-AA	TP250-4N-30-AA	TP250-4N-45-AA	TP250-4N-60-AA	TP250-4N-90-AA	2 1/2	2	3	3 1/4	3	5/8	5/8
TP250-4N4-AA	TP250-4N4-30-AA	TP250-4N4-45-AA	TP250-4N4-60-AA	TP250-4N4-90-AA	2 1/2	2	4	3 1/4	4	5/8	1 1/8
TP300-4S4-AA	TP300-4S4-30-AA	TP300-4S4-45-AA	TP300-4S4-60-AA	TP300-4S4-90-AA	3	2	4	3 3/4	4	5/8	1
TP300-2N-AA	TP300-2N-30-AA	TP300-2N-45-AA	TP300-2N-60-AA	TP300-2N-90-AA	3	1	2	3 3/4	3	5/8	5/8
TP300-4N-AA	TP300-4N-30-AA	TP300-4N-45-AA	TP300-4N-60-AA	TP300-4N-90-AA	3	2	3	3 3/4	3	5/8	5/8
TP300-4N4-AA	TP300-4N4-30-AA	TP300-4N4-45-AA	TP300-4N4-60-AA	TP300-4N4-90-AA	3	2	4	3 3/4	4	5/8	1 1/8
TP300-6N4-AA	TP300-6N4-30-AA	TP300-6N4-45-AA	TP300-6N4-60-AA	TP300-6N4-90-AA	3	3	6	3 3/4	4	5/8	1 1/8
TP350-2N-AA	TP350-2N-30-AA	TP350-2N-45-AA	TP350-2N-60-AA	TP350-2N-90-AA	3 1/2	1	3	3 1/2	3	3/4	5/8
TP350-4N-AA	TP350-4N-30-AA	TP350-4N-45-AA	TP350-4N-vAA	TP350-4N-90-AA	3 1/2	2	3	3 1/2	3	3/4	5/8
TP350-4N4-AA	TP350-4N4-30-AA	TP350-4N4-45-AA	TP350-4N4-60-AA	TP350-4N4-90-AA	3 1/2	2	4	3 1/2	4	3/4	1 1/8
TP350-6N4-AA	TP350-6N4-30-AA	TP350-6N4-45-AA	TP350-6N4-60-AA	TP350-6N4-90-AA	3 1/2	3	6	3 1/2	4	3/4	1 1/8
TP400-2N-AA	TP400-2N-30-AA	TP400-2N-45-AA	TP400-2N-60-AA	TP400-2N-90-AA	4	2	3	3 3/4	3	3/4	5/8
TP400-4N-AA	TP400-4N-30-AA	TP400-4N-45-AA	TP400-4N-60-AA	TP400-4N-90-AA	4	2	3	3 3/4	3	3/4	5/8
TP400-4N4-AA	TP400-4N4-30-AA	TP400-4N4-45-AA	TP400-4N4-60-AA	TP400-4N4-90-AA	4	2	4	3 3/4	4	3/4	1 1/8
TP400-6N4-AA	TP400-6N4-30-AA	TP400-6N4-45-AA	TP400-6N4-60-AA	TP400-6N4-90-AA	4	3	6	3 3/4	4	3/4	1 1/8
TP500-4N-AA	TP500-4N-30-AA	TP500-4N-45-AA	TP500-4N-60-AA	TP500-4N-90-AA	5	2	3	7	3	7/8	5/8
TP500-4N4-AA	TP500-4N4-30-AA	TP500-4N4-45-AA	TP500-4N4-60-AA	TP500-4N4-90-AA	5	2	4	7	4	7/8	1 1/8
TP500-6N4-AA	TP500-6N4-30-AA	TP500-6N4-45-AA	TP500-6N4-60-AA	TP500-6N4-90-AA	5	3	6	7	4	7/8	1 1/8
TP600-4N4-AA	TP600-4N4-30-AA	TP600-4N4-45-AA	TP600-4N4-60-AA	TP600-4N4-90-AA	6	2	4	7	4	1	1 1/8
TP600-6N4-AA	TP600-6N4-30-AA	TP600-6N4-45-AA	TP600-6N4-60-AA	TP600-6N4-90-AA	6	3	6	7	4	1	1 1/8

230 kV Aluminum Bolted Terminal Connectors