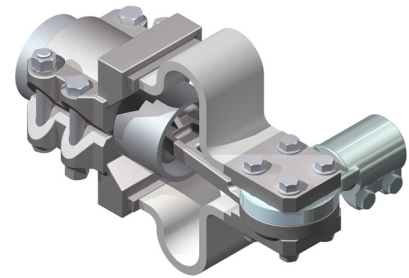


DOSSERT® TYPE SXLW-SI-AA

Aluminum To Bronze Angular Expansion Connector

Expansion connector is designed for expansion and contraction in long bus runs. Stud connector can be adjusted to suit customers requirements. Laminated straps provide for 1.4" of expansion or contraction for pipe sizes 3/4" through 1 1/2" NPS. For pipe sizes 2" through 4", the straps allow for expansion or contraction of 2.6."



Material

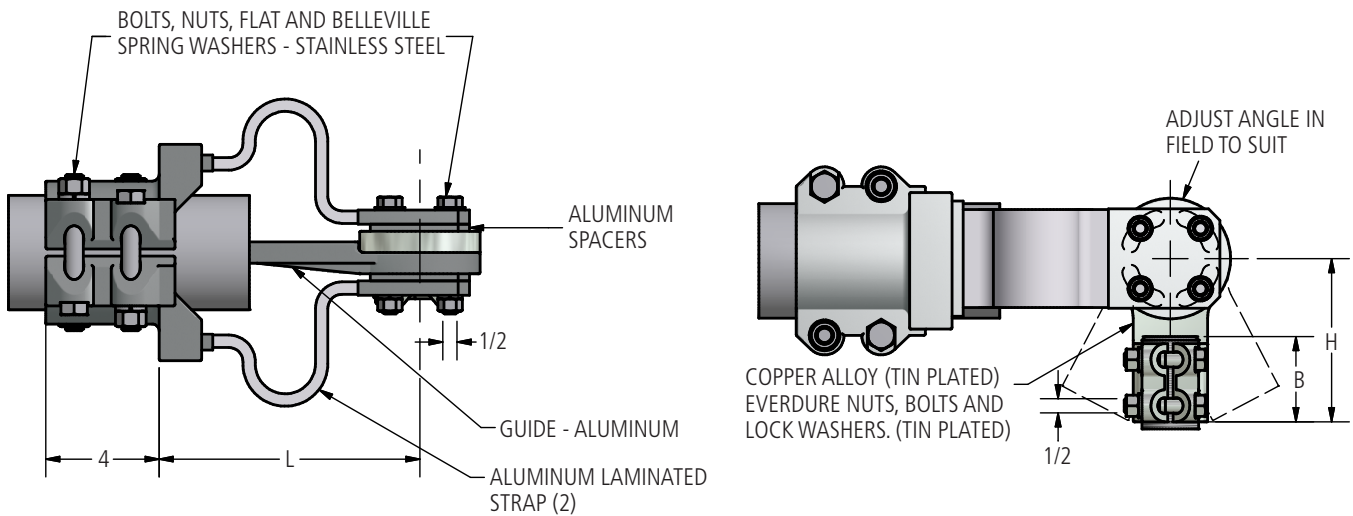
Aluminum Alloy, Copper Alloy

Hardware

Stainless steel Everdure nuts, bolts and lockwashers.

Notes

- For a costume thread count change the number after the "T" in the catalog number.
Ex:WSXL200C-350-SI-T0-AA
Additional sizes are available.



Ordering Information

CATALOG NUMBER	STUD DIAMETER	THREADS PER INCH	SPS	DIMENSIONS IN INCHES			
				B	H	L	
SXLW200C-350-SI-T12-AA	2	12	2	SCH 40	2 3/4	5 3/4	7 3/4
SXLW200C-400E-SI-T12-AA	2	12	4	SCH 80	2 3/4	5 3/4	9 5/16
SXLW300C-400E-SI-T12-AA	3	12	4	SCH 80	3	6 5/8	9 5/16