

## DOSSERT<sup>®</sup> TYPE PFTS-N-AA Pipe to NEMA Pad

Tee tap is designed to provide terminal connections on side of tubular bus. Four clamp bolts ensure positive electrical contact. Pad conforms to NEMA standards.

### Material

Aluminum Alloy

### Hardware

Yellow anodized aluminum bolts, nuts and lockwashers.

### Notes

- For Stainless Steel bolts, lockwashers and Everdur nuts add "-SSHBN" to catalog number. EX: PFTS600-1-6N4-AA-SSHBN
- For Galvanized Steel Hardware add "-GS" to catalog number. EX: PFTS300-1-2N-AA-GS
- \*Design has 6 Bolts

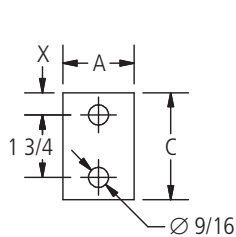
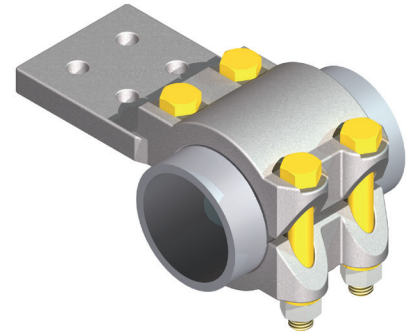


FIG. 1

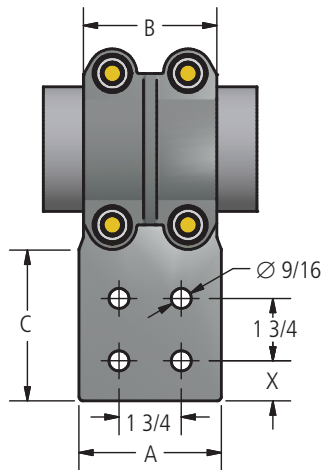


FIG. 2

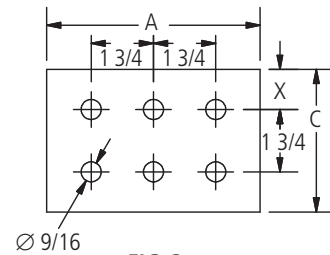
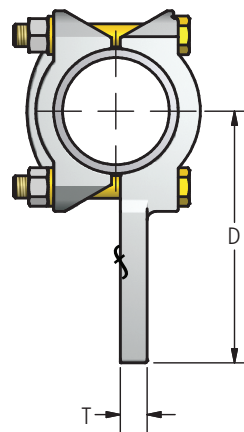


FIG. 3

### Ordering Information

CATALOG NUMBER	SPS	FIG. NO.	DIMENSIONS IN INCHES						BOLT SIZE
			A	B	C	D	T	X	
PFTS75-1-2N-AA	3/4	1	2	2-3/4	3	4-5/8	3/8	5/8	1/2
PFTS75-1-4N-AA	3/4	2	3	2-3/4	3	4-5/8	3/8	5/8	1/2
PFTS100-1-2N-AA	1	1	2	2-3/4	3	4-13/16	3/8	5/8	1/2
PFTS100-1-4N-AA	1	2	3	2-3/4	3	4-13/16	3/8	5/8	1/2
PFTS100-1-4N4-AA	1	2	4	2-3/4	4	4-13/16	3/8	1-1/8	1/2
PFTS125-1-2N-AA	1-1/4	1	2	3	3	4-15/16	1/2	5/8	1/2
PFTS125-1-4N-AA	1-1/4	2	3	3	3	4-15/16	1/2	5/8	1/2
PFTS125-1-4N4-AA	1-1/4	2	4	3	4	5-31/32	1/2	1-1/8	1/2
PFTS150-1-2N-AA	1-1/2	1	2	3	3	5-1/16	1/2	5/8	1/2
PFTS150-1-4N-AA	1-1/2	2	3	3	3	5-1/16	1/2	5/8	1/2
PFTS150-1-4N4-AA	1-1/2	2	4	3	4	6-1/16	1/2	1-1/8	1/2

## DOSSERT® TYPE PFTS-N-AA (cont.) Pipe to NEMA Pad

### Ordering Information

CATALOG NUMBER	SPS	FIG. NO.	DIMENSIONS IN INCHES						BOLT SIZE
			A	B	C	D	T	X	
PFTS200-1-2N-AA	2	1	2	3-1/4	3	5-5/16	5/8	5/8	1/2
PFTS200-1-3N-AA	2	2	3	3-1/4	3	5-5/16	5/8	5/8	1/2
PFTS200-1-4N-AA	2	2	3	3-1/4	3	5-5/16	5/8	5/8	1/2
PFTS200-1-4N4-AA	2	2	4	3-1/4	4	6-5/16	5/8	1-1/8	1/2
PFTS250-1-2N-AA	2-1/2	1	2	3-1/4	3	5-9/16	5/8	5/8	1/2
PFTS250-1-4N-AA	2-1/2	2	3	3-1/4	3	5-9/16	3/4	5/8	1/2
PFTS250-1-4N4-AA	2-1/2	2	4	3-1/4	4	6-9/16	3/4	1-1/8	1/2
PFTS300-1-2N-AA	3	1	2	3-3/4	3	6-1/16	3/4	5/8	5/8
PFTS300-1-4N-AA	3	2	3	3-3/4	3-1/2	6-3/8	3/4	5/8	5/8
PFTS300-1-4N4-AA	3	2	4	3-3/4	4	7-1/16	3/4	1-1/8	5/8
PFTS350-1-2N-AA	3-1/2	1	2	3-3/4	3	6-5/16	7/8	5/8	5/8
PFTS350-1-4N-AA	3-1/2	2	3	3-3/4	3	6-5/16	7/8	5/8	5/8
PFTS350-1-4N4-AA	3-1/2	2	4	3-3/4	4	7-5/16	7/8	1-1/8	5/8
PFTS350-1-6N4-AA	3-1/2	3	6	3-3/4	4	7-5/16	7/8	1-1/8	5/8
PFTS400-1-2N-AA	4	1	2	3-3/4	3	6-9/16	7/8	5/8	5/8
PFTS400-1-4N-AA	4	2	3	3-3/4	3	6-9/16	7/8	5/8	5/8
PFTS400-1-4N4-AA	4	2	4	3-3/4	4	7-9/16	7/8	1-1/8	5/8
PFTS400-1-6N4-AA	4	3	6	3-3/4	4	7-9/16	7/8	1-1/8	5/8
PFTS500-1-4N-AA	5	2	3	3-3/4	3	7-1/8	1	5/8	5/8
PFTS500-1-4N4-AA	5	2	4	3-3/4	4	8-1/8	1	1-1/8	5/8
PFTS500-1-6N4-AA	5	3	6	3-3/4	4	8-1/8	1	1-1/8	5/8
PFTS500R-1-4N4-AA	5 OD	2	4	3-1/4	4	7-13/16	1	1-1/8	5/8
PFTS600-1-4N4-AA *	6	2	4	6	4	8-3/4	1	1-1/8	5/8
PFTS600-1.125T-4N4-AA *	6	2	4	6	4	8-3/4	1-1/8	1-1/8	5/8
PFTS600-1-6N4-AA *	6	3	6	8	4	8-5/8	1-1/8	1-1/8	5/8
PFTS800R-1-6N4-AA *	8 OD	3	6	5	4	9-5/16	1-1/8	1-1/8	5/8

\*Design has 6 Bolts