

DOSSERT® TYPE 16300, 16500, 16700 Cable Support

The 16300, 16500 and 16700 series supports are designed for mounting stranded aluminum or ACSR conductors. New cable support reduces stock with extended range taking capabilities. These supports can be used for two or four conductors and the cables can be oriented in any angle from the base. Three supports provide cable range from 4/0 to 3500 MCM. Available in 3", 5" and 7" bolt circles.

Material

Aluminum Alloy

Hardware

Yellow anodized aluminum nuts, bolts and lockwashers.
Galvanized steel mounting hardware included.

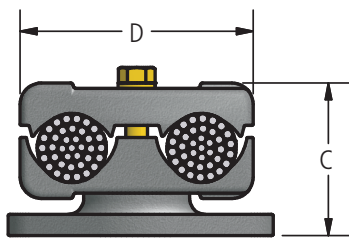
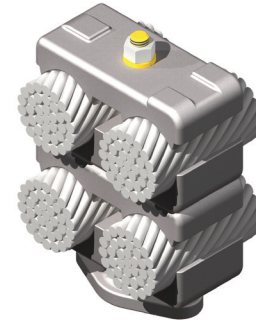


FIG. 1

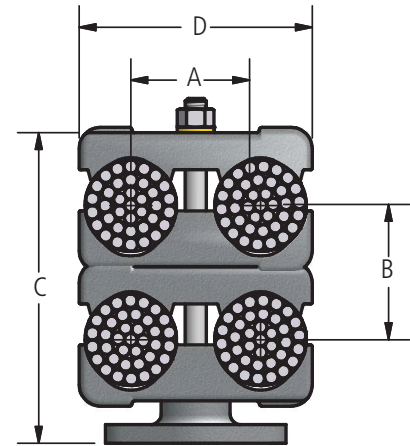
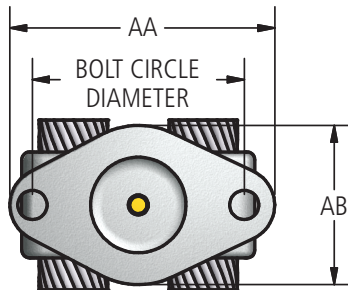


FIG. 2

Ordering Information

NO. OF CABLES	FIG. NO.	AAC CABLE RANGE		CATALOG NUMBER			DIAMETER RANGE IN.	A	DIMENSIONS IN INCHES				ULTIMATE CANTILEVER FORCE (LBS)	
		MIN	MAX	3" BOLT CIRCLE	5" BOLT CIRCLE	7" BOLT CIRCLE			B	C		D		
										MIN	MAX			MIN
2	1	4/0	795 MCM	16320-795C	16520-795C	16720-795C	.522 - 1.026	2.40	-	-	3 1/16	3 13/16	4 3/8	600
4	2	4/0	795 MCM	16340-795C	16540-795C	16740-795C	.522 - 1.026	2.40	1 13/16	2 1/2	4 7/8	6 1/4	4 3/8	300
2	1	795 MCM	2000 MCM	16320-2000C	16520-2000C	16720-2000C	1.026 - 1.630	2.40	-	-	3 1/4	4 1/16	4 3/8	600
4	2	795 MCM	2000 MCM	16340-2000C	16540-2000C	16740-2000C	1.026 - 1.630	2.40	2	2 13/16	5 1/4	6 7/8	4 3/8	300
2	1	2000 MCM	3500 MCM	16320-3500C	16520-3500C	16720-3500C	1.630 - 2.158	2.75	-	-	3 7/8	4 1/2	5 1/2	600
4	2	2000 MCM	3500 MCM	16340-3500C	16540-3500C	16740-3500C	1.630 - 2.158	2.75	2 5/8	3 3/16	7 9/16	7 9/16	5 1/2	300

BOLT MOUNTING CIRCLE	DIMENSIONS IN INCHES	
IN	AA	AB
3	4.25	2.50
5	6.25	3.75
7	8.75	3.75