

DOSSERT® TYPE UD-AA Universal Parallel Clamp

A universal clamp to provide a connection for two cables or wires over a wide range of sizes.

Material

Aluminum Alloy

Hardware

Yellow anodized aluminum bolts, nuts and lockwashers.

Notes

Voltage rating is 230 kV

For tin plating add "-SN" to end of catalog number. EX: UD50-21-AA-SN

Add suffix "GS" for galvanized steel hardware. EX: UD50-21-AA-GS

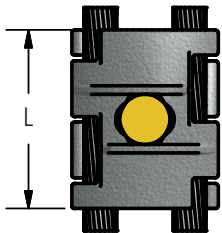
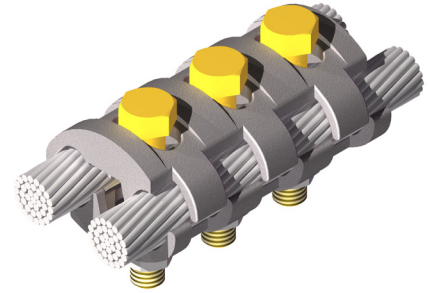


FIG. 1

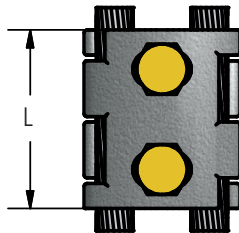


FIG. 2

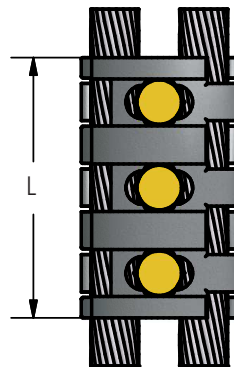
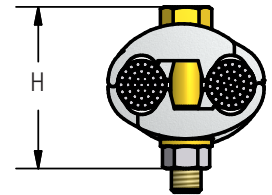


FIG. 3



Ordering Information

CATALOG NUMBER	CONDUCTOR RANGE AAC		FIGURE NUMBER	DIMENSIONS IN INCHES		
	MIN	MAX		H	L	BOLT SIZE
UD10-2-AA	#6 SOL.	1/0 STR.	1	1 3/4	2	3/8
UD21-4-AA	#4 SOL.	4/0 STR.	2	2	2 1/4	3/8
UD30-6-AA	#2 SOL.	300 MCM	2	2 1/4	2 1/2	3/8
UD50-21-AA	4/0 STR.	500 MCM	3	2 3/4	4 3/8	1/2
UD80-30-AA	300 MCM	800 MCM	3	3 1/4	4 1/2	1/2
UD100-50-AA	500 MCM	1000 MCM	3	3 1/2	4 5/8	1/2