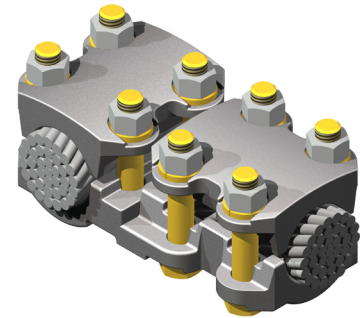


DOSSERT®

TYPE BCV-AA

Cable to Cable Tee

Tee connectors are designed for use with stranded aluminum or ACSR conductors. Tees are designed with universal grooves to accept a wide range of conductor sizes. Four clamp bolts on each conductor insure a positive electrical contact.

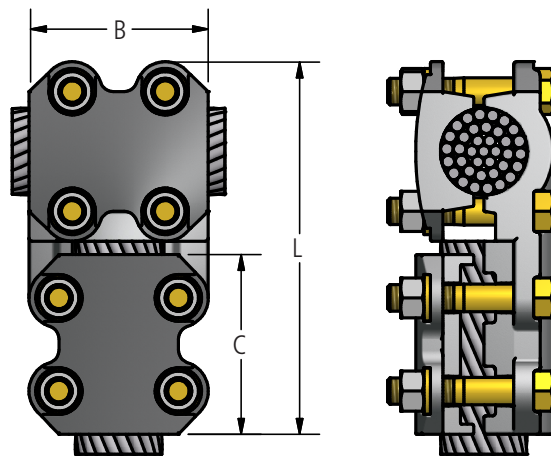


Material

Aluminum Alloy

Hardware

Yellow anodized aluminum nuts, bolts and lockwashers.



Ordering Information

CATALOG NUMBER	AAC RUN		ACSR RUN		AAC TAP		ACSR TAP		DIMENSIONS IN INCHES			BOLT SIZE	
	MIN	MAX	MIN	MAX	MIN	MAX	MIN	MAX	B	C	L	RUN	TAP
BCV10-10-AA	4	1/0	4	1/0	4	1/0	4	1/0	1-7/8	1-7/8	4-3/8	1/2	1/2
BCV25-25-AA	1/0	250	1/0	4/0	1/0	250	1/0	4/0	3	3	5-5/8	1/2	1/2
BCV40-25-AA	250	400	4/0	397.4	1/0	250	1/0	4/0	3	3	5-3/4	1/2	1/2
BCV40-40-AA	250	400	4/0	397.4	250	400	4/0	397.5	3	3	5-3/4	1/2	1/2
BCV40-60-AA	250	400	4/0	397.4	350	600	336.4	477	3	3	5-3/4	1/2	1/2
BCV40-90-AA	250	400	4/0	397.4	500	900	477	795	3	3	5-3/4	1/2	1/2
BCV60-25-AA	350	600	336.4	477	1/0	250	1/0	4/0	3	3	5-15/16	1/2	1/2
BCV60-40-AA	350	600	336.4	477	250	400	4/0	397.5	3	3	5-15/16	1/2	1/2
BCV60-60-AA	350	600	336.4	477	350	600	336.4	477	3	3	5-15/16	1/2	1/2
BCV60-90-AA	350	600	336.4	477	500	900	477	795	3	3	5-15/16	1/2	1/2
BCV90-25-AA	500	900	477	795	1/0	250	1/0	4/0	3	3	6-1/8	1/2	1/2
BCV90-40-AA	500	900	477	795	250	400	4/0	397.5	3	3	6-1/8	1/2	1/2
BCV90-60-AA	500	900	477	795	350	600	336.4	477	3	3	6-1/8	1/2	1/2
BCV90-90-AA	500	900	477	795	500	900	477	795	3	3	6-1/8	1/2	1/2
BCV90-125-AA	500	900	477	795	900	1250	715	1113	3	3-1/4	6-3/8	1/2	1/2



230 kV Aluminum Bolted Tee & Vee Connectors

DOSSERT®

TYPE BCV-AA

Cable to Cable Tee

Ordering Information

CATALOG NUMBER	AAC RUN		ACSR RUN		AAC TAP		ACSR TAP		DIMENSIONS IN INCHES			BOLT SIZE	
	MIN	MAX	MIN	MAX	MIN	MAX	MIN	MAX	B	C	L	RUN	TAP
BCV125-25-AA	900	1250	715	1113	1/0	250	1/0	4/0	3-1/4	3	6-5/16	1/2	1/2
BCV125-40-AA	900	1250	715	1113	250	400	4/0	397.5	3-1/4	3	6-5/16	1/2	1/2
BCV125-60-AA	900	1250	715	1113	350	600	336.4	477	3-1/4	3	6-5/16	1/2	1/2
BCV125-90-AA	900	1250	715	1113	500	900	477	795	3-1/4	3	6-5/16	1/2	1/2
BCV125-125-AA	900	1250	715	1113	900	1250	715	1113	3-1/4	3-1/4	6-9/16	1/2	1/2
BCV125-160-AA	900	1250	715	1113	1250	1600	1113	1431	4-3/8	4-3/8	7-11/16	1/2	5/8
BCV160-25-AA	1250	1600	1113	1431	1/0	250	1/0	4/0	4-3/8	3	6-7/8	5/8	1/2
BCV160-40-AA	1250	1600	1113	1431	250	400	4/0	397.5	4-3/8	3	6-7/8	5/8	1/2
BCV160-60-AA	1250	1600	1113	1431	350	600	336.4	477	4-3/8	3	6-7/8	5/8	1/2
BCV160-60S-AA	1250	1600	1113	1431	4/0	600	3/0	477	4-3/8	3	6-7/8	5/8	1/2
BCV160-90-AA	1250	1600	1113	1431	500	900	477	795	4-3/8	3	6-7/8	5/8	1/2
BCV160-125-AA	1250	1600	1113	1431	900	1250	715	1113	4-3/8	3-1/4	7-1/8	5/8	1/2
BCV160-160-AA	1250	1600	1113	1431	1250	1600	1113	1431	4-3/8	4-3/8	8-1/4	5/8	5/8
BCV160-200-AA	1250	1600	1113	1431	1500	2000	1272	1780	4-3/8	4-1/2	8-3/8	5/8	5/8
BCV200-25-AA	1500	2000	1272	1780	1/0	250	1/0	4/0	4-1/2	3	7-1/8	5/8	1/2
BCV200-40-AA	1500	2000	1272	1780	250	400	4/0	397.5	4-1/2	3	7-1/8	5/8	1/2
BCV200-60-AA	1500	2000	1272	1780	350	600	336.4	477	4-1/2	3	7-1/8	5/8	1/2
BCV200-90-AA	1500	2000	1272	1780	500	900	477	795	4-1/2	3	7-1/8	5/8	1/2
BCV200-125-AA	1500	2000	1272	1780	900	1250	715	1113	4-1/2	3-1/4	7-3/8	5/8	1/2
BCV200-160-AA	1500	2000	1272	1780	1250	1600	1113	1431	4-1/2	4-3/8	8-1/2	5/8	5/8
BCV200-200-AA	1500	2000	1272	1780	1500	2000	1272	1780	4-1/2	4-1/2	8-5/8	5/8	5/8
BCV200-250-AA	1500	2000	1272	1780	2000	2500	1780	2300	4-1/2	4-1/2	8-5/8	5/8	5/8
BCV250-25-AA	2000	2500	1780	2300	1/0	250	1/0	4/0	4-1/2	3	7-1/4	5/8	1/2
BCV250-40-AA	2000	2500	1780	2300	250	400	4/0	397.5	4-1/2	3	7-1/4	5/8	1/2
BCV250-60-AA	2000	2500	1780	2300	350	600	336.4	477	4-1/2	3	7-1/4	5/8	1/2
BCV250-90-AA	2000	2500	1780	2300	500	900	477	795	4-1/2	3	7-1/4	5/8	1/2
BCV250-125-AA	2000	2500	1780	2300	900	1250	715	1113	4-1/2	3-1/4	7-1/2	5/8	1/2
BCV250-160-AA	2000	2500	1780	2300	1250	1600	1113	1431	4-1/2	4-3/8	8-5/8	5/8	5/8
BCV250-200-AA	2000	2500	1780	2300	1500	2000	1272	1780	4-1/2	4-1/2	8-3/4	5/8	5/8
BCV250-250-AA	2000	2500	1780	2300	2000	2500	1780	2300	4-1/2	4-1/2	8-3/4	5/8	5/8
BCV250-300-AA	2000	2500	1780	2300	2500	3000	1780	2870	4-1/2	4-1/2	8-3/4	5/8	5/8
BCV300-25-AA	2500	3000	2312	2870	1/0	250	1/0	4/0	4-1/2	3	7-3/8	5/8	1/2
BCV300-40-AA	2500	3000	2312	2870	250	400	4/0	397.5	4-1/2	3	7-3/8	5/8	1/2
BCV300-60-AA	2500	3000	2312	2870	350	600	366.4	477	4-1/2	3	7-3/8	5/8	1/2
BCV300-90-AA	2500	3000	2312	2870	500	900	477	795	4-1/2	3	7-3/8	5/8	1/2
BCV300-125-AA	2500	3000	2312	2870	900	1250	715	1113	4-1/2	3-1/4	7-3/8	5/8	1/2
BCV300-160-AA	2500	3000	2312	2870	1250	1600	1113	1431	4-1/2	4-3/8	9	5/8	5/8
BCV300-200-AA	2500	3000	2312	2870	1500	2000	1272	1780	4-1/2	4-1/2	9-1/8	5/8	5/8
BCV300-250-AA	2500	3000	2312	2870	2000	2500	1780	2300	4-1/2	4-1/2	9-1/8	5/8	5/8
BCV300-300-AA	2500	3000	2312	2870	2500	3000	2312	2870	6	6	10-1/2	5/8	5/8

230 kV Aluminum Bolted Tee & Vee Connectors