

DOSSERT® TYPE UT-AA, UUT-AA U-bolt Tee Connector

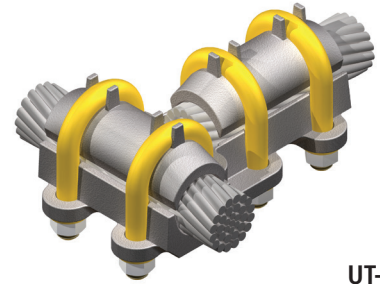
A rugged U-bolt high compression clamp type tee connector which takes a wide range of cable sizes in both the run and tap sections. Designed to withstand high compressive clamping action on all cables within specified cable ranges.

Material

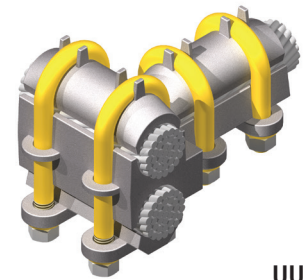
Aluminum Alloy

Hardware

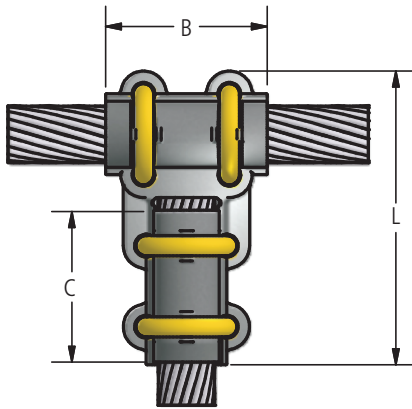
Yellow anodized aluminum U-bolts, nuts, and lockwashers.



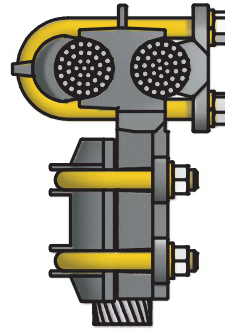
UT-AA



UUT-AA



UT-AA



UUT-AA

continued
→



230 kV Aluminum Bolted Tee & Vee Connectors

DOSSERT® TYPE UT-AA, UUT-AA U-bolt Tee Connector

Ordering Information

CATALOG NUMBER		AAC CONDUCTOR				DIMENSION IN INCHES				
UT-AA	UUT-AA	CABLE RANGE		TAP		B	C	L	U-BOLT	
		MIN	MAX	MIN	MAX				RUN	TAP
UT13-13-AA	UUT13-13-AA	#6 STR	2/0 STR	#6 STR	2/0 STR	3	3	5 3/8	1/2	1/2
UT21-13-AA	UUT21-13-AA	#1 STR	4/0 STR	#6 STR	2/0 STR	3	3	5 1/2	1/2	1/2
UT21-21-AA	UUT21-21-AA	#1 STR	4/0 STR	#1 STR	4/0 STR	3	3	5 1/2	1/2	1/2
UT30-13-AA	UUT30-13-AA	1/0 STR	300 MCM	#6 STR	2/0 STR	3 1/4	3	5 5/8	1/2	1/2
UT30-21-AA	UUT30-21-AA	1/0 STR	300 MCM	#1 STR	4/0 STR	3 1/4	3	5 5/8	1/2	1/2
UT30-30-AA	UUT30-30-AA	1/0 STR	300 MCM	1/0 STR	300 MCM	3 1/4	3 1/4	5 7/8	1/2	1/2
UT50-13-AA	UUT50-13-AA	300 MCM	500 MCM	#6 STR	2/0 STR	3 1/4	3	5 3/4	1/2	1/2
UT50-21-AA	UUT50-21-AA	300 MCM	500 MCM	#1 STR	4/0 STR	3 1/4	3	5 3/4	1/2	1/2
UT50-30-AA	UUT50-30-AA	300 MCM	500 MCM	1/0 STR	300 MCM	3 1/4	3 1/4	6	1/2	1/2
UT50-50-AA	UUT50-50-AA	300 MCM	500 MCM	300 MCM	500 MCM	3 1/4	3 1/4	6	1/2	1/2
UT90-13-AA	UUT90-13-AA	500 MCM	900 MCM	#6 STR	2/0 STR	3 1/2	3	6 1/16	1/2	1/2
UT90-21-AA	UUT90-21-AA	500 MCM	900 MCM	#1 STR	4/0 STR	3 1/2	3	6 1/16	1/2	1/2
UT90-30-AA	UUT90-30-AA	500 MCM	900 MCM	1/0 STR	300 MCM	3 1/2	3 1/4	6 5/16	1/2	1/2
UT90-50-AA	UUT90-50-AA	500 MCM	900 MCM	300 MCM	500 MCM	3 1/2	3 1/4	6 5/16	1/2	1/2
UT90-90-AA	UUT90-90-AA	500 MCM	900 MCM	500 MCM	900 MCM	3 1/2	3 1/2	6 9/16	1/2	1/2
UT100-30-AA	UUT100-30-AA	750 MCM	1000 MCM	1/0 STR	300 MCM	3 1/2	3 1/4	6 3/8	1/2	1/2
UT100-50-AA	UUT100-50-AA	750 MCM	1000 MCM	300 MCM	500 MCM	3 1/2	3 1/4	6 3/8	1/2	1/2
UT100-90-AA	UUT100-90-AA	750 MCM	1000 MCM	500 MCM	900 MCM	3 1/2	3 1/2	6 5/8	1/2	1/2
UT100-100-AA	UUT100-100-AA	750 MCM	1000 MCM	750 MCM	1000 MCM	3 1/2	3 1/2	6 5/8	1/2	1/2
UT125-30-AA	UUT125-30-AA	600 MCM	1250 MCM	1/0 STR	300 MCM	3 1/2	3 1/4	6 1/2	1/2	1/2
UT125-50-AA	UUT125-50-AA	600 MCM	1250 MCM	300 MCM	500 MCM	3 1/2	3 1/4	6 1/2	1/2	1/2
UT125-90-AA	UUT125-90-AA	600 MCM	1250 MCM	500 MCM	900 MCM	3 1/2	3 1/2	6 3/4	1/2	1/2
UT125-100-AA	UUT125-100-AA	600 MCM	1250 MCM	750 MCM	1000 MCM	3 1/2	3 1/2	6 3/4	1/2	1/2
UT125-125-AA	UUT125-125-AA	600 MCM	1250 MCM	600 MCM	1250 MCM	3 1/2	3 1/2	6 3/4	1/2	1/2
UT150-30-AA	UUT150-30-AA	1000 MCM	1500 MCM	1/0 STR	300 MCM	4 1/2	3 1/4	6 7/8	5/8	1/2
UT150-50-AA	UUT150-50-AA	1000 MCM	1500 MCM	300 MCM	500 MCM	4 1/2	3 1/4	6 7/8	5/8	1/2
UT150-90-AA	UUT150-90-AA	1000 MCM	1500 MCM	500 MCM	900 MCM	4 1/2	3 1/2	7 1/8	5/8	1/2
UT150-100-AA	UUT150-100-AA	1000 MCM	1500 MCM	750 MCM	1000 MCM	4 1/2	3 1/2	7 1/8	5/8	1/2
UT150-150-AA	UUT150-150-AA	1000 MCM	1500 MCM	1000 MCM	1500 MCM	4 1/2	4 1/2	8 1/8	5/8	5/8
UT200-30-AA	UUT200-30-AA	1500 MCM	2000 MCM	1/0 STR	300 MCM	4 1/2	3 1/4	7 1/16	5/8	1/2
UT200-50-AA	UUT200-50-AA	1500 MCM	2000 MCM	300 MCM	500 MCM	4 1/2	3 1/4	7 1/16	5/8	1/2
UT200-90-AA	UUT200-90-AA	1500 MCM	2000 MCM	500 MCM	900 MCM	4 1/2	3 1/2	7 5/16	5/8	1/2
UT200-100-AA	UUT200-100-AA	1500 MCM	2000 MCM	750 MCM	1000 MCM	4 1/2	3 1/2	7 5/16	5/8	1/2
UT200-150-AA	UUT200-150-AA	1500 MCM	2000 MCM	1000 MCM	1500 MCM	4 1/2	4 1/2	8 5/16	5/8	5/8
UT200-200-AA	UUT200-200-AA	1500 MCM	2000 MCM	1500 MCM	2000 MCM	4 1/2	4 1/2	8 5/16	5/8	5/8
UT250-50-AA	UUT250-50-AA	2000 MCM	2500 MCM	300 MCM	500 MCM	4 1/2	3 1/4	7 5/16	5/8	1/2
UT250-90-AA	UUT250-90-AA	2000 MCM	2500 MCM	500 MCM	900 MCM	4 1/2	3 1/2	7 9/16	5/8	1/2
UT250-100-AA	UUT250-100-AA	2000 MCM	2500 MCM	750 MCM	1000 MCM	4 1/2	3 1/2	7 9/16	5/8	1/2
UT250-150-AA	UUT250-150-AA	2000 MCM	2500 MCM	1000 MCM	1500 MCM	4 1/2	4 1/2	8 9/16	5/8	5/8
UT250-200-AA	UUT250-200-AA	2000 MCM	2500 MCM	1500 MCM	2000 MCM	4 1/2	4 1/2	8 9/16	5/8	5/8
UT250-250-AA	UUT250-250-AA	2000 MCM	2500 MCM	2000 MCM	2500 MCM	4 1/2	4 1/2	8 9/16	5/8	5/8

230 kV Aluminum Bolted Tee & Vee Connectors

continued
➔



230 kV Aluminum Bolted Tee & Vee Connectors

DOSSERT® TYPE UT-AA, UUT-AA U-bolt Tee Connector

Ordering Information

CATALOG NUMBER		ACSR CONDUCTOR				DIMENSION IN INCHES				
UT-AA	UUT-AA	CABLE RANGE		TAP		B	C	L	U-BOLT	
		MIN	MAX	MIN	MAX				RUN	TAP
UT13-13-AA	UUT13-13-AA	6 (6/1)	2/0 (6/1)	6 (6/1)	2/0 (6/1)	3	3	5 3/8	1/2	1/2
UT21-13-AA	UUT21-13-AA	1 (6/1)	3/0 (6/1)	6 (6/1)	2/0 (6/1)	3	3	5 1/2	1/2	1/2
UT21-21-AA	UUT21-21-AA	1 (6/1)	3/0 (6/1)	1 (6/1)	3/0 (6/1)	3	3	5 1/2	1/2	1/2
UT30-13-AA	UUT30-13-AA	1/0 (6/1)	266.8 (18/1)	6 (6/1)	2/0 (6/1)	3 1/4	3	5 5/8	1/2	1/2
UT30-21-AA	UUT30-21-AA	1/0 (6/1)	266.8 (18/1)	1 (6/1)	3/0 (6/1)	3 1/4	3	5 5/8	1/2	1/2
UT30-30-AA	UUT30-30-AA	1/0 (6/1)	266.8 (18/1)	1/0 (6/1)	266.8 (18/1)	3 1/4	3 1/4	5 7/8	1/2	1/2
UT50-13-AA	UUT50-13-AA	266.8 (6/7)	477 (18/1)	6 (6/1)	2/0 (6/1)	3 1/4	3	5 3/4	1/2	1/2
UT50-21-AA	UUT50-21-AA	266.8 (6/7)	477 (18/1)	1 (6/1)	3/0 (6/1)	3 1/4	3	5 3/4	1/2	1/2
UT50-30-AA	UUT50-30-AA	266.8 (6/7)	477 (18/1)	1/0 (6/1)	266.8 (18/1)	3 1/4	3 1/4	6	1/2	1/2
UT50-50-AA	UUT50-50-AA	266.8 (6/7)	477 (18/1)	266.8 (6/7)	477 (18/1)	3 1/4	3 1/4	6	1/2	1/2
UT90-13-AA	UUT90-13-AA	477 (18/1)	795 (54/7)	6 (6/1)	2/0 (6/1)	3 1/2	3	6 1/16	1/2	1/2
UT90-21-AA	UUT90-21-AA	477 (18/1)	795 (54/7)	1 (6/1)	3/0 (6/1)	3 1/2	3	6 1/16	1/2	1/2
UT90-30-AA	UUT90-30-AA	477 (18/1)	795 (54/7)	1/0 (6/1)	266.8 (18/1)	3 1/2	3 1/4	6 5/16	1/2	1/2
UT90-50-AA	UUT90-50-AA	477 (18/1)	795 (54/7)	266.8 (6/7)	477 (18/1)	3 1/2	3 1/4	6 5/16	1/2	1/2
UT90-90-AA	UUT90-90-AA	477 (18/1)	795 (54/7)	477 (18/1)	795 (54/7)	3 1/2	3 1/2	6 9/16	1/2	1/2
UT100-30-AA	UUT100-30-AA	636 (30/19)	900 (45/7)	1/0 (6/1)	266.8 (18/1)	3 1/2	3 1/4	6 3/8	1/2	1/2
UT100-50-AA	UUT100-50-AA	636 (30/19)	900 (45/7)	266.8 (6/7)	477 (18/1)	3 1/2	3 1/4	6 3/8	1/2	1/2
UT100-90-AA	UUT100-90-AA	636 (30/19)	900 (45/7)	477 (18/1)	795 (54/7)	3 1/2	3 1/2	6 5/8	1/2	1/2
UT100-100-AA	UUT100-100-AA	636 (30/19)	900 (45/7)	636 (30/19)	900 (45/7)	3 1/2	3 1/2	6 5/8	1/2	1/2
UT125-30-AA	UUT125-30-AA	636 (36/1)	1113 (54/19)	1/0 (6/1)	266.8 (18/1)	3 1/2	3 1/4	6 1/2	1/2	1/2
UT125-50-AA	UUT125-50-AA	636 (36/1)	1113 (54/19)	266.8 (6/7)	477 (18/1)	3 1/2	3 1/4	6 1/2	1/2	1/2
UT125-90-AA	UUT125-90-AA	636 (36/1)	1113 (54/19)	477 (18/1)	795 (54/7)	3 1/2	3 1/2	6 3/4	1/2	1/2
UT125-100-AA	UUT125-100-AA	636 (36/1)	1113 (54/19)	636 (30/19)	900 (45/7)	3 1/2	3 1/2	6 3/4	1/2	1/2
UT125-125-AA	UUT125-125-AA	636 (36/1)	1113 (54/19)	636 (36/1)	1113 (54/19)	3 1/2	3 1/2	6 3/4	1/2	1/2
UT150-30-AA	UUT150-30-AA	954 (45/7)	1351.5 (45/7)	1/0 (6/1)	266.8 (18/1)	4 1/2	3 1/4	6 7/8	5/8	1/2
UT150-50-AA	UUT150-50-AA	954 (45/7)	1351.5 (45/7)	266.8 (6/7)	477 (18/1)	4 1/2	3 1/4	6 7/8	5/8	1/2
UT150-90-AA	UUT150-90-AA	954 (45/7)	1351.5 (45/7)	477 (18/1)	795 (54/7)	4 1/2	3 1/2	7 1/8	5/8	1/2
UT150-100-AA	UUT150-100-AA	954 (45/7)	1351.5 (45/7)	636 (30/19)	900 (45/7)	4 1/2	3 1/2	7 1/8	5/8	1/2
UT150-150-AA	UUT150-150-AA	954 (45/7)	1351.5 (45/7)	954 (45/7)	1351.5 (45/7)	4 1/2	4 1/2	8 1/8	5/8	5/8
UT200-30-AA	UUT200-30-AA	1351.3 (45/7)	1780 (84/19)	1/0 (6/1)	266.8 (18/1)	4 1/2	3 1/4	7 1/16	5/8	1/2
UT200-50-AA	UUT200-50-AA	1351.3 (45/7)	1780 (84/19)	266.8 (6/7)	477 (18/1)	4 1/2	3 1/4	7 1/16	5/8	1/2
UT200-90-AA	UUT200-90-AA	1351.3 (45/7)	1780 (84/19)	477 (18/1)	795 (54/7)	4 1/2	3 1/2	7 5/16	5/8	1/2
UT200-100-AA	UUT200-100-AA	1351.3 (45/7)	1780 (84/19)	636 (30/19)	900 (45/7)	4 1/2	3 1/2	7 5/16	5/8	1/2
UT200-150-AA	UUT200-150-AA	1351.3 (45/7)	1780 (84/19)	954 (45/7)	1351.5 (45/7)	4 1/2	4 1/2	8 5/16	5/8	5/8
UT200-200-AA	UUT200-200-AA	1351.3 (45/7)	1780 (84/19)	1351.3 (45/7)	1780 (84/19)	4 1/2	4 1/2	8 5/16	5/8	5/8
UT250-50-AA	UUT250-50-AA	2034 (72/7)	2312 (76/19)	266.8 (6/7)	477 (18/1)	4 1/2	3 1/4	7 5/16	5/8	1/2
UT250-90-AA	UUT250-90-AA	2034 (72/7)	2312 (76/19)	477 (18/1)	795 (54/7)	4 1/2	3 1/2	7 9/16	5/8	1/2
UT250-100-AA	UUT250-100-AA	2034 (72/7)	2312 (76/19)	636 (30/19)	900 (45/7)	4 1/2	3 1/2	7 9/16	5/8	1/2
UT250-150-AA	UUT250-150-AA	2034 (72/7)	2312 (76/19)	954 (45/7)	1351.5 (45/7)	4 1/2	4 1/2	8 9/16	5/8	5/8
UT250-200-AA	UUT250-200-AA	2034 (72/7)	2312 (76/19)	1351.3 (45/7)	1780 (84/19)	4 1/2	4 1/2	8 9/16	5/8	5/8
UT250-250-AA	UUT250-250-AA	2034 (72/7)	2312 (76/19)	2034 (72/7)	2312 (76/19)	4 1/2	4 1/2	8 9/16	5/8	5/8

230 kV Aluminum Bolted Tee & Vee Connectors