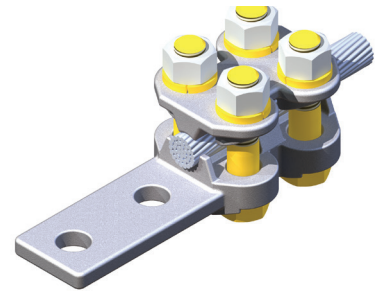


DOSSERT®

TYPE TCV-N-AA, TCVA-N-15-AA, TCVA-N-30-AA, TCVA-N-45-AA, TCVA-N-90-AA NEMA Terminal for Cable Terminal Lug Cable

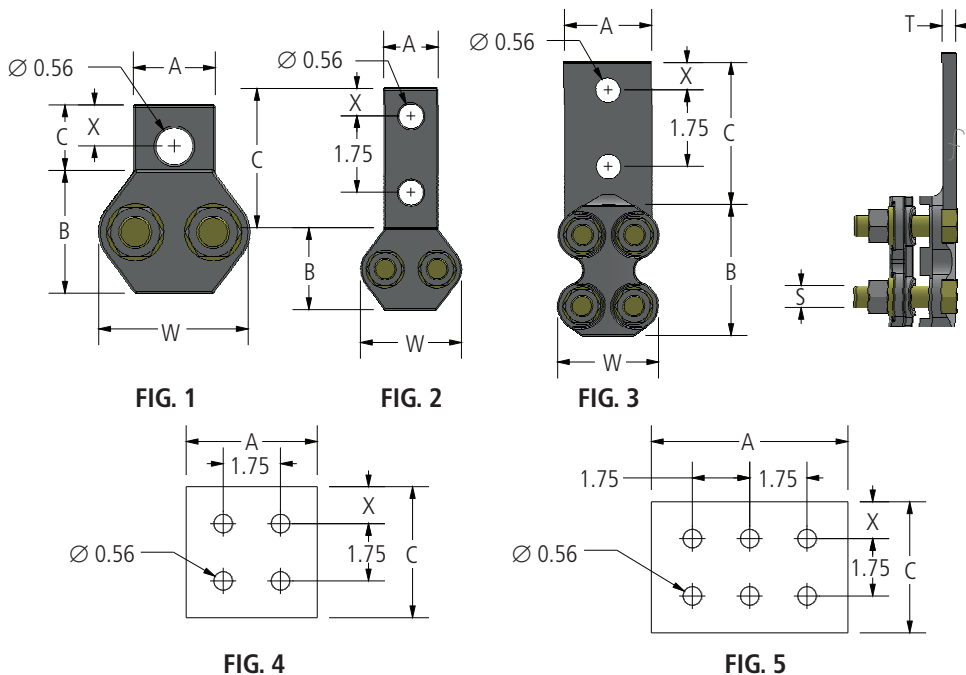
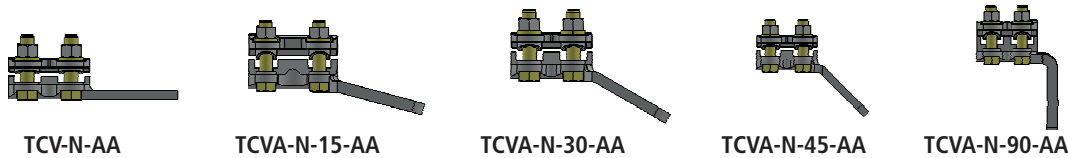


A variable clamp type terminal for connecting a cable to a flat bar bus. Each size terminal accommodates a wide range of cable sizes. Designed to carry the full rated load of the maximum conductor without overheating. Contact pads other than those listed below can be promptly furnished to any specified size or drilling. The variable type terminal exhibits its advantage in that one connector will accommodate a number of cable sizes. This minimizes greatly the problem of stocking various sizes of connectors and the errors which occur in specifying connectors for specific cable sizes.

Material	Hardware
Aluminum Alloy	Yellow anodized aluminum nuts, bolts and lockwashers

Notes

- For Finished Surface on both sides of pad, add "-F" to catalog number. EX: TCV25-4NF-AA.
- For Copper Liner Bond on Tongue, add "-CP" to catalog number. EX: TCV40-4N-AA-CP.
- For Contact Surfaces prefilled with Dostex and packaged in Polyethylene Bag, add "-LP" to catalog number. EX: TCV60-2N-AA-LP.
- For Stainless Steel bolts, lockwashers and Everdur nuts, add "-SSHBN" to catalog number. EX: TCV300-6N4-AA-SSHBN.



DOSSERT®

TYPE TCV-N-AA, TCVA-N-15-AA,
TCVA-N-30-AA, TCVA-45-AA, TCVA-90-AA
NEMA Terminal for Cable Terminal Lug Cable

Ordering Information

CATALOG NUMBER	CABLE RANGE				FIG. NO.	DIMENSIONS IN INCHES						
	ALUMINUM		ACSR			A	B	C	W	X	T	S
	MIN	MAX	MIN	MAX								
TCV10-1-AA	#4 STR	1/0 STR	#4 STR	1/0	1	1.25	1.88	1.00	2.31	0.63	0.31	1/2
TCV10-2N-AA	#4 STR	1/0 STR	#4 STR	1/0	2	1.25	1.88	3.25	2.31	0.63	0.31	1/2
TCV25-2N-AA	1/0	250	1/0	4/0	3	2.00	3.00	3.25	2.38	0.63	0.31	1/2
TCV25-4N-AA	1/0	250	1/0	4/0	4	3.00	3.00	3.25	2.38	0.63	0.31	1/2
TCV25-4N4-AA	1/0	250	1/0	4/0	4	4.00	3.00	4.25	2.38	1.13	0.31	1/2
TCV40-2N-AA	250	400	4/0	397.5	3	2.00	3.00	3.25	2.50	0.63	0.38	1/2
TCV40-4N-AA	250	400	4/0	397.5	4	3.00	3.00	3.25	2.50	0.63	0.38	1/2
TCV40-4N4-AA	250	400	4/0	397.5	4	4.00	3.00	4.25	2.50	1.13	0.38	1/2
TCV60-2N3-AA	350	600	336.4	477	3	2.00	3.00	3.38	2.69	0.63	0.38	1/2
TCV60-2N-AA	350	600	336.4	477	3	1.81	3.00	3.25	2.69	0.63	0.38	1/2
TCV60-4N-AA	350	600	336.4	477	4	3.00	3.00	3.38	2.69	0.63	0.38	1/2
TCV60-4N4-AA	350	600	336.4	477	4	4.00	3.00	4.25	2.69	1.13	0.38	1/2
TCV60-6N4-AA	350	600	336.4	477	5	6.00	3.00	4.25	2.69	1.13	0.44	1/2
TCV90-2N-AA	500	900	477	795	3	2.00	3.00	3.25	2.88	0.63	0.50	1/2
TCV90-4N-AA	500	900	477	795	4	3.00	3.00	3.25	2.88	0.63	0.50	1/2
TCV90-4N4-AA	500	900	477	795	4	4.00	3.00	4.25	2.88	1.13	0.50	1/2
TCV125-2N-AA	900	1250	715	1113	3	2.00	3.25	3.25	3.06	0.63	0.50	1/2
TCV125-4N-AA	900	1250	715	1113	4	3.00	3.25	3.25	3.06	0.63	0.50	1/2
TCV125-4N4-AA	900	1250	715	1113	4	4.00	3.25	4.25	3.06	1.13	0.50	1/2
TCV160-2N-AA	1250	1600	1113	1431	3	2.00	4.38	3.25	3.63	0.63	0.56	5/8
TCV160-4N-AA	1250	1600	1113	1431	4	3.00	4.38	3.25	3.63	0.63	0.56	5/8
TCV160-4N4-AA	1250	1600	1113	1431	4	4.00	4.38	4.25	3.63	1.13	0.56	5/8
TCV160-6N4-AA	1250	1600	1113	1431	5	6.00	4.38	4.25	3.63	1.13	0.56	5/8
TCV200-2N-AA	1500	2000	1272	1780	3	2.00	4.50	3.25	3.88	0.63	0.69	5/8
TCV200-4N-AA	1500	2000	1272	1780	4	3.00	4.50	3.25	3.88	0.63	0.69	5/8
TCV200-4N4-AA	1500	2000	1272	1780	4	4.00	4.50	4.25	3.88	1.13	0.69	5/8
TCV200-6N4-AA	1500	2000	1272	1780	5	6.00	4.50	4.25	3.88	1.13	0.69	5/8
TCV250-4N-AA	2000	2500	1780	2300	4	3.00	4.50	3.25	3.94	0.63	0.75	5/8
TCV250-4N4-AA	2000	2500	1780	2300	4	4.00	4.50	4.25	3.94	1.13	0.75	5/8
TCV250-6N4-AA	2000	2500	1780	2300	5	6.00	4.50	4.25	3.94	1.13	0.75	5/8
TCV300-6N4-AA	2500	3000	1780	2870	5	6.00	6.00	4.25	4.13	1.13	1.00	5/8