

DOSSERT® TYPE 16200 Internal Bolted End Plug

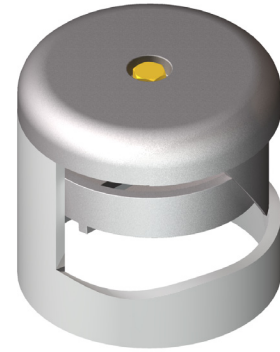
Bolted end plug is designed to wedge on inside of bus tube. End plugs reduce electrostatic losses, seal out moisture and prevent birds from nesting in tube ends. Bolted end plugs can be easily removed for modifications or future expansions.

Material

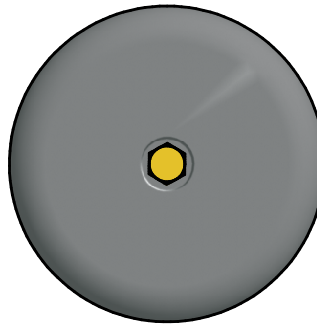
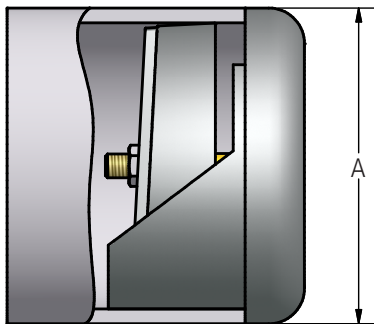
Aluminum Alloy

Hardware

Yellow anodized aluminum bolts, nuts, and lockwashers.



230 kV Aluminum Bolted Corona Bells



Ordering Information

CATALOG NUMBER		CONDUCTOR SIZE	DIMENSIONS IN INCHES	BOLT SIZE	NOMINAL WEIGHT LBS
SCH40	SCH80	SPS & EHPS	A		
16204	16224	1-1/4	1.66	1/4	0.25
16205	16225	1-1/2	1.90	1/4	0.37
16206	16226	2	2.38	1/4	0.45
16207	16227	2-1/2	2.88	3/8	0.64
16208	16228	3	3.50	3/8	0.86
16209	16229	3-1/2	4.00	3/8	0.98
16210	16230	4	4.50	3/8	1.90
16212	16232	5	5.56	3/8	2.30
16213	16233	6	6.62	1/2	4.50