

DOSSERT® TYPE CI-AA SERIES

'Drive Fit' End Plug

'Drive fit' end plugs are designed to be forced into end of bus tube. End plug reduces electrostatic losses, seals out moisture and prevents birds from nesting in tube ends.



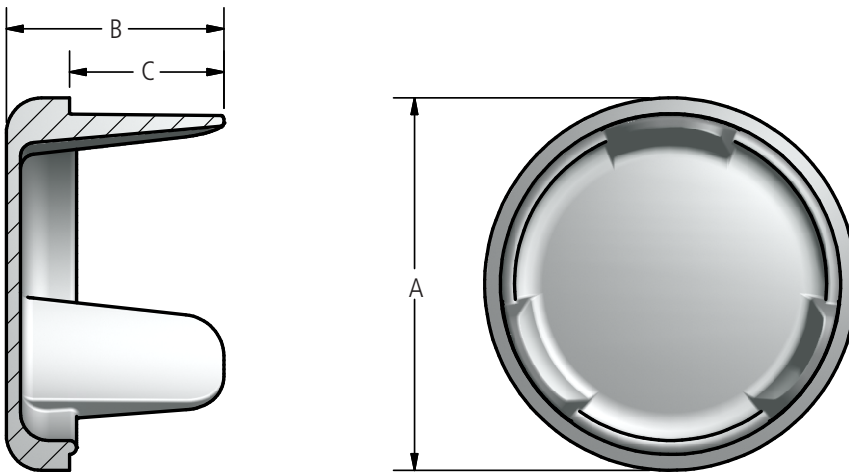
Material

Aluminum Alloy

Ordering Instructions

Step 1: Determine Catalog Number based on the bus conductor being used.

Example: End Plug for 4" schedule 40 bus pipe, the complete catalog number is: CI400-AA.



Ordering Information

CATALOG NUMBER		CONDUCTOR SIZE	DIMENSIONS IN INCHES		
SCH40	SCH80		A	B	C
CI75-AA	CI75E-AA	3/4	1.1	.9	0.50
CI100-AA	CI100E-AA	1	1.3	1.0	0.56
CI125-AA	CI125E-AA	1 1/4	1.7	1.0	0.63
CI150-AA	CI150E-AA	1 1/2	1.9	1.0	0.60
CI200-AA	CI200E-AA	2	2.4	1.3	0.90
CI250-AA	CI250E-AA	2 1/2	2.9	1.6	1.10
CI300-AA	CI300E-AA	3	3.5	1.8	1.10
CI350-AA	CI350E-AA	3 1/2	4.0	2.4	1.60
CI400-AA	CI400E-AA	4	4.5	2.9	2.00
CI500-AA	CI500E-AA	5	5.6	3.4	2.40
CI600-AA	CI600E-AA	6	6.6	3.9	2.80
CI600R-AA 3/8in wall		6 OD	6.0	3.5	2.50
CI800-AA	CI800E-AA	8	8.6	4.0	3.00
CI800R-AA 1/2in wall		8 OD	8.0	4.0	3.00