

DOSSERT® TYPE SCB-F-AA Stud Connector to Flat Bar

Aluminum Connector for Stud to Flat

Material

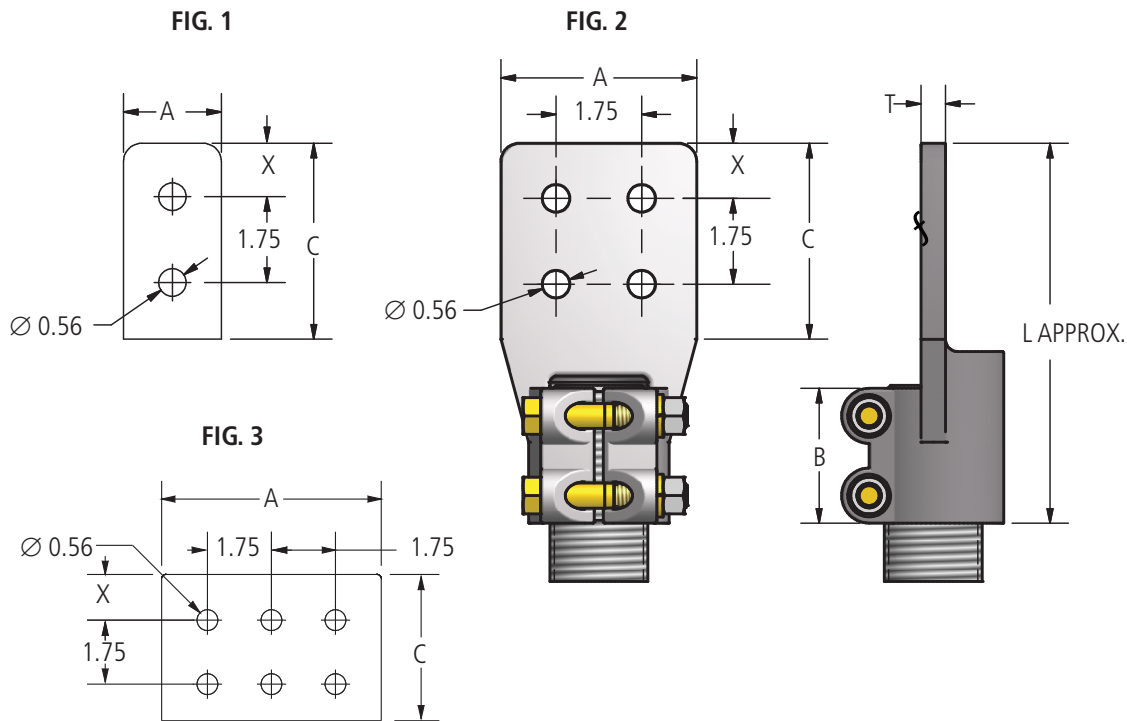
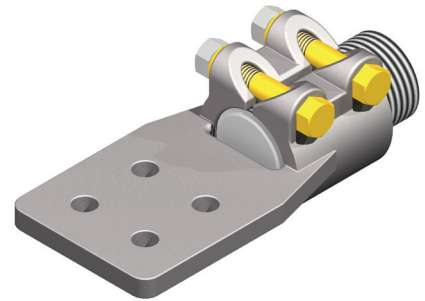
Aluminum Alloy

Hardware

Yellow anodized aluminum bolts, nuts, and lockwashers.

Notes

1. Add suffix "-SN" catalog number for tinned plated order:
SCB200-1/2F-4N4-T12-AA-SN
2. For special thread sizes change the "-T" in the catalog number. EX: for a 1" stud with no threads order: SCB100-1/4F-2N-T0-AA.



DOSSERT®

TYPE SCB-F-AA

Stud Connector to Flat Bar

Ordering Information

CATALOG NUMBER	STUD DIAMETER	THREADS PER INCH	FIGURE NUMBER	DIMENSIONS IN INCHES						BOLT SIZE
				A	B	C	L	T	X	
SCB75-1/4F-2N-T16-AA	3/4	16	1	2	2 1/4	3	5 7/8	1/4	5/8	1/2
SCB75-3/8F-3N-T16-AA	3/4	16	2	3	2 1/4	3	5 7/8	3/8	5/8	1/2
SCB75-3/8F-4N-T16-AA	3/4	16	2	4	2 1/4	3	5 7/8	3/8	5/8	1/2
SCB100-1/4F-2N-T14-AA	1	14	1	2	2 1/4	3	5 7/8	1/4	5/8	1/2
SCB100-1/4F-3N-T14-AA	1	14	2	3	2 1/4	3	5 7/8	1/4	5/8	1/2
SCB100-3/8F-3N-T14-AA	1	14	2	3	2 1/4	3	5 7/8	3/8	5/8	1/2
SCB100-3/8F-4N-T14-AA	1	14	2	4	2 1/4	3	5 7/8	3/8	5/8	1/2
SCB100-3/8F-4N4-T14-AA	1	14	2	4	2 1/4	4	6 7/8	3/8	1 1/8	1/2
SCB112-3/8F-2N-T12-AA	1 1/8	12	1	2	2 1/4	3	5 7/8	3/8	5/8	1/2
SCB112-3/8F-3N-T12-AA	1 1/8	12	2	3	2 1/4	3	5 7/8	3/8	5/8	1/2
SCB112-3/8F-4N-T12-AA	1 1/8	12	2	4	2 1/4	3	5 7/8	3/8	5/8	1/2
SCB112-3/8F-4N4-T12-AA	1 1/8	12	2	4	2 1/4	4	5 7/8	3/8	1 1/8	1/2
SCB112-1/2F-3N-T12-AA	1 1/8	12	2	3	2 1/4	3	5 7/8	1/2	5/8	1/2
SCB112-1/2F-4N-T12-AA	1 1/8	12	2	4	2 1/4	3	5 7/8	1/2	5/8	1/2
SCB112-1/2F-4N4-T12-AA	1 1/8	12	2	4	2 1/4	4	6 7/8	1/2	1 1/8	1/2
SCB125-3/8F-3N-T12-AA	1 1/4	12	2	3	2 1/4	3	5 7/8	3/8	5/8	1/2
SCB125-3/8F-4N-T12-AA	1 1/4	12	2	4	2 1/4	3	5 7/8	3/8	5/8	1/2
SCB125-1/2F-3N-T12-AA	1 1/4	12	2	3	2 1/4	3	5 7/8	1/2	5/8	1/2
SCB125-1/2F-4N-T12-AA	1 1/4	12	2	4	2 1/4	3	5 7/8	1/2	5/8	1/2
SCB125-1/2F-4N4-T12-AA	1 1/4	12	2	4	2 1/4	4	6 7/8	1/2	1 1/8	1/2
SCB150-3/8F-3N-T12-AA	1 1/2	12	2	3	2 1/4	3	6 7/8	3/8	5/8	1/2
SCB150-1/2F-3N-T12-AA	1 1/2	12	2	3	2 1/4	3	5 7/8	1/2	5/8	1/2
SCB150-1/2F-4N-T12-AA	1 1/2	12	2	4	2 1/4	3	5 7/8	1/2	5/8	1/2
SCB150-1/2F-4N4-T12-AA	1 1/2	12	2	4	2 1/4	4	6 7/8	1/2	1 1/8	1/2
SCB150-5/8F-3N-T12-AA	1 1/2	12	2	3	2 1/4	3	6 7/8	5/8	5/8	1/2
SCB150-3/4F-4N-T12-AA	1 1/2	12	2	4	2 1/4	3	6 1/2	3/4	5/8	1/2
SCB150-3/4F-4N4-T12-AA	1 1/2	12	2	4	2 1/4	4	6 1/2	3/4	1 1/8	1/2
SCB150-3/4F-6N4-T12-AA	1 1/2	12	3	6	2 3/4	4	7 3/8	3/4	1 1/8	1/2
SCB157-1/2F-4N4-T0-AA	40 MM	0	2	4	2 1/4	4	7 1/2	1/2	1 1/8	1/2
SCB175-1/2F-4N-T12-AA	1 3/4	12	2	3	2 1/4	3	6 1/2	1/2	1 1/8	1/2
SCB200-1/2F-3N-T12-AA	2	12	2	3	2 3/4	3	6 1/2	1/2	5/8	1/2
SCB200-1/2F-4N-T12-AA	2	12	2	4	2 3/4	3	6 1/2	1/2	5/8	1/2
SCB200-1/2F-4N4-T12-AA	2	12	2	4	2 3/4	4	7 1/2	1/2	1 1/8	1/2
SCB200-3/4F-3N-T12-AA	2	12	2	3	2 3/4	3	6 1/2	3/4	5/8	1/2
SCB200-3/4F-4N-T12-AA	2	12	2	4	2 3/4	3	6 1/2	3/4	5/8	1/2
SCB200-3/4F-4N4-T12-AA	2	12	2	4	2 3/4	4	7 1/2	3/4	1 1/8	1/2
SCB200-1F-3N-T12-AA	2	12	2	3	2 3/4	3	6 1/2	1	5/8	1/2
SCB225-5/8F-4N4-T12-AA	2 1/4	12	2	4	2 3/4	4	7 1/2	5/8	1 1/8	1/2
SCB250-3/4F-3N-T12-AA	2 1/2	12	2	3	2 3/4	3	6 1/2	3/4	5/8	1/2
SCB250-3/4F-4N-T12-AA	2 1/2	12	2	4	2 3/4	3	6 1/2	3/4	5/8	1/2
SCB250-3/4F-4N4-T12-AA	2 1/2	12	2	4	2 3/4	4	7 1/2	3/4	1 1/8	1/2
SCB250-7/8F-4N-T12-AA	2 1/2	12	2	4	2 3/4	3	6 1/2	7/8	5/8	1/2
SCB250-7/8F-4N4-T12-AA	2 1/2	12	2	4	2 3/4	4	7 1/2	7/8	1 1/8	1/2
SCB250-1F-6N4-T12-AA	2 1/2	12	3	6	2 3/4	4	7 1/2	1	1 1/8	1/2
SCB300-1/2F-3N-T12-AA	3	12	2	3	2 3/4	3	7 1/4	1/2	5/8	5/8
SCB300-3/4F-3N-T12-AA	3	12	2	3	2 3/4	3	7 1/4	3/4	5/8	5/8
SCB300-3/4F-4N-T12-AA	3	12	2	4	2 3/4	3	7 1/4	3/4	5/8	5/8
SCB300-3/4F-4N4-T12-AA	3	12	2	4	2 3/4	4	8 1/4	3/4	1 1/8	5/8
SCB300-3/4F-6N4-T12-AA	3	12	3	6	2 3/4	4	8 1/4	3/4	1 1/8	5/8
SCB300-1F-3N-T12-AA	3	12	2	3	2 3/4	3	7 1/4	1	5/8	5/8
SCB300-1F-4N-T12-AA	3	12	2	4	2 3/4	3	7 1/4	1	5/8	5/8
SCB300-1F-4N4-T12-AA	3	12	2	4	3 1/2	4	8 5/8	1	1 1/8	5/8
SCB400-1F-4N4-T10-AA	4	10	2	4	3 1/2	4	8 1/2	1	1 1/8	5/8
SCB400-1F-4N4-T12-AA	4	12	2	4	3 1/2	4	8 1/2	1	1 1/8	5/8
SCB500-1-1/4F-6N4-T12-AA	5	12	3	6	4	4	9 1/8	1 1/4	1 1/8	5/8