

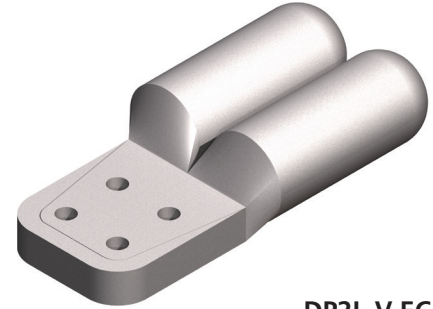
## DOSSERT® TYPE DP2L-N-V-EC

### Substation Compression Terminal

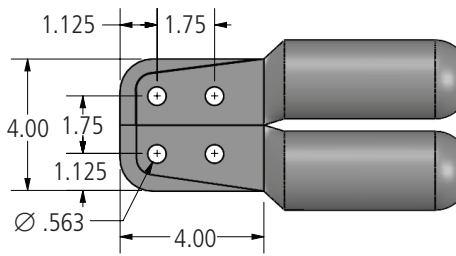
Use for cable to terminal application.

#### Notes

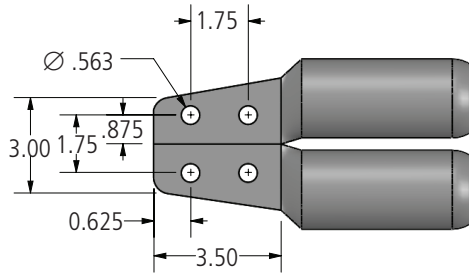
Terminals to be identified with "ACA/Dossert"  
Catalog number or assembly drawing and  
letter, conductor diameter range and die size.



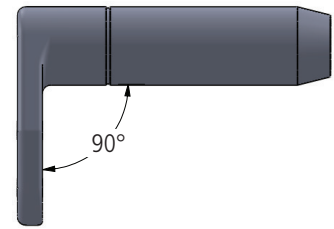
DP2L-V-EC



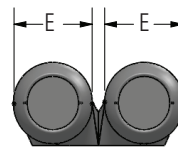
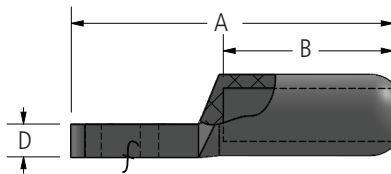
DP2L-4N4-V-EC SERIES



DP2L-4N-V-EC SERIES



DP2LA-N-90-V-EC SERIES



### Ordering Information

CATALOG NUMBER	CONDUCTOR RANGE			DIMENSIONS IN INCHES				DIE SIZE
	IN	AAC	ACSR	A	B	T	E	
DP2L100-4N-V-EC	1.026 - 1.196	795 - 900	715.5(26/7) - 954(54/7)	8.84	4.09	1.00	1.88	30AH
DP2L100-4N4-V-EC				9.46				
DP2L127-4N-V-EC	1.186 - 1.313	954 - 1272	954(54/7) - 1192.5(45/7)	9.19	4.44	1.00	2.12	34AH
DP2L127-4N4-V-EC				9.82				
DP2L151-4N4-V-EC	1.314 - 1.399	1300 - 1431	1192.5(54/19) - 1351.5(45/7)	10.08	4.70	1.00	2.25	36H
DP2L151-4N4-90-V-EC				—				
DP2L160-4N-V-EC	1.399 - 1.500	1500 - 1590	1351.5(45/7) - 1510.5(45/7)	9.69	4.94	1.00	2.38	38AH
DP2L160-4N4-V-EC				10.32				
DP2L180-4N-V-EC	1.501 - 1.630	1750 - 2000	1510.5(54/19) - 1780(84/19)	10.14	—	1.00	2.50	40AH
DP2L180-4N4-V-EC				11.14				
DP2L250-4N4-V-EC	18.02 - 1.857	2500	2300(76/19) - 2312(76/19)	13.88	8.50	1.13	2.75	44AH