

## DOSSERT® TYPE WTC-N-AA

### Welded Tee to Flat

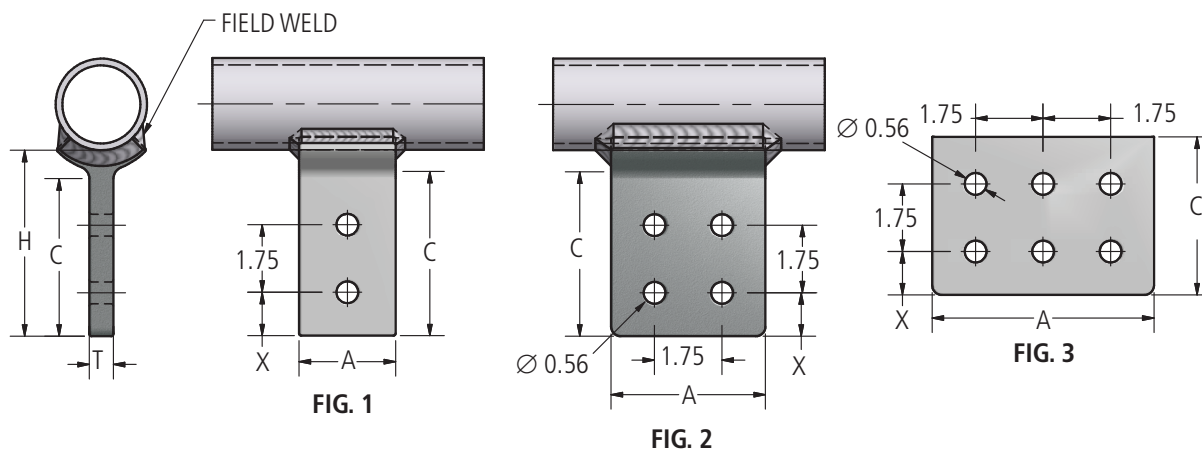
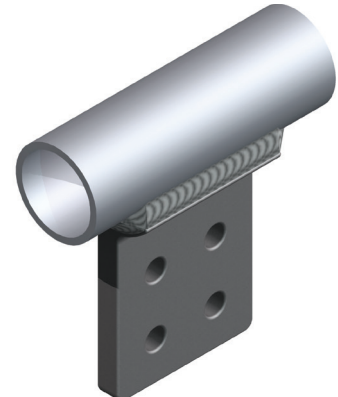
For welding a two, four, or six hole NEMA pad to a pipe.

#### Material

Aluminum Alloy

#### Notes

- For Undrilled holes on pad, add "-U" to catalog number. EX: WTC250-2NU-AA
- For Finish surface on both sides of pad, add "-F" to catalog number. EX: WTC250-2NF-AA.



### Ordering Information

CATALOG NUMBER	SPS RANGE	FIG. NO.	DIMENSIONS IN INCHES				
			A	C	H	T	X
WTC250-2N-AA	1 THRU 2 1/2	1	2.00	3.25	3.88	0.50	0.63
WTC250-4N-AA	1 THRU 2 1/2	2	3.00	3.25	3.88	0.50	0.63
WTC250-4N4-AA	1 THRU 2 1/2	2	4.00	4.25	4.88	0.63	1.13
WTC600-2N-AA	3 THRU 6	1	2.00	3.25	4.00	0.75	0.63
WTC 600-4N-AA	3 THRU 6	2	3.00	3.25	4.00	0.75	0.63
WTC 600-4N4-AA	3 THRU 6	2	4.00	4.25	5.00	0.75	1.13
WTC 600-6N4-AA	3 THRU 6	3	6.00	4.00	5.00	0.75	1.13
WTC800-4N4-AA	8	2	4.00	4.25	5.00	0.75	1.13
WTC800R-2N-AA	8" OD	1	2.00	4.25	5.11	0.75	0.75
WTC800R-4N4-AA	8" OD	2	4.00	4.25	5.00	0.75	1.13