

## DOSSERT®

### TYPE TP, TPA-30, TPA-45, TPA-60, TPA-90 Copper Clamp Terminal for Tubular Bus to Flat

A bolted clamp type terminal for connecting standard pipe size tubular buses to flat surfaces.

#### Material

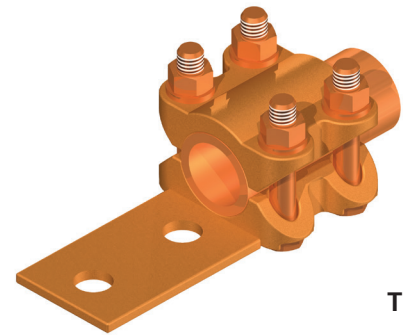
Copper Alloy

#### Hardware

Everdur-nuts, bolts and lock washers.

#### Notes

- Contact pads can be furnished to any specification of size undrilled or drilled to specified hole sizes and center to center dimensions.
- For Electro Tin Plate, add "-SN" to catalog number. EX: TP300-4N-SN
- For Angled Pad, add "A" to prefix and angle to catalog number. EX: TPA350-4N-60
- For Undrilled Pad, add "U" to pad size in catalog number. EX: TP350-4U



TP

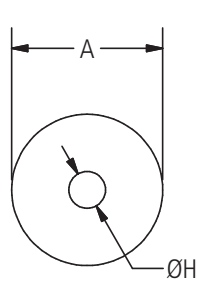
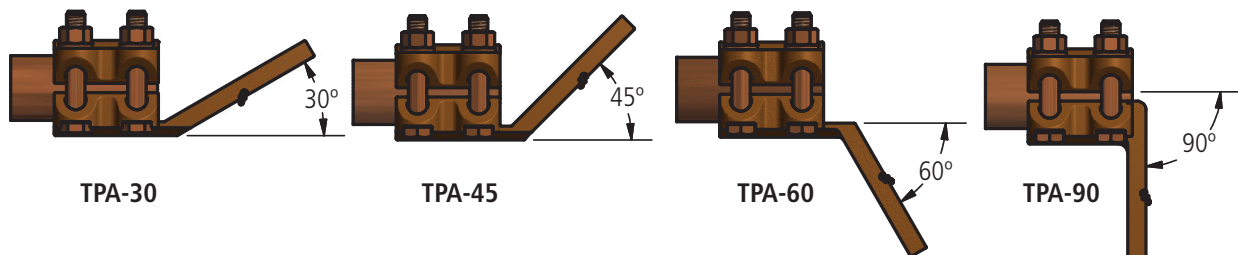


FIG. 1

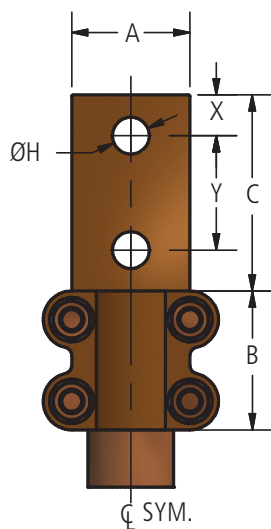


FIG. 2

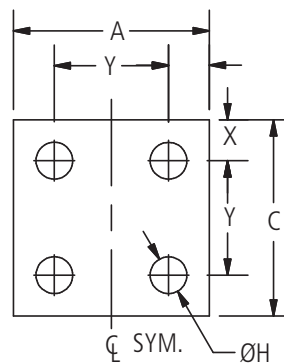
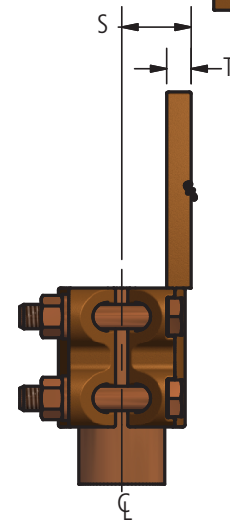


FIG. 3



TP

## DOSSERT®

### TYPE TP, TPA-30, TPA-45, TPA-60, TPA-90 Copper Clamp Terminal for Tubular Bus to Flat

#### Ordering Information

CATALOG NUMBER	SPS	FIG. NO.	DIMENSIONS IN INCHES									BOLT SIZE
			A	C	B	H	T	X	Y	S		
TP25-1	1/4	1	1 1/4	—	2	7/16	1/4	—	—	—	—	3/8
TP25-2	1/4	2	1 1/4	1 7/8	2	7/16	1/4	7/16	1	—	—	3/8
TP25-2N	1/4	2	1 1/2	3	2	9/16	1/4	5/8	1 3/4	11/16	—	3/8
TP38-1	3/8	1	1 1/4	—	2	7/16	1/4	—	—	—	—	3/8
TP38-2	3/8	2	1 1/4	2 1/8	2 1/8	7/16	1/4	7/16	1	3/4	—	3/8
TP38-2N	3/8	2	1 1/2	3 1/4	2 1/8	9/16	1/4	5/8	1 3/4	3/4	—	3/8
TP50-1	1/2	1	1 1/2	—	2	9/16	5/16	—	—	—	—	3/8
TP50-2	1/2	2	1 1/2	2 1/4	2	7/16	5/16	1/2	1 1/4	—	—	3/8
TP50-2N	1/2	2	1 1/2	3	2	9/16	5/16	5/8	1 3/4	7/8	—	3/8
TP75-1	3/4	1	1 3/4	—	2	9/16	3/8	—	—	15/16	—	3/8
TP75-2	3/4	2	1 1/2	2 1/4	2	9/16	3/8	1/2	1 1/4	—	—	3/8
TP75-2N	3/4	2	2	3	2	7/16	3/8	5/8	1 3/4	1	—	3/8
TP100-2	1	2	1 3/4	2 1/4	2 1/8	9/16	3/8	1/2	1 1/4	—	—	3/8
TP100-2N	1	2	1 3/4	3	2 1/8	7/16	3/8	5/8	1 3/4	1 3/8	—	3/8
TP100-4	1	3	2 1/4	2 1/4	2 1/8	9/16	3/8	1/2	1 1/4	1 1/8	—	3/8
TP100-4N	1	3	3	3	2 1/8	7/16	3/8	5/8	1 3/4	1 3/8	—	3/8
TP125-2	1 1/4	2	2 1/4	3	2 1/2	9/16	7/16	3/4	1 1/2	—	—	1/2
TP125-2N	1 1/4	2	2 1/4	3	2 1/2	9/16	7/16	5/8	1 3/4	1 1/2	—	1/2
TP125-4	1 1/4	3	3	3	2 1/2	9/16	7/16	3/4	1 1/2	1 11/32	—	1/2
TP125-4N	1 1/4	3	3	3	2 1/2	9/16	7/16	5/8	1 3/4	1 1/2	—	1/2
TP150-2	1 1/2	2	2 1/2	3 1/4	2 5/8	9/16	1/2	3/4	1 3/4	—	—	1/2
TP150-2N	1 1/2	2	2 1/2	3	2 5/8	9/16	1/2	5/8	1 3/4	1 1/2	—	1/2
TP-150-4	1 1/2	3	3	3	2 5/8	9/16	1/2	3/4	1 1/2	1 9/16	—	1/2
TP150-4N	1 1/2	3	3	3	2 5/8	9/16	1/2	5/8	1 3/4	1 1/2	—	1/2
TP200-2	2	2	2 3/4	3 1/4	2 3/4	9/16	1/2	3/4	1 3/4	—	—	1/2
TP200-2N	2	2	2 3/4	3	2 3/4	9/16	1/2	5/8	1 3/4	1 3/4	—	1/2
TP200-4	2	3	3 1/4	3 1/4	2 3/4	9/16	1/2	3/4	1 3/4	1 13/16	—	1/2
TP-200-4N	2	3	3	3	2 3/4	9/16	1/2	5/8	1 3/4	1 3/4	—	1/2
TP250-2	2 1/2	2	3	3 3/4	2 3/4	9/16	11/16	1	1 3/4	—	—	1/2
TP250-2N	2 1/2	2	3	3	2 3/4	9/16	11/16	5/8	1 3/4	2 1/8	—	1/2
TP250-4	2 1/2	3	3 3/4	3 3/4	2 3/4	9/16	11/16	7/8	2	2 3/16	—	1/2
TP250-4N	2 1/2	3	3	3	2 3/4	9/16	11/16	5/8	1 3/4	2 1/8	—	1/2
TP250-4N4	2 1/2	3	4	4	2 3/4	9/16	11/16	1 1/8	1 3/4	—	—	1/2
TP300-4	3	3	4 1/2	4 1/2	3 1/4	9/16	11/16	7/8	2 3/4	—	—	5/8
TP300-4N	3	3	4	4	3 1/4	9/16	11/16	5/8	1 3/4	2 1/2	—	5/8
TP300-4N4	3	3	4	4	3 1/4	9/16	11/16	1 1/8	1 3/4	2 11/16	—	5/8
TP300-5N4S-7/8T	3	3	5	4	3 1/4	9/16	7/8	1 1/8	1 3/4	—	—	5/8
TP350-4	3 1/2	3	4 3/4	4 3/4	3 1/4	9/16	13/16	7/8	3	2 7/8	—	5/8
TP350 4N	3 1/2	3	3	3	3 1/4	9/16	13/16	5/8	1 3/4	2 5/8	—	5/8
TP350-4N4	3 1/2	3	4	4	3 1/4	9/16	13/16	1 1/8	1 3/4	2 5/8	—	5/8
TP400-4	4	3	5 1/2	5 1/2	3 3/8	11/16	13/16	1 1/8	3 1/4	—	—	5/8
TP400-4N	4	3	3	3	3 3/8	9/16	13/16	5/8	1 3/4	3 1/8	—	5/8