

DOSSERT®

TYPE D2

Copper Screw Terminals For Two Cables To Flat

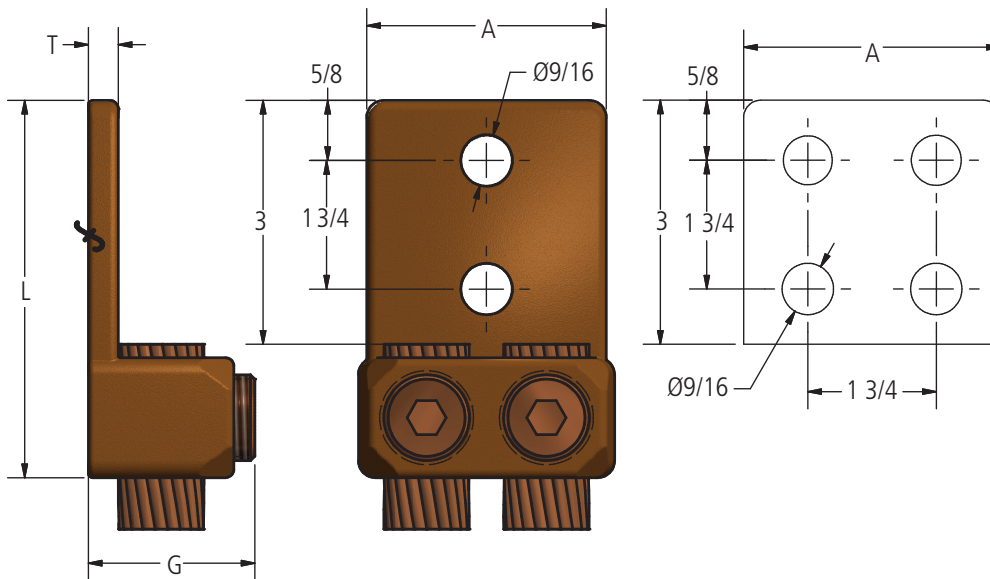
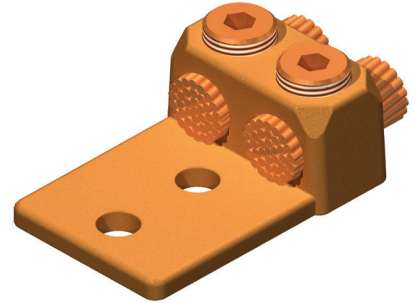
A double conductor lug of the same rugged construction as the Type D. Available with either hex socket or hex head pressure screws. Wide range of conductor sizes limits the need for large stock.

Material

Copper Alloy

Hardware

Zinc Plated Steel Screw



Ordering Information

CATALOG NUMBER		CABLE RANGE		FIG. NO.	DIMENSIONS IN INCHES			
SOCKET	HEX	MIN	MAX		A	G	L	T
D2-25	D2-25H	1/0 STR	250 MCM	1	1 7/8	1 5/16	4 5/16	9/32
D2-50	D2-50H	4/0 STR	500 MCM	1	2 1/2	1 3/4	4 7/8	3/8
D2-100	D2-100H	500 MCM	1000 MCM	2	3 1/4	2 1/4	5 9/16	1/2