

DOSSERT®

TYPE SCB-F Stud Connector to Flat Bar Type

A single or multi-bar connector for connecting one or more flat bars to a threaded or plain stud. Can be furnished to accommodate stud diameters or threads per inch other than listed below.

Material

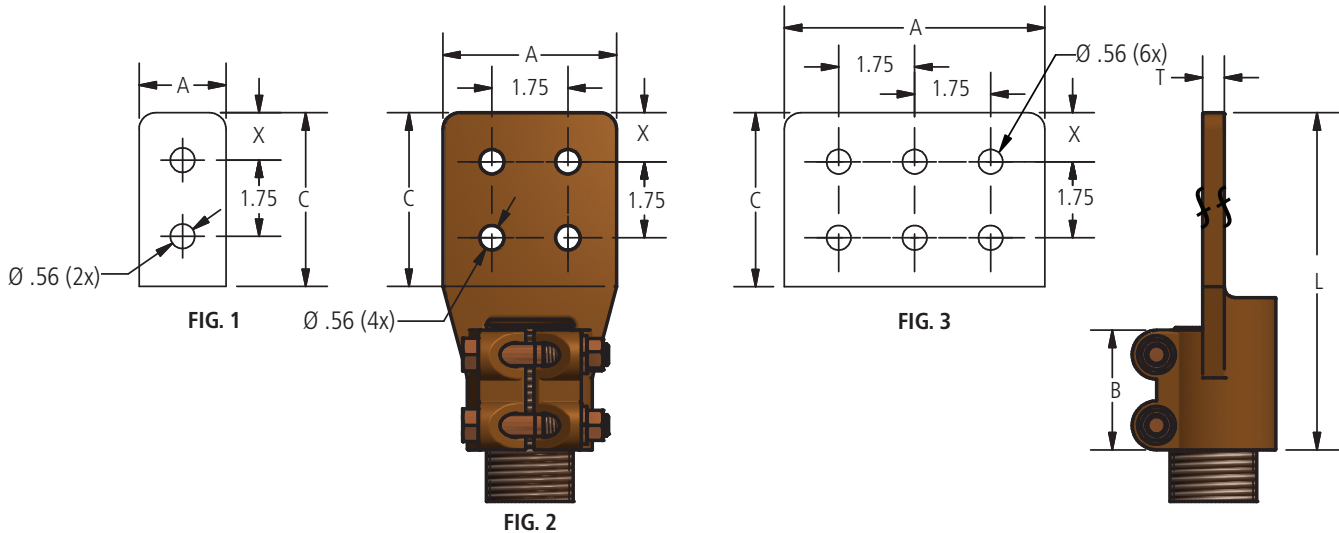
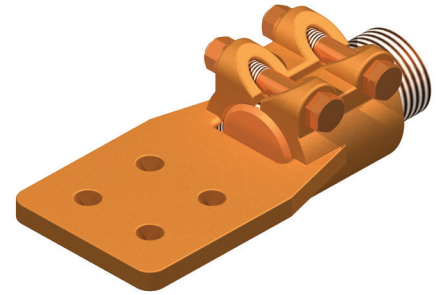
High Conductivity Cast Copper Alloy

Hardware

Everdur bolts, nuts and lockwashers

Note

For Tin Plating, add suffix "-SN" to end of catalog number. EX: SCB200-1/2F-4N4-T12-SN



Ordering Information

CATALOG NUMBER	STUD DIAMETER	THREADS PER INCH	FIG. NO.	DIMENSIONS IN INCHES					
				A	B	C	L	T	X
SCB63-1/4F-2N-T18	5/8	18	1	2	2	3	5 1/2	1/4	5/8
SCB63-1/4F-3N-T18	5/8	18	2	3	2	3	5 1/2	1/4	5/8
SCB63-1/4F-4N-T18	5/8	18	2	4	2	3	5 1/2	1/4	5/8
SCB63-1/4F-4N4-T18	5/8	18	2	4	2	4	6 1/2	1/4	1 1/8
SCB63-3/8F-2N-T18	5/8	18	1	2	2	3	5 1/2	3/8	5/8
SCB63-3/8F-2N-T11	5/8	11	1	2	2	3	5 1/2	3/8	5/8
SCB63-3/8F-3N-T18	5/8	18	2	3	2	3	5 1/2	3/8	5/8
SCB63-3/8F-3N-T11	5/8	11	2	3	2	3	5 1/2	3/8	5/8
SCB63-3/8F-3N-TM16	5/8	M16 x 2.0	2	3	2	3	5 1/2	3/8	5/8
SCB63-3/8F-4N-T18	5/8	18	2	4	2	3	5 1/2	3/8	5/8
SCB63-3/8F-4N4-T18	5/8	18	2	4	2	4	6 1/2	3/8	1 1/8
SCB75-1/4F-2N-T16	3/4	16	1	2	2	3	5 1/2	1/4	5/8
SCB75-1/4F-3N-T16	3/4	16	2	3	2	3	5 1/2	1/4	5/8
SCB75-1/4F-4N-T16	3/4	16	2	4	2	3	5 1/2	1/4	5/8
SCB75-1/4F-4N4-T16	3/4	16	2	4	2	4	6 1/2	1/4	1 1/8
SCB75-3/8F-2N-T16	3/4	16	1	2	2	3	5 1/2	3/8	5/8
SCB75-3/8F-3N-T16	3/4	16	2	3	2	3	5 1/2	3/8	5/8
SCB75-3/8F-4N-T16	3/4	16	2	4	2	3	5 1/2	3/8	5/8
SCB75-3/8F-4N4-T16	3/4	16	2	4	2	4	6 1/2	3/8	1 1/8

DOSSERT®

TYPE SCB-F

Stud Connector to Flat Bar Type

Ordering Information

CATALOG NUMBER	STUD DIAMETER	THREADS PER INCH	FIG. NO.	DIMENSIONS IN INCHES					
				A	B	C	L	T	X
SCB100-1/4F-2N-T14	1	14	1	2	2	3	5 3/8	1/4	5/8
SCB100-1/4F-3N-T14	1	14	2	3	2 1/4	3	5 5/8	1/4	5/8
SCB100-1/4F-4N-T14	1	14	2	4	2 1/4	3	5 5/8	1/4	5/8
SCB100-1/4F-4N4-T14	1	14	2	4	2 1/4	4	6 5/8	1/4	1 1/8
SCB100-1/4F-3N-T14	1	14	2	3	2 1/4	3	5 5/8	1/4	5/8
SCB100-1/4F-4N-T14	1	14	2	4	2 1/4	3	5 5/8	1/4	5/8
SCB100-1/4F-4N4-T14	1	14	2	4	2 1/4	4	6 5/8	1/4	1 1/8
SCB100-3/8F-2N-T14	1	14	1	2	2	3	5 3/8	3/8	5/8
SCB100-3/8F-3N-T14	1	14	2	3	2 1/4	3	5 5/8	3/8	5/8
SCB100-3/8F-4N-T14	1	14	2	4	2 1/4	3	5 5/8	3/8	5/8
SCB100-3/8F-4N4-T14	1	14	2	4	2 1/4	4	6 5/8	3/8	1 1/8
SCB100-1/2F-2N-T14	1	14	1	2	2	3	5 3/8	1/2	5/8
SCB100-1/2F-3N-T14	1	14	2	3	2 1/4	3	5 5/8	1/2	5/8
SCB100-1/2F-4N-T14	1	14	2	4	2 1/4	3	5 5/8	1/2	5/8
SCB100-1/2F-4N4-T14	1	14	2	4	2 1/4	4	6 5/8	1/2	1 1/8
SCB112-1/4F-2N-T12	1 1/8	12	1	2	2	3	5 1/2	1/4	5/8
SCB112-1/4F-3N-T12	1 1/8	12	2	3	2 1/4	3	5 3/4	1/4	5/8
SCB112-1/4F-4N-T12	1 1/8	12	2	4	2 1/4	3	5 3/4	1/4	5/8
SCB112-1/4F-4N4-T12	1 1/8	12	2	4	2 1/4	4	6 3/4	1/4	1 1/8
SCB112-3/8F-2N-T12	1 1/8	12	1	2	2	3	5 1/2	3/8	5/8
SCB112-3/8F-3N-T12	1 1/8	12	2	3	2 1/4	3	5 3/4	3/8	5/8
SCB112-3/8F-4N-T12	1 1/8	12	2	4	2 1/4	3	5 3/4	3/8	5/8
SCB112-3/8F-4N4-T12	1 1/8	12	2	4	2 1/4	4	6 3/4	3/8	1 1/8
SCB112-1/2F-2N-T12	1 1/8	12	1	2	2	3	5 1/2	1/2	5/8
SCB112-1/2F-3N-T12	1 1/8	12	2	3	2 1/4	3	5 3/4	1/2	5/8
SCB112-1/2F-4N-T12	1 1/8	12	2	4	2 1/4	3	5 3/4	1/2	5/8
SCB112-1/2F-4N4-T12	1 1/8	12	2	4	2 1/4	4	6 3/4	1/2	1 1/8
SCB125-1/4F-2N-T12	1 1/4	12	1	2	2	3	5 1/2	1/4	5/8
SCB125-1/4F-3N-T12	1 1/4	12	2	3	2 3/4	3	6 1/4	1/4	5/8
SCB125-1/4F-4N-T12	1 1/4	12	2	4	2 3/4	3	6 1/4	1/4	5/8
SCB125-1/4F-4N4-T12	1 1/4	12	2	4	2 3/4	4	7 1/4	1/4	1 1/8
SCB125-3/8F-2N-T12	1 1/4	12	1	2	2	3	5 1/2	3/8	5/8
SCB125-3/8F-3N-T12	1 1/4	12	2	3	2 3/4	3	6 1/4	3/8	5/8
SCB125-3/8F-4N-T12	1 1/4	12	2	4	2 3/4	3	6 1/4	3/8	5/8
SCB125-3/8F-4N4-T12	1 1/4	12	2	4	2 3/4	4	7 1/4	3/8	1 1/8
SCB125-1/2F-2N-T12	1 1/4	12	1	2	2	3	5 1/2	1/2	5/8
SCB125-1/2F-3N-T12	1 1/4	12	2	3	2 3/4	3	6 1/4	1/2	5/8
SCB125-1/2F-4N-T12	1 1/4	12	2	4	2 3/4	3	6 1/4	1/2	5/8
SCB125-1/2F-4N4-T12	1 1/4	12	2	4	2 3/4	4	7 1/4	1/2	1 1/8
SCB143-1/2F-4N4-T0	1 7/16	0	2	4	2 3/4	4	7 1/4	1/2	1 1/8
SCB150-3/8F-2N-T12	1 1/2	12	1	2	2	3	5 1/2	3/8	5/8
SCB150-3/8F-3N-T12	1 1/2	12	2	3	2 3/4	3	6 1/4	3/8	5/8
SCB150-3/8F-4N-T12	1 1/2	12	2	4	2 3/4	3	6 1/4	3/8	5/8
SCB150-3/8F-4N4-T12	1 1/2	12	2	4	2 3/4	4	7 1/4	3/8	1 1/8
SCB150-1/2F-2N-T12	1 1/2	12	1	2	2	3	5 1/2	1/2	5/8
SCB150-1/2F-3N-T12	1 1/2	12	2	3	2 3/4	3	6 1/4	1/2	5/8
SCB150-1/2F-4N-T12	1 1/2	12	2	4	2 3/4	3	6 1/4	1/2	5/8
SCB150-1/2F-4N4-T12	1 1/2	12	2	4	2 3/4	4	7 1/4	1/2	1 1/8
SCB150-1/2F-6N4-T12	1 1/2	12	3	6	2 3/4	4	7 5/8	1/2	1 1/8
SCB150-3/4F-2N-T12	1 1/2	12	1	2	2	3	5 1/2	3/4	5/8
SCB150-3/4F-3N-T12	1 1/2	12	2	3	2 3/4	3	6 1/4	3/4	5/8
SCB150-3/4F-4N-T12	1 1/2	12	2	4	2 3/4	3	6 1/4	3/4	5/8
SCB150-3/4F-4N4-T12	1 1/2	12	2	4	2 3/4	4	7 1/4	3/4	1 1/8
SCB150-1F-6N4-T12	1 1/2	12	3	6	2 3/4	4	7 5/8	1	1 1/8
SCB157-1/2F-4N4-T0	40MM	0	2	4	2 3/4	4	7 1/4	1/2	1 1/8
SCB175-3/8F-2N-T12	1 3/4	12	1	2	2 3/4	3	5 1/2	3/8	5/8
SCB175-3/8F-3N-T12	1 3/4	12	2	3	2 3/4	3	6 1/4	3/8	5/8
SCB175-3/8F-4N-T12	1 3/4	12	2	4	2 3/4	3	6 1/4	3/8	5/8
SCB175-3/8F-4N4-T12	1 3/4	12	2	4	2 3/4	4	7 1/4	3/8	1 1/8
SCB175-1/2F-2N-T12	1 3/4	12	1	2	2 3/4	3	5 1/2	1/2	5/8
SCB175-1/2F-3N-T12	1 3/4	12	2	3	2 3/4	3	6 1/4	1/2	5/8
SCB175-1/2F-4N-T12	1 3/4	12	2	4	2 3/4	3	6 1/4	1/2	5/8
SCB175-1/2F-4N4-T12	1 3/4	12	2	4	2 3/4	4	7 1/4	1/2	1 1/8

Bronze Terminals, Taps

DOSSERT®

TYPE SCB-F

Stud Connector to Flat Bar Type

Ordering Information

CATALOG NUMBER	STUD DIAMETER	THREADS PER INCH	FIG. NO.	DIMENSIONS IN INCHES					
				A	B	C	L	T	X
SCB175-5/8F-2N-T12	1 3/4	12	1	2	2 3/4	3	5 1/2	5/8	5/8
SCB175-5/8F-3N-T12	1 3/4	12	2	3	2 3/4	3	6 1/4	5/8	5/8
SCB175-5/8F-4N-T12	1 3/4	12	2	4	2 3/4	3	6 1/4	5/8	5/8
SCB175-5/8F-4N4-T12	1 3/4	12	2	4	2 3/4	4	7 1/4	5/8	1 1/8
SCB175-3/4F-2N-T12	1 3/4	12	1	2	2 3/4	3	5 1/2	3/4	5/8
SCB175-3/4F-3N-T12	1 3/4	12	2	3	2 3/4	3	6 1/4	3/4	5/8
SCB175-3/4F-4N-T12	1 3/4	12	2	4	2 3/4	3	6 1/4	3/4	5/8
SCB175-3/4F-4N4-T12	1 3/4	12	2	4	2 3/4	4	7 1/4	3/4	1 1/8
SCB200-3/8F-2N-T12	2	12	1	2	2 3/4	3	5 1/2	3/8	5/8
SCB200-3/8F-3N-T12	2	12	2	3	2 3/4	3	6 1/4	3/8	5/8
SCB200-3/8F-4N-T12	2	12	2	4	2 3/4	3	6 1/4	3/8	5/8
SCB200-3/8F-4N4-T12	2	12	2	4	2 3/4	4	7 1/4	3/8	1 1/8
SCB200-1/2F-2N-T12	2	12	1	2	2 3/4	3	5 1/2	1/2	5/8
SCB200-1/2F-3N-T12	2	12	2	3	2 3/4	3	6 1/4	1/2	5/8
SCB200-1/2F-4N-T12	2	12	2	4	2 3/4	3	6 1/4	1/2	5/8
SCB200-1/2F-4N4-T12	2	12	2	4	2 3/4	4	7 1/4	1/2	1 1/8
SCB200-5/8F-2N-T12	2	12	1	2	2 3/4	3	5 1/2	5/8	5/8
SCB200-5/8F-3N-T12	2	12	2	3	2 3/4	3	6 1/4	5/8	5/8
SCB200-5/8F-4N-T12	2	12	2	4	2 3/4	3	6 1/4	5/8	5/8
SCB200-5/8F-4N4-T12	2	12	2	4	2 3/4	4	7 1/4	5/8	1 1/8
SCB200-5/8F-6N4-T12	2	12	3	6	2 3/4	4	7 5/8	5/8	1 1/8
SCB200-3/4F-2N-T12	2	12	1	2	2 3/4	3	5 1/2	3/4	5/8
SCB200-3/4F-3N-T12	2	12	2	3	2 3/4	3	6 1/4	3/4	5/8
SCB200-3/4F-4N-T12	2	12	2	4	2 3/4	3	6 1/4	3/4	5/8
SCB200-3/4F-4N4-T12	2	12	2	4	2 3/4	4	7 1/4	3/4	1 1/8
SCB200-1F-2N-T12	2	12	1	2	2 3/4	3	5 1/2	1	5/8
SCB200-1F-3N-T12	2	12	2	3	2 3/4	3	6 1/4	1	5/8
SCB200-1F-4N-T12	2	12	2	4	2 3/4	3	6 1/4	1	5/8
SCB200-1F-4N4-T12	2	12	2	4	2 3/4	4	7 1/4	1	1 1/8
SCB200-1F-6N4-T12	2	12	3	6	2 3/4	4	7 5/8	1	1 1/8
SCB225-1/2F-2N-T12	2 1/4	12	1	2	2 3/4	3	5 1/2	1/2	5/8
SCB225-1/2F-3N-T12	2 1/4	12	2	3	2 3/4	3	6 1/4	1/2	5/8
SCB225-1/2F-4N-T12	2 1/4	12	2	4	2 3/4	3	6 1/4	1/2	5/8
SCB225-1/2F-4N4-T12	2 1/4	12	2	4	2 3/4	4	7 1/4	1/2	1 1/8
SCB225-5/8F-2N-T12	2 1/4	12	1	2	2 3/4	3	5 1/2	5/8	5/8
SCB225-5/8F-3N-T12	2 1/4	12	2	3	2 3/4	3	6 1/4	5/8	5/8
SCB225-5/8F-4N-T12	2 1/4	12	2	4	2 3/4	3	6 1/4	5/8	5/8
SCB225-5/8F-4N4-T12	2 1/4	12	2	4	2 3/4	4	7 1/4	5/8	1 1/8
SCB225-3/4F-2N-T12	2 1/4	12	1	2	2 3/4	3	5 1/2	3/4	5/8
SCB225-3/4F-3N-T12	2 1/4	12	2	3	2 3/4	3	6 1/4	3/4	5/8
SCB225-3/4F-4N-T12	2 1/4	12	2	4	2 3/4	3	6 1/4	3/4	5/8
SCB225-3/4F-4N4-T12	2 1/4	12	2	4	2 3/4	4	7 1/4	3/4	1 1/8
SCB225-3/4F-6N4-T12	2 1/4	12	3	6	2 3/4	4	7 5/8	3/4	1 1/8
SCB225-1F-2N-T12	2 1/4	12	1	2	2 3/4	3	5 1/2	1	5/8
SCB225-1F-3N-T12	2 1/4	12	2	3	2 3/4	3	6 1/4	1	5/8
SCB225-1F-4N-T12	2 1/4	12	2	4	2 3/4	3	6 1/4	1	5/8
SCB225-1F-4N4-T12	2 1/4	12	2	4	2 3/4	4	7 1/4	1	1 1/8
SCB250-1/2F-2N-T12	2 1/2	12	1	2	2 3/4	3	6 1/4	1/2	5/8
SCB250-1/2F-3N-T12	2 1/2	12	2	3	2 3/4	3	6 1/4	1/2	5/8
SCB250-1/2F-4N-T12	2 1/2	12	2	4	2 3/4	3	6 1/4	1/2	5/8
SCB250-1/2F-4N4-T12	2 1/2	12	2	4	2 3/4	4	7 1/4	1/2	1 1/8
SCB250-5/8F-2N-T12	2 1/2	12	1	2	2 3/4	3	6 1/4	5/8	5/8
SCB250-5/8F-3N-T12	2 1/2	12	2	3	2 3/4	3	6 1/4	5/8	5/8
SCB250-5/8F-4N-T12	2 1/2	12	2	4	2 3/4	3	6 1/4	5/8	5/8
SCB250-5/8F-4N4-T12	2 1/2	12	2	4	2 3/4	4	7 1/4	5/8	1 1/8
SCB250-3/4F-2N-T12	2 1/2	12	1	2	2 3/4	3	6 1/4	3/4	5/8
SCB250-3/4F-3N-T12	2 1/2	12	2	3	2 3/4	3	6 1/4	3/4	5/8
SCB250-3/4F-4N-T12	2 1/2	12	2	4	2 3/4	3	6 1/4	3/4	5/8
SCB250-3/4F-4N4-T12	2 1/2	12	2	4	2 3/4	4	7 1/4	3/4	1 1/8
SCB250-1F-2N-T12	2 1/2	12	1	2	2 3/4	3	6 1/4	1	5/8
SCB250-1F-3N-T12	2 1/2	12	2	3	2 3/4	3	6 1/4	1	5/8
SCB250-1F-4N-T12	2 1/2	12	2	4	2 3/4	3	6 1/4	1	5/8
SCB250-1F-4N4-T12	2 1/2	12	2	4	2 3/4	4	7 1/4	1	1 1/8

Bronze Terminals, Taps

DOSSERT®

TYPE SCB-F

Stud Connector to Flat Bar Type

Ordering Information

CATALOG NUMBER	STUD DIAMETER	THREADS PER INCH	FIG. NO.	DIMENSIONS IN INCHES					
				A	B	C	L	T	X
SCB300-1/2F-2N-T12	3	12	1	2	3	3	6 1/2	1/2	5/8
SCB300-1/2F-3N-T12	3	12	2	3	3	3	6 1/2	1/2	5/8
SCB300-1/2F-4N-T12	3	12	2	4	3	3	6 1/2	1/2	5/8
SCB300-1/2F-4N4-T12	3	12	2	4	3	4	7 1/2	1/2	1 1/8
SCB300-1/2F-6N4-T12	3	12	3	6	3	4	7 7/8	1/2	1 1/8
SCB300-5/8F-2N-T12	3	12	1	2	3	3	6 1/2	5/8	5/8
SCB300-5/8F-3N-T12	3	12	2	3	3	3	6 1/2	5/8	5/8
SCB300-5/8F-4N-T12	3	12	2	4	3	3	6 1/2	5/8	5/8
SCB300-5/8F-4N4-T12	3	12	2	4	3	4	7 1/2	5/8	1 1/8
SCB300-3/4F-2N-T12	3	12	1	2	3 1/4	3	6 1/2	3/4	5/8
SCB300-3/4F-3N-T12	3	12	2	3	3 1/4	3	6 1/2	3/4	5/8
SCB300-3/4F-4N-T12	3	12	2	4	3 1/4	3	6 1/2	3/4	5/8
SCB300-3/4F-4N4-T12	3	12	2	4	3 1/4	4	7 1/2	3/4	1 1/8
SCB300-1F-2N-T12	3	12	1	2	3 1/4	3	6 1/2	1	5/8
SCB300-1F-3N-T12	3	12	2	3	3 1/4	3	6 1/2	1	5/8
SCB300-1F-4N4-T12	3	12	2	4	3 1/4	4	7 1/2	1	5/8
SCB300-1F-6N4-T12	3	12	3	6	3	4	7 7/8	1	1 1/8
SCB350-1F-6N4-T12	3.5	12	3	6	3 1/2	4 1/4	8 3/8	1	1 1/8
SCB354-1F-6N4-T0	90 MM	0	3	6	3 1/2	4 1/4	8 3/8	1	1 1/8
SCB400-1 1/4F-6N4-T12	4	12	3	6	4	4	9	1 1/4	1 1/8
SCB400-1F-4N4-T12	4	12	2	4	4	4	9	1	1 1/8
SCB400-1F-4N4-T10	4	10	2	4	4	4	9	1	1 1/8
SCB500-3/4F-6N4-T10	5	10	3	6	4	4	9	3/4	1 1/8
SCB500-3/4F-6N4-T12	5	10	3	6	4	4	9	3/4	1 1/8