

DOSSERT®

TYPE DH, DA

Copper Clamp For Flat Bus Bars DH is a four bolt design and DA is a three bolt design.

A clamp for developing high contact pressures between flat copper bus bars. This rugged connector may be used for coupling, crossing, aligning bus or tapping conductors.

Material

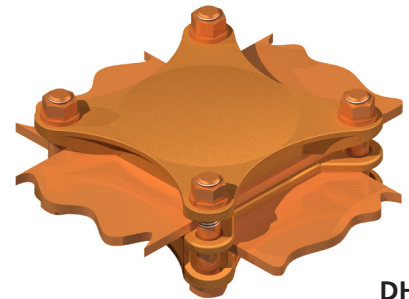
Copper Alloy

Note

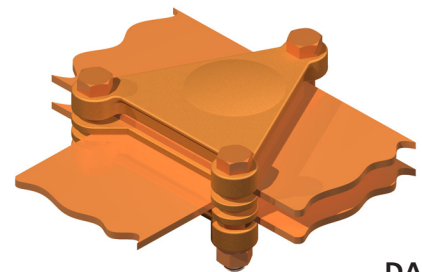
For a 4" main and 4" tap with three bolt pattern order DA44.

Hardware

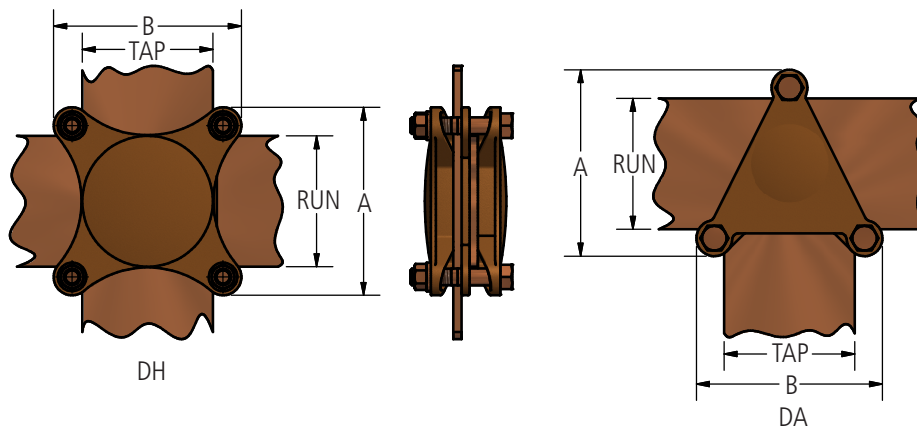
Everdur bolts, nuts and lockwashers



DH



DA



Ordering Information

CATALOG NUMBER		FLAT BUS SIZE		DIMENSIONS IN INCHES		BOLT SIZE
		RUN	TAP	A	B	
DH11	DA11	1	1	2 5/16	2 5/16	3/8
DH21	DA21	2	1	3 5/16	3 5/16	3/8
DH22	DA22	2	2	3 5/16	3 5/16	3/8
DH31	DA31	3	1	4 5/16	2 5/16	3/8
DH32	DA32	3	2	4 5/16	3 5/16	3/8
DH33	DA33	8	3	4 5/16	4 5/16	3/8
DH42	DA42	4	2	5 5/16	3 5/16	3/8
DH43	DA43	4	3	5 3/4	4 3/4	1/2
DH44	DA44	4	4	5 3/4	5 3/4	1/2
DH52	DA52	5	2	6 3/4	3 3/4	1/2
DH53	DA53	5	3	6 3/4	4 3/4	1/2
DH54	DA54	5	4	6 3/4	5 3/4	1/2
DH55	DA55	5	5	7 1/8	7 1/8	5/8
DH62	DA62	6	2	7 3/4	3 3/4	1/2
DH63	DA63	6	3	7 3/4	4 3/4	1/2
DH64	DA64	6	4	7 3/4	5 3/4	1/2
DH65	DA65	6	5	8 1/8	7 1/8	5/8
DH66	DA66	6	6	8 1/8	8 1/8	5/8