

### DOSSERT®

#### TYPE HSSB, HSSC

##### Pedestal Bus Support For Multiple Flat Bar

Type HSSB provides for bolt circle mounting on a 3 inch or 5 inch bolt circle. Type HSSC is a center mounting clamp for horizontal supporting of flat bus. Cap screws are furnished for cap mounting and bolts and nuts are furnished for base mounting. Unless otherwise specified clamps are supplied for cap mounting.

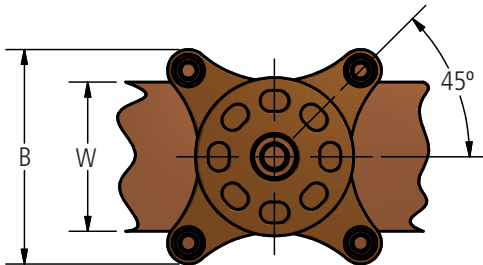
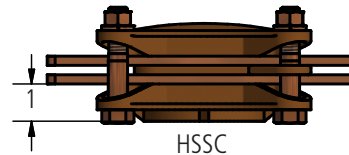
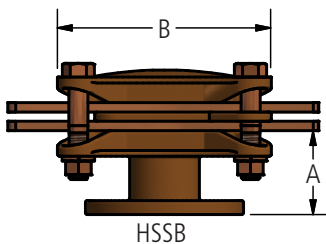
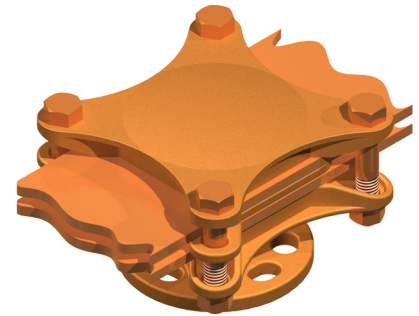
#### Material

Copper Alloy

#### Hardware

Everdur bolts, nuts and lockwashers

Mounting hardware galvanized steel



### Ordering Information

CATALOG NUMBER		BOLT CIRCLE	DIMENSIONS IN INCHES				
HSSB	HSSC		A	B	W	CENTER BOLT	BOLT SIZE
HSSB2-3	HSSC2-3	3	2 1/4	3 5/16	2	3/4	3/8
HSSB2-5	HSSC2-5	5	2	3 5/16	2	3/4	3/8
HSSB3-3	HSSC3-3	3	2 1/4	4 5/16	3	3/4	3/8
HSSB3-5	HSSC3-5	5	2	4 5/16	3	3/4	3/8
HSSB4-3	HSSC4-3	3	2 1/4	5 3/4	4	3/4	1/2
HSSB4-5	HSSC4-5	5	2	5 3/4	4	3/4	1/2
HSSB5-3	HSSC5-3	3	2 1/4	7 1/8	5	3/4	5/8
HSSB5-5	HSSC5-5	5	2	7 1/8	5	3/4	5/8
HSSB6-3	HSSC6-3	3	2 1/4	8 1/8	6	3/4	5/8
HSSB6-5	HSSC6-5	5	2	8 1/8	6	3/4	5/8
HSSC-2	HSSC-2	3	2 1/4	3 5/16	2	3/4	3/8
HSSC-3	HSSC-3	3	2 1/4	4 5/16	3	3/4	3/8
HSSC-4	HSSC-4	3	2 1/4	5 3/4	4	3/4	1/2
HSSC-5	HSSC-5	3	2 1/4	7 1/8	5	3/4	5/8
HSSC-6	HSSC-6	3	2 1/4	8 1/8	6	3/4	5/8