

DOSSERT®

TYPE EP

Clamp Type Elbow For Tubular Bus

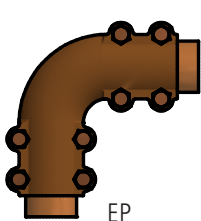
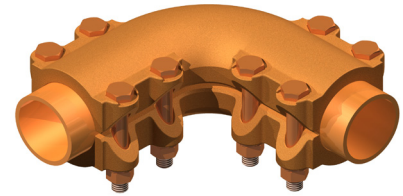
A clamp type elbow for connecting standard pipe size tubular buses at right angles to each other. Conductor bearing areas are accurately machine finished with a special surface to provide good electrical contact and high pull-out strength.

Material

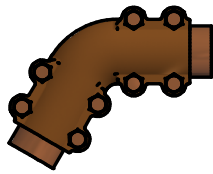
Copper Alloy

Hardware

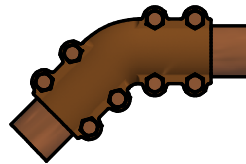
Everdur bolts, nuts and lockwashers



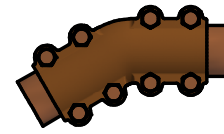
EP
90 DEG



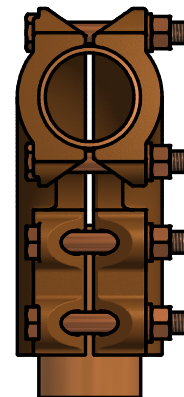
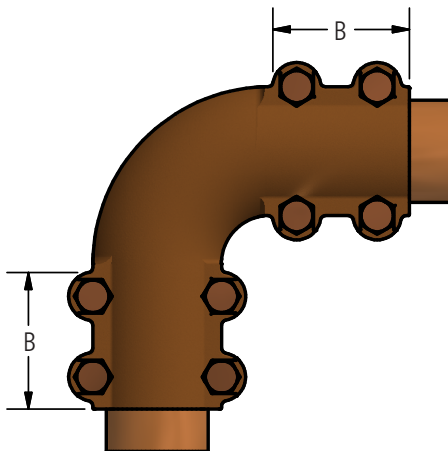
EP-60
60 DEG



EP-45
45 DEG



EP-30
30 DEG



Ordering Information

CATALOG NUMBER				SPS	DIMENSIONS IN INCHES		BOLT SIZE	NUMBER OF BOLTS
90 DEG	60 DEG	45 DEG	30 DEF		B	C		
EP25	EP25-60	EP25-45	EP25-30	1/4	1 1/4	2 1/16	3/8	4
EP38	EP38-60	EP38-45	EP38-30	3/8	1 1/2	2 3/8	3/8	4
EP50	EP50-60	EP50-45	EP50-30	1/2	1 1/2	2 1/2	3/8	6
EP75	EP75-60	EP75-45	EP75-30	3/4	1 3/4	3	3/8	6
EP100	EP100-60	EP100-45	EP100-30	1	2 1/8	3 1/2	3/8	8
EP125	EP125-60	EP125-45	EP125-30	1 1/4	2 1/4	4 1/8	1/2	8
EP150	EP150-60	EP150-45	EP150-30	1 1/2	2 1/2	4 1/2	1/2	8
EP200	EP200-60	EP200-45	EP200-30	2	2 3/4	5	1/2	8
EP250	EP250-60	EP250-45	EP250-30	2 1/2	3	5 1/2	1/2	8
EP300	EP300-60	EP300-45	EP300-30	3	3 1/2	6 1/2	5/8	8
EP350	EP350-60	EP350-45	EP350-30	2 1/2	3 5/8	6 3/4	5/8	8
EP400	EP400-60	EP400-45	EP400-30	4	3 5/8	7	5/8	8

Bronze Elbows
Tee & Vee Connectors