

DOSSERT®

TYPE XBC

Copper Bus Support Coupler

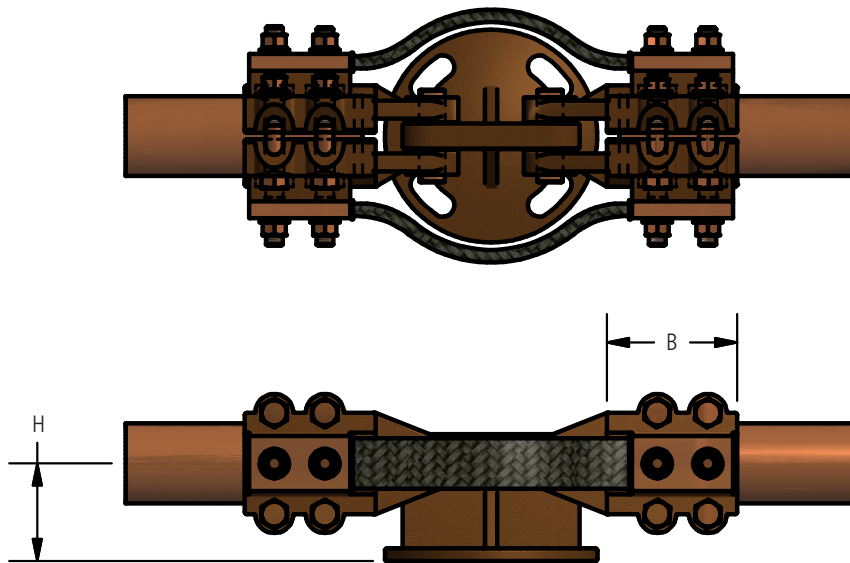
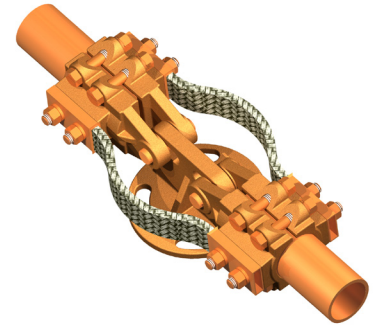
A bus support coupler with a flexible braid linkage designed to conduct the full rated load of the tubular buses and at the same time permit free axial movement of each bus member. The shackle type fitting allows slight angular deviation of the buses from the horizontal where they cannot be kept on a true plane.

Material

Copper Alloy

Hardware

Everdur bolts, nuts, lockwashers, galvanized steel clevis pin, and stainless steel cotter pin



Ordering Information

CATALOG NUMBER	SPS	BOLT CIRCLE	DIMENSIONS IN INCHES		BOLT SIZE
			B	H	
XBC50-3	1/2	3	2 5/8	1 3/4	3/8
XBC50-5	1/2	5	2 5/8	2 1/8	3/8
XBC75-3	3/4	3	3	2	3/8
XBC75-5	3/4	5	3	2 1/4	3/8
XBC100-3	1	3	3	2	3/8
XBC100-5	1	5	3	2 1/4	3/8
XBC125-3	1 1/4	3	3	2 1/4	1/2
XBC125-5	1 1/4	5	3	2 3/8	1/2
XBC150-3	1 1/2	3	3 1/4	2 1/2	1/2
XBC150-5	1 1/2	5	3 1/4	2 1/2	1/2
XBC200-3	2	3	3 1/4	2 3/4	1/2
XBC200-5	2	5	3 1/4	2 3/4	1/2
XBC250-3	2 1/2	3	3 1/4	3 1/8	1/2
XBC250-5	2 1/2	5	3 1/4	3 1/8	1/2
XBC300-3	3	3	3 3/4	3 5/8	5/8
XBC300-5	3	5	3 3/4	3 5/8	5/8
XBC350-3	3 1/2	3	3 3/4	4	5/8
XBC350-5	3 1/2	5	3 3/4	4	5/8
XBC400-3	4	3	4	4 1/2	5/8
XBC400-5	4	5	4	4 1/2	5/8