

DOSSERT®

TYPE VB

V Brace For Strut To Tubular Bus

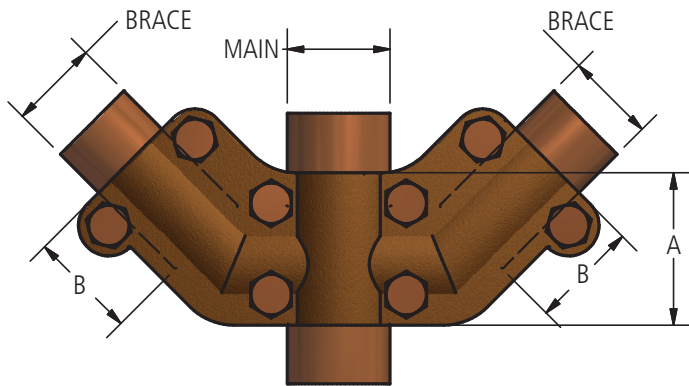
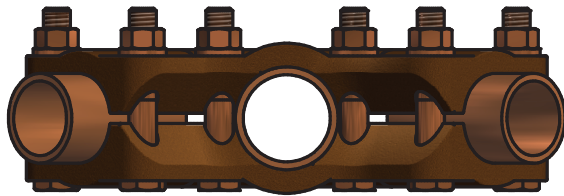
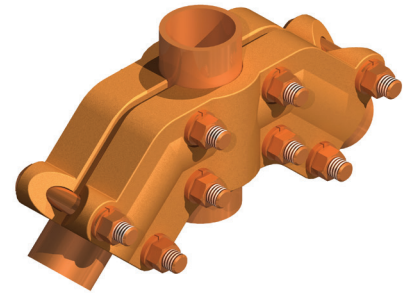
A V-Brace for connecting angular Struts and trusses to tubular buses for Structural support. Eliminates use of Structural steel supports and the required accompanying insulators. With the V-Brace and Angle Brace, various arrangements of trussing may be devised.

Material

Copper Alloy

Hardware

Everdur bolts, nuts and lockwashers



Ordering Information

CATALOG NUMBER	SPS		DIMENSIONS IN INCHES		BOLT SIZE
	MAIN	BRACE	A	B	
VB75-50	3/4	1/2	1 3/4	1 1/2	3/8
VB75-75	3/4	3/4	1 3/4	1 3/4	3/8
VB100-50	1	1/2	1 3/4	1 1/2	3/8
VB100-75	1	3/4	1 3/4	1 3/4	3/8
VB125-75	1 1/4	3/4	1 7/8	1 3/4	3/8
VB125-100	1 1/4	1	1 7/8	1 3/4	3/8
VB150-75	1 1/2	3/4	1 7/8	1 3/4	3/8
VB150-100	1 1/2	1	1 7/8	1 3/4	3/8
VB150-125	1 1/2	1 1/4	2 1/4	2 1/4	1/2
VB200-100	2	1	1 7/8	1 3/4	3/8
VB200-125	2	1 1/4	2 1/4	2 1/4	1/2
VB200-150	2	1 1/2	2 1/2	2 1/2	1/2
VB250-125	2 1/2	1 1/4	2 1/4	2 1/4	1/2
VB250-150	2 1/2	1 1/2	2 1/2	2 1/2	1/2
VB250-200	2 1/2	2	2 3/4	2 3/4	1/2
VB300-125	3	1 1/4	2 1/4	2 1/4	1/2
VB300-150	3	1 1/2	2 1/2	2 1/2	1/2
VB300-200	3	2	2 3/4	2 3/4	1/2
VB350-125	3 1/2	1 1/4	2 3/4	2 1/4	1/2
VB350-150	3 1/2	1 1/2	2 3/4	2 1/2	1/2
VB350-200	3 1/2	2	2 3/4	2 3/4	1/2
VB400-125	4	1 1/4	2 3/4	2 1/4	1/2
VB400-150	4	1 1/2	2 3/4	2 1/2	1/2
VB400-200	4	2	2 3/4	2 3/4	1/2