

DOSSERT® TYPE PSRE

Low Mounting Variable Bus Support

An inexpensive low mounting variable bus support clamp. The wide range of conductor sizes accommodated by a reversible cap minimizes the number of clamps to cover a given range of bus sizes. Furnished complete with cap screws for cap mounting or with bolts, nuts, and lockwashers for base mounting.

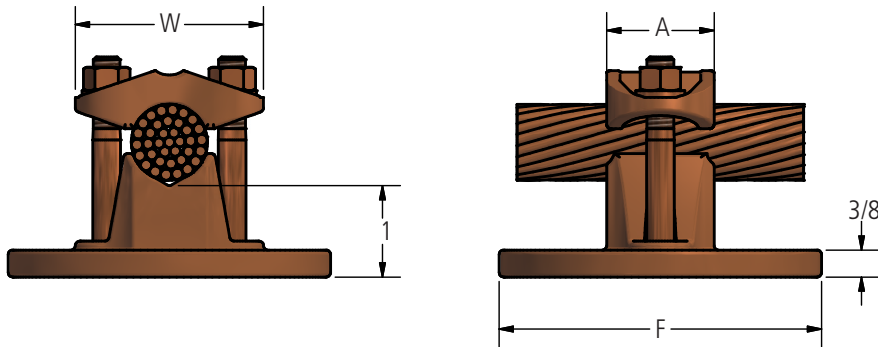
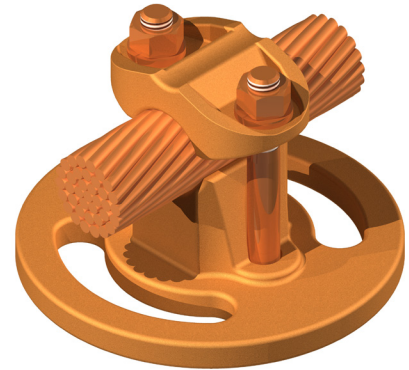
Material

Copper Alloy

Hardware

Everdur bolts, nuts and lockwashers

Mounting hardware galvanized steel



Ordering Information

CATALOG NUMBER	CABLE RANGE		BOLT CIRCLE	DIMENSIONS IN INCHES			
	MIN	MAX		A	F	W	BOLT SIZE
PSRE75-3	1/4	1 1/16	3	1 1/2	4 1/4	2 1/2	3/8
PSRE125-3	13/16	1 11/16	3	1 5/8	4 1/4	3 1/2	1/2
PSRE200-3	1 5/8	2 3/8	3	1 5/8	4 1/4	4 1/4	1/2
PSRE75-5	1/4	1 1/16	5	1 1/2	6 1/4	2 1/2	3/8
PSRE125-5	13/16	1 11/16	5	1 5/8	6 1/4	3 1/2	1/2
PSRE200-5	1 5/8	2 3/8	5	1 5/8	6 1/4	4 1/4	1/2