

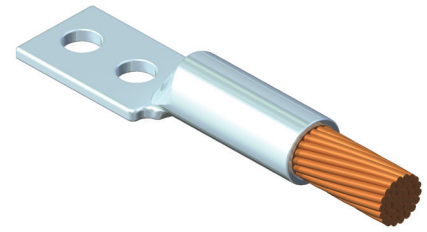
## DOSSERT®

### TYPE DPL, DPLA-45, DPLA-90

Copper Long Barrel Compression Terminal

DPLA-45 is at an angle of 45° and DPLA-90 is at an angle of 90°.

A precision made compression terminal lug for a full range of conductor sizes with 1, 2 and 4 hole pads in the larger sizes. Conductor is secured by indenting the barrel with any standard compression tool made for electrical lugs.



#### Material

Tin plated high conductivity copper alloy

#### Notes

- Terminal pads can be drilled to custom hole sizes and spacing.
- For a 45° angle, add suffix "-45" to end of catalog number and an "A" in the catalog number. EX: DPLA2-1-45
- For a 90° angle, add suffix "-90" to end of catalog number EX: DPLA2-1-90

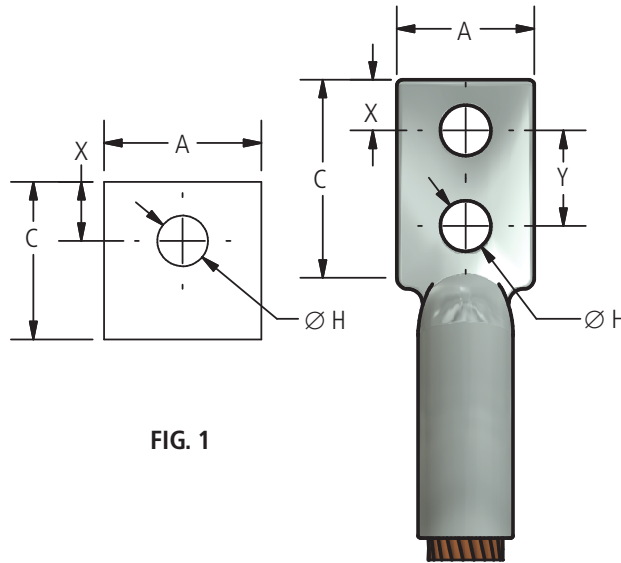
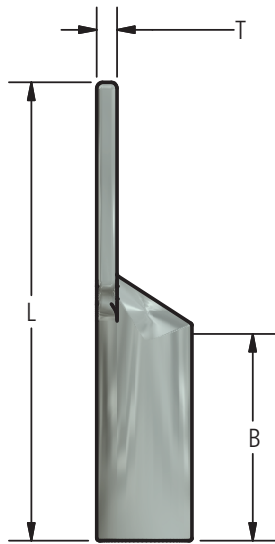


FIG. 1

FIG. 2

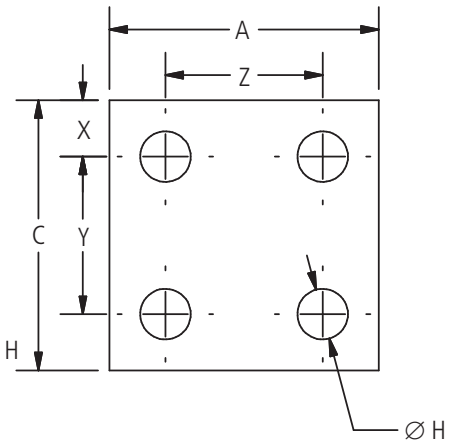


FIG. 3

continued  
→

## DOSSERT®

### TYPE DPL, DPLA-45, DPLA-90 Copper Long Barrel Compression Terminal

#### Ordering Information

CATALOG NUMBER	CABLE SIZE	FIG. NO.	DIMENSIONS IN INCHES									DIE INDEX
			A	B	C	H	L	T	X	Y	Z	
DPL2-1	#6 STR	1	7/16	1 1/8	11/16	9/32	2 1/16	5/64	5/16	-	-	7
DPL2-2	#6 STR	2	7/16	1 1/8	1 5/16	9/32	2 11/16	5/64	5/16	5/8	-	7
DPL2-2N	#6 STR	2	1	1 1/8	3	9/16	5	7/64	5/8	1 3/4	-	7
DPL2-38	#6 STR	1	19/32	1 1/8	13/16	13/32	2 3/16	5/64	3/8	-	-	7
DPL4-1	#4 STR	1	1/2	1 1/8	11/16	9/32	2 3/32	3/32	5/16	-	-	8
DPL4-2	#4 STR	2	1/2	1 1/8	1 5/16	9/32	2 23/32	3/32	5/16	5/8	-	8
DPL4-38	#4 STR	1	19/32	1 1/8	13/16	13/32	2 3/16	3/32	3/8	-	-	8
DPL5-1	#3 STR	1	17/32	1 1/4	3/4	11/32	2 1/4	11/32	3/32	-	-	9
DPL5-2	#3 STR	2	17/32	1 1/4	1 1/2	11/32	3	11/32	3/32	3/4	-	9
DPL6-1	#2 STR	1	5/8	1 1/4	3/4	11/32	2 11/32	3/32	11/32	-	-	10
DPL6-2	#2 STR	2	5/8	1 1/4	1 1/2	11/32	3 3/32	3/32	11/32	3/4	-	10
DPL6-2N	#2 STR	2	13/16	1 1/4	3 1/16	9/16	4 3/4	5/64	5/8	1 3/4	-	10
DPL6-38	#2 STR	1	5/8	1 1/4	7/8	13/32	2 15/32	3/32	13/32	-	-	10
DPL6-50	#2 STR	1	13/16	1 1/4	1 1/4	9/16	3	5/64	5/8	-	-	10
DPL8-1	#1 STR	1	11/16	1 3/8	3/4	11/32	2 3/8	3/32	11/32	-	-	11
DPL8-2	#1 STR	2	11/16	1 3/8	1 5/8	11/32	3 1/4	3/32	11/32	7/8	-	11
DPL8-38	#1 STR	1	11/16	1 3/8	7/8	13/32	2 1/2	3/32	13/32	-	-	11
DPL8-50	#1 STR	1	13/16	1 3/8	1 5/16	9/16	3 3/8	5/64	5/8	-	-	11
DPL10-1	1/0 STR	1	3/4	1 3/8	3/4	11/32	2 9/16	7/64	11/32	-	-	12
DPL10-2	1/0 STR	2	3/4	1 3/8	1 5/8	11/32	3 7/16	7/64	11/32	7/8	-	12
DPL10-2N	1/0 STR	2	13/16	1 3/8	3 1/16	9/16	4 7/8	3/32	5/8	1 3/4	-	12
DPL10-38	1/0 STR	1	3/4	1 3/8	13/16	13/32	2 5/8	7/64	3/8	-	-	12
DPL10-50	1/0 STR	1	13/16	1 3/8	1 1/4	9/16	2 7/8	3/32	5/8	-	-	12
DPL13-1	2/0 STR	1	13/16	1 1/2	13/16	7/16	2 3/4	1/8	3/8	-	-	13
DPL13-2	2/0 STR	2	13/16	1 1/2	1 5/8	11/32	3 9/16	1/8	11/32	7/8	-	13
DPL13-2N	2/0 STR	2	13/16	1 1/2	3 1/16	9/16	5	1/8	5/8	1 3/4	-	13
DPL13-50	2/0 STR	1	13/16	1 1/2	1 1/4	9/16	3 1/4	1/8	5/8	-	-	13
DPL17-1	3/0 Str.	1	29/32	1 1/2	1 1/4	9/16	3 1/32	9/64	5/8	-	-	14
DPL17-2	3/0 Str.	2	29/32	1 1/2	1 13/16	7/16	3 25/32	9/64	3/8	1	-	14
DPL17-2N	3/0 Str.	2	29/32	1 1/2	3 1/16	9/16	5 1/32	9/64	5/8	1 3/4	-	14
DPL21-1	4/0 Str.	1	1	1 5/8	1 1/4	9/16	3 11/32	9/64	5/8	-	-	15
DPL21-2	4/0 Str.	2	1	1 5/8	1 13/16	7/16	4 1/32	9/64	3/8	1	-	15
DPL21-2N	4/0 Str.	2	1	1 5/8	3 1/16	9/16	5 9/32	9/64	5/8	1 3/4	-	15
DPL21-38	4/0 Str.	1	1	1 5/8	1	7/16	3 3/32	9/64	7/16	-	-	15
DPL21-62	4/0 Str.	1	1	1 5/8	1 1/4	21/32	3 7/8	9/64	5/8	-	-	15
DPL25-1	250 MCM	1	1 3/32	1 5/8	1 1/4	9/16	3 11/32	5/32	5/8	-	-	16
DPL25-2	250 MCM	2	1 3/32	1 5/8	1 13/16	7/16	4 1/32	5/32	3/8	1	-	16
DPL25-2N	250 MCM	2	1 3/32	1 5/8	3 1/16	9/16	5 9/32	5/32	5/8	1 3/4	-	16
DPL25-38	250 MCM	1	1 3/32	1 5/8	1	7/16	3 3/32	5/32	7/16	-	-	16
DPL30-1	300 MCM	1	1 3/16	2	1	9/16	3 3/4	5/32	5/8	-	-	17
DPL30-2	300 MCM	2	2	2	2	9/16	4 1/2	5/32	3/8	1 1/16	-	17
DPL30-2N	300 MCM	2	1 3/16	2	3	9/16	5 11/16	5/32	5/8	1 3/4	-	17
DPL30-31	300 MCM	1	1 3/16	2	3/4	11/32	3 3/8	5/32	11/32	-	-	17
DPL30-38	300 MCM	1	1 3/16	2	13/16	7/16	3 7/16	5/32	3/8	-	-	17

continued

## DOSSERT®

### TYPE DPL, DPLA-45, DPLA-90 Copper Long Barrel Compression Terminal

#### Ordering Information

CATALOG NUMBER	CABLE SIZE	FIG. NO.	DIMENSIONS IN INCHES									DIE INDEX
			A	B	C	H	L	T	X	Y	Z	
DPL35-1	350 MCM	1	1 9/32	2	1 1/4	9/16	3 13/16	11/64	5/8	-	-	18
DPL35-2	350 MCM	2	1 9/32	2	1 7/8	7/16	4 9/16	11/64	3/8	1 1/16	-	18
DPL35-2N	350 MCM	2	1 9/32	2	3 3/16	9/16	5 3/4	11/64	5/8	1 3/4	-	18
DPL35-38	350 MCM	1	1 9/32	2	13/16	7/16	3 3/8	11/64	3/8	-	-	18
DPL40-1	400 MCM	1	1 3/8	2 1/8	1 3/8	11/16	4 1/8	3/16	21/32	-	-	19
DPL40-2	400 MCM	2	1 3/8	2 1/8	2	7/16	4 3/4	3/16	7/16	1 1/16	-	19
DPL40-2N	400 MCM	2	1 3/8	2 1/8	3 1/16	9/16	5 13/16	3/16	5/8	1 3/4	-	19
DPL40-38	400 MCM	1	1 3/8	2 1/8	15/16	7/16	3 11/16	3/16	7/16	-	-	19
DPL40-50	400 MCM	1	1 3/8	2 1/8	1 1/4	9/16	3 7/8	3/16	5/8	-	-	19
DPL40-87	400 MCM	1	1 3/8	2 1/8	1 7/8	29/32	4 5/8	3/16	7/8	-	-	19
DPL50-1	500 MCM	1	1 17/32	2 1/4	1 3/8	11/16	4 15/32	7/32	21/32	-	-	20
DPL50-2	500 MCM	2	1 17/32	2 1/4	2	7/16	5 3/32	7/32	7/16	1 1/16	-	20
DPL50-2N	500 MCM	2	1 17/32	2 1/4	3 1/16	9/16	6 5/32	7/32	5/8	1 3/4	-	20
DPL50-50	500 MCM	1	1 17/32	2 1/4	1 1/4	9/16	4 7/32	7/32	5/8	-	-	20
DPL50-87	500 MCM	1	1 17/32	2 1/4	1 7/8	29/32	4 31/32	7/32	7/8	-	-	20
DPL60-1	600 MCM	1	1 23/32	2 11/16	1 13/16	11/16	5 19/32	17/64	7/8	-	-	22
DPL60-2	600 MCM	2	1 23/32	2 11/16	2 1/16	7/16	5 27/32	17/64	7/16	1 1/8	-	22
DPL60-2N	600 MCM	2	1 23/32	2 11/16	3 1/16	9/16	6 29/32	17/64	5/8	1 3/4	-	22
DPL60-50	600 MCM	1	1 23/32	2 11/16	1 1/4	9/16	5 1/32	17/64	5/8	-	-	22
DPL70-1	700 MCM	1	1 27/32	1 5/8	1 7/8	11/16	4	17/64	7/8	-	-	
DPL70-2N	700 MCM	2	1 27/32	2 7/8	3 1/8	9/16	7	17/64	5/8	1 3/4	-	
DPL75-1	750 MCM	1	1 7/8	2 7/8	1 7/8	11/16	5 23/32	17/64	7/8	-	-	24
DPL75-2	750 MCM	2	1 7/8	2 7/8	2 1/4	7/16	6 3/32	17/64	1/2	1 1/8	-	24
DPL75-2N	750 MCM	2	1 7/8	2 7/8	3 1/8	9/16	6 31/32	17/64	5/8	1 3/4	-	24
DPL75-50	750 MCM	1	1 7/8	2 7/8	1 1/4	9/16	5 15/32	17/64	5/8	-	-	24
DPL75-87	750 MCM	1	1 7/8	2 7/8	1 7/8	29/32	5 23/32	17/64	7/8	-	-	24
DPL80-1	800 MCM	1	1 15/16	2 15/16	2	11/16	5 13/16	9/32	15/16	-	-	25
DPL80-2	300 MCM	2	1 15/16	2 15/16	2 1/4	7/16	6 3/16	9/32	1/2	1 1/8	-	25
DPL80-2N	800 MCM	2	1 15/16	2 15/16	3 1/8	9/16	7 1/16	9/32	5/8	1 3/4	-	25
DPL100-1	1000 MCM	1	2 5/32	3	2	11/16	6 3/8	21/64	15/16	-	-	27
DPL100-2	1000 MCM	2	2 5/32	3	2 1/2	9/16	6 5/8	21/64	9/16	1 1/4	-	27
DPL100-2N	1000 MCM	2	2 5/32	3	3 1/8	9/16	7 1/4	21/64	5/8	1 3/4	-	27
DPL100-4	1000 MCM	3	2 5/32	3	2 1/4	7/16	6 3/8	21/64	1/2	1 1/8	1 1/8	27
DPL125-1	1250 MCM	1	2 7/16	3 3/16	2 1/4	11/16	6 5/8	11/32	1 1/16	-	-	29
DPL125-2N	1250 MCM	2	2 7/16	3 3/16	3 1/8	9/16	7 1/2	11/32	5/8	1 3/4	1 3/4	29
DPL150-1	1500 MCM	1	2 11/16	3 3/16	2 3/8	13/16	7 1/4	25/64	1 1/8	-	-	31
DPL150-2	1500 MCM	2	2 11/16	3 3/16	2 5/8	9/16	7 1/2	25/64	9/16	1 3/8	1 3/8	31
DPL150-2N	1500 MCM	2	2 11/16	3 3/16	3 1/8	9/16	7 13/16	25/64	5/8	1 3/4	1 3/4	31
DPL150-4	1500 MCM	3	2 11/16	3 3/16	2 5/8	9/16	7 1/2	25/64	9/16	1 3/8	1 3/8	31
DPL150-4N	1500 MCM	3	2 11/16	3 3/16	3 1/8	9/16	7 13/16	25/64	5/8	1 3/4	1 3/4	31
DPL200-1	2000 MCM	1	3 5/64	3 7/16	2 1/2	13/16	7 3/8	15/32	1 3/16	-	-	34
DPL200-2	2000 MCM	2	3 5/64	3 7/16	2 3/4	9/16	7 5/8	15/32	9/16	1 1/2	1 1/2	34
DPL200-2N	2000 MCM	2	3 5/64	3 7/16	3 1/8	9/16	8	15/32	5/8	1 3/4	1 3/4	34
DPL200-4	2000 MCM	3	3 5/64	3 7/16	2 3/4	9/16	7 5/8	15/32	9/16	1 1/2	1 1/2	34
DPL200-4N	2000 MCM	3	3 5/64	3 7/16	3 1/8	9/16	8	15/32	5/8	1 3/4	1 3/4	34

For information on installation tools, refer to pages 246 and 247 of AFL's Substation catalog.