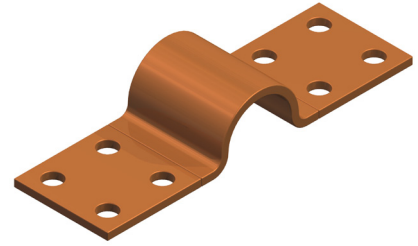


DOSSERT®

TYPE LX

Copper Flexible Connector For Flat to Flat

Laminated of pure copper, this flexible connector permits expansion and contraction due to thermal changes. Bonded ends assure uniform contact surfaces. Variations other than shown can be readily supplied.

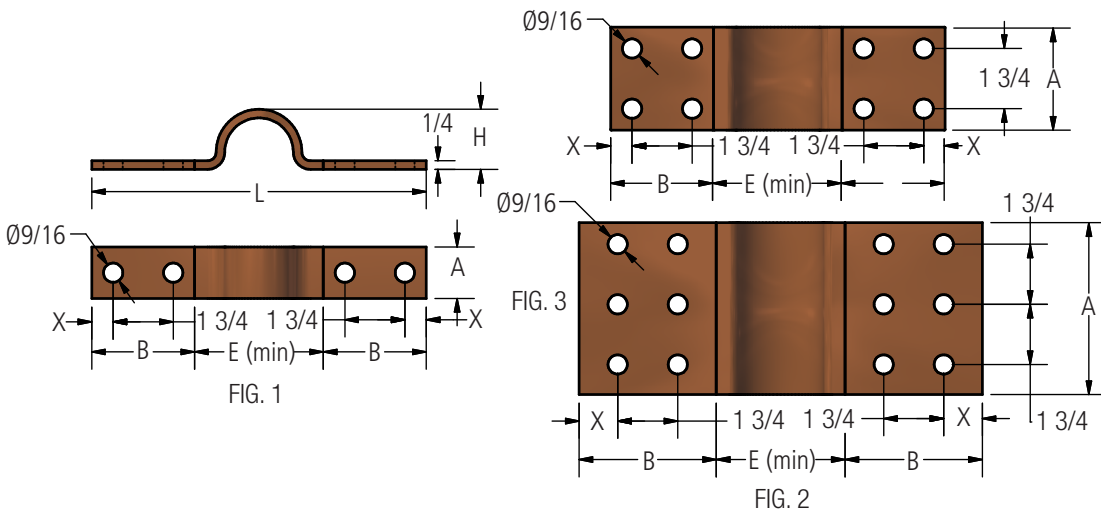


Material

Copper

Note

- Braid may be custom made for any configuration of length, pad size or hole diameter.
- For tin plated contact pads add suffix "-SN" to end of catalog number. Ex: LX200-SN
- For undrilled contact pads add suffix "-U" to end of catalog number. Ex: LX200-U



Ordering Information

CATALOG NUMBER	BAR WIDTH	INDOOR AMPERE RATING*	FIG. NO.	DIMENSIONS IN INCHES					
				A	B	E	H	L	X
LX100	1	366	1	1	3	2 1/4	1	8	5/8
LX150	1 1/2	500	1	1 1/2	3	2 1/2	1 1/2	8 1/2	5/8
LX200	2	647	1	2	3	3 1/2	1 1/2	9 1/2	5/8
LX250	2 1/2	810	1	2 1/2	3	3 3/4	1 3/4	9 3/4	5/8
LX300	3	973	2	3	3	4	1 3/4	10	5/8
LX400	4	1220	2	4	4	4	2	12	1 1/8
LX500	5	1460	3	5	4	4 1/4	2	12 1/4	1 1/8
LX600	6	1660	3	6	4	4 1/4	2 1/4	12 1/4	1 1/8

*Note: A.C. Ampere ratings in still but confined air for maximum temperature rise 30°C above 40°C ambient with major surfaces of braid in horizontal position.

Bronze Braided or Laminated Expansion