

DOSSERT®

TYPE NP, NF Copper Contact Nuts

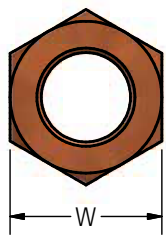
Contact nuts for clamping flat bus bars or terminal pads to threaded studs. For greater contact surface flange nuts, Type NF, provide additional area. Designed to conduct the full rated load of the stud. Large face areas offer a high electrical contact efficiency. All nuts are machined to a high percent full thread to effect maximum thread bearing area.

Material

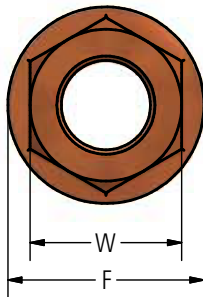
Copper Alloy

Note

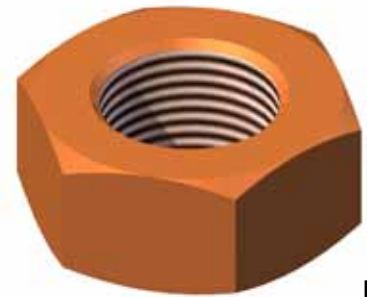
- Other numbers of threads per inch can be furnished for any given stud diameter upon specification.



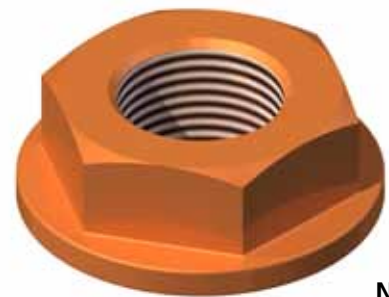
TYPE NP



TYPE NF



NP



NF

Ordering Information

CATALOG NUMBER		STUD DIAMETER	THREADS PER INCH	DIMENSIONS IN INCHES		
NP	NF			F	T	W
NP31	NF31	5/16	18	3/4	1/4	5/8
NP38	NF38	3/8	16	7/8	5/16	3/4
NP50	NF50	1/2	13	1 1/8	3/8	7/8
NP62	NF62	5/8	18	1 3/8	1/2	1 1/16
NP75	NF75	3/4	16	1 5/8	5/8	1 1/4
NP87	NF87	7/8	14	1 13/16	11/16	1 3/8
NP100	NF100	1	14	1 15/16	3/4	1 1/2
NP112	NF112	1 1/8	12	2 1/4	13/16	1 3/4
NP125	NF125	1 1/4	12	2 1/2	7/8	2
NP150	NF150	1 1/2	12	2 15/16	15/16	2 3/8
NP175	NF175	1 3/4	12	2 3/8	1	2 11/16
NP200	NF200	2	12	3 3/4	1 1/8	3
NP250	NF250	2 1/2	12	4 9/26	1 1/4	3 11/16
NP300	NF300	3	12	5 3/8	1 1/2	4 5/16
NP350	NF350	3 1/2	12	6 1/4	1 3/4	5
NP400	NF400	4	12	6 3/4	2	5 1/2