

## DOSSERT® TYPE 1705-EHV, 1706-EHV

### Internal and External Vibration Damper

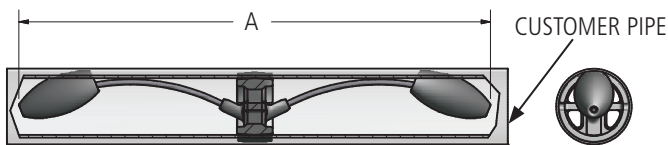
Internal and external damper is designed to be corona free (see chart below for voltage ratings). Internal damper is designed to be welded inside bus, to be corona free, and to present a "clean" appearance to the substation. External damper is to be bolted to outside of tube. External damper can be installed during construction or at a later time to correct vibration problems not originally anticipated.

#### Material

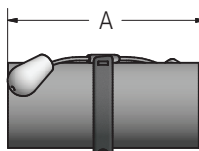
Aluminum Alloy

#### Hardware

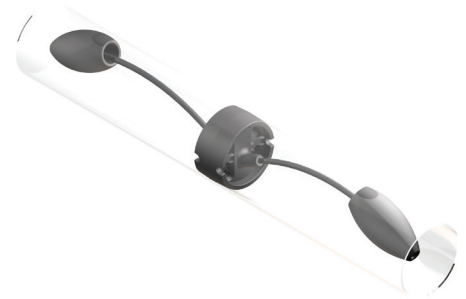
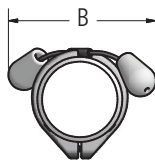
Aluminum nuts, bolts, and lockwashers.



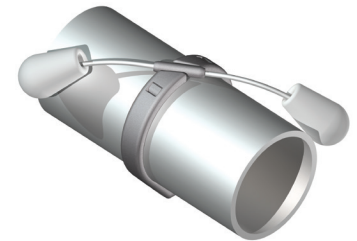
1705



1706-EHV



1705-EHV



1706-EHV

345/500 kV  
Vibration Dampers

### Ordering Information

INTERNAL DAMPER					
CATALOG NUMBER	CONDUCTOR SIZE	DIMENSIONS IN INCHES		NOMINAL WEIGHT IN LBS	
		A		ALUMINUM	TOTAL
1705-504	5 SPS	36.88		2.7	13.3
1705-576	6 EHPS	35.25		3.3	14.0
1705-607	6 SPS	35.25		4.0	14.7
1705-762	8 EHPS	36.88		3.3	13.9
1705-798	8 SPS	36.88		3.4	14.0
1705-700	8" OD x 1/2 WALL	36.88		3.2	13.8
1705-725	8" OD x 3/8 WALL	36.88		3.2	13.8

EXTERNAL DAMPER						
CATALOG NUMBER	VOLTAGE RATING	CONDUCTOR SIZE SPS & EHPS	DIMENSIONS IN INCHES		NOMINAL WEIGHT IN LBS	
			A	B	ALUMINUM	TOTAL
1706-008 EHV	345 kV	3	28.0	12.6	1.9	15.6
1706-009 EHV	345 kV	3 1/2	27.8	13.2	2.0	15.7
1706-010 EHV	345 kV	4	27.6	13.6	2.1	15.8
1706-012 EHV	345 kV	5	26.8	15.4	2.5	16.2
1706-013 EHV	345 kV	6	26.2	17.8	2.7	16.4
1706-014 EHV	500 kV	8" OD	24.8	18.6	3.9	17.6