

## DOSSERT® TYPE CP-V-AA

### Pipe-to-Pipe Coupler

Joins two pipes of the same size together corona free up to 500 kV.

#### Material

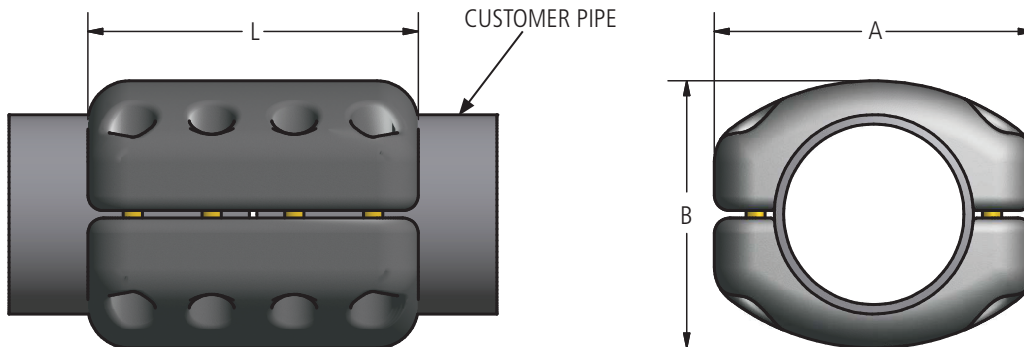
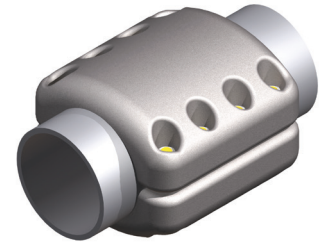
Aluminum Alloy

#### Hardware

Yellow anodized aluminum nuts, bolts, and lockwashers.

#### Notes

- For Grade Five Galvanized Steel Hardware add "-GS5" to catalog number.  
EX: CP400-V-AA-GS5
- For Stainless Steel bolts, lockwashers and Everdur nuts add "-SSHBN" to catalog number. EX:  
CP400-V-AASSHBN



### Ordering Information

CATALOG NUMBER	SPS	DIMENSIONS IN INCHES			BOLT SIZE	NUMBER BOLTS
		A	B	L		
CP250-V-AA	2 1/2	5 3/4	4 7/8	8 1/4	1/2	8
CP300-V-AA	3	7 3/8	5 1/8	10 1/4	5/8	8
CP350-V-AA	3 1/2	7 7/8	6 1/8	10 1/4	5/8	8
CP400-V-AA	4	8 3/8	6 5/8	12 1/4	5/8	8
CP500-V-AA	5	9 3/8	7 7/8	16 1/4	5/8	12
CP600-V-AA	6	10 5/8	8 7/8	11	5/8	8
CP800R-V-AA	8" OD	12	11 1/8	18 1/4	5/8	12
CP800-V-AA	8	11 7/8	10 7/8	18 1/4	5/8	12