

DOSSERT® TYPE CAS-N-V-AA, CAS-N-90-V-AA

Cable Spacer for Two Cables with Four-Hole NEMA Tap

Spacer is designed to be corona free for 500 kV service. Spacer is supplied with break-away head bolts to ensure correct installation.

Material

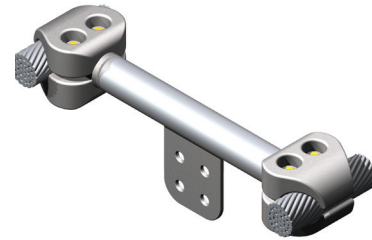
Aluminum Alloy

Hardware

Yellow anodized aluminum nuts, bolts, lockwashers, and rubber retainers.

Notes

For a 90° terminal, add suffix '-90' to catalog number. For a spacer with a max of 795 MCM, an 18" gap, a 4" terminal pad, high voltage at 90°, use CAS79-18-4N4-V-90-AA.

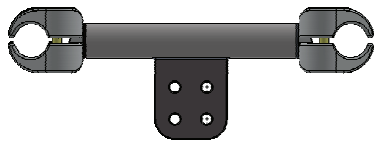


CAS-N-V-AA

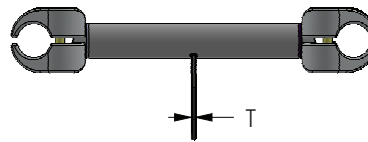


CAS-N-90-V-AA

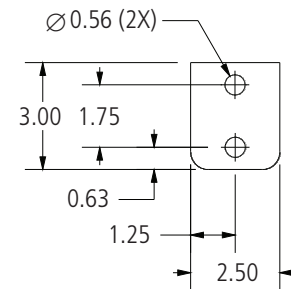
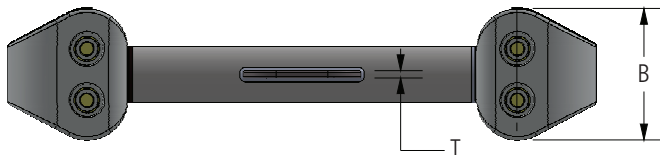
345/500 kV
Spacer Clamps



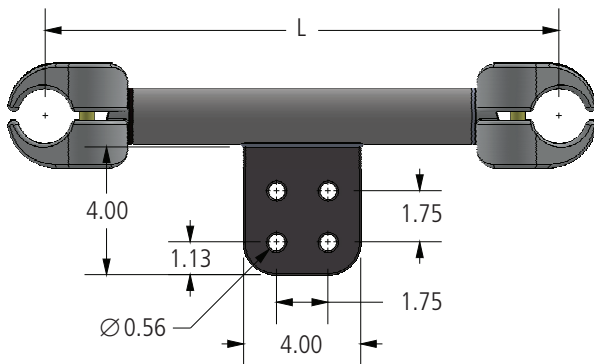
CAS-N-V-AA



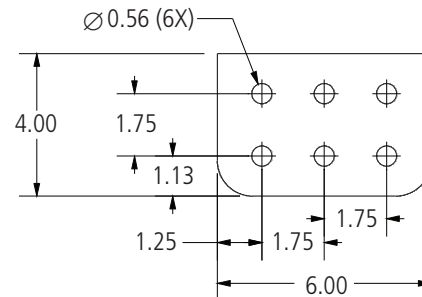
CAS-N-90-V-AA



2N PAD



4N4 PAD



6N4 PAD

DOSSERT® TYPE CAS-N-V-AA, CAS-N-90-V-AA

Cable Spacer for Two Cables with Four-Hole NEMA Tap

Ordering Information

CATALOG NUMBER		CABLE RANGE		DIMENSIONS IN INCHES			NO. OF BOLTS
		AAC RANGE	ACSR	B	L	T	
CAS79-6-4N4-V-AA	CAS79-6-4N4-90-V-AA	750 MCM - 795 MCM	636 (18/1)(24/7)(26/7)	2.00	6.00	0.50	2
CAS79-8-4N4-V-AA	CAS79-8-4N4-90-V-AA	750 MCM - 795 MCM	636 (18/1)(24/7)(26/7)	2.00	8.00	0.50	2
CAS79-10-4N4-V-AA	CAS79-10-4N4-90-V-AA	750 MCM - 795 MCM	636 (18/1)(24/7)(26/7)	2.00	10.00	0.50	2
CAS79-12-4N4-V-AA	CAS79-12-4N4-90-V-AA	750 MCM - 795 MCM	636 (18/1)(24/7)(26/7)	2.00	12.00	0.50	2
CAS79-18-4N4-V-AA	CAS79-18-4N4-90-V-AA	750 MCM - 795 MCM	636 (18/1)(24/7)(26/7)	2.00	18.00	0.50	2
CAS95-6-4N4-V-AA	CAS95-6-4N4-V-AA	800 MCM - 954 MCM	795 (47/7)(24/7)(26/7)	2.00	6.00	0.50	2
CAS95-8-2N-V-AA	CAS95-8-2N-90-V-AA	800 MCM - 954 MCM	795 (47/7)(24/7)(26/7)	2.00	8.00	0.50	2
CAS95-8-4N4-V-AA	CAS95-8-4N4-90-V-AA	800 MCM - 954 MCM	795 (47/7)(24/7)(26/7)	2.00	8.00	0.50	2
CAS95-10-4N4-V-AA	CAS95-10-4N4-90-V-AA	800 MCM - 954 MCM	795 (47/7)(24/7)(26/7)	2.00	10.00	0.50	2
CAS95-12-4N4-V-AA	CAS95-12-4N4-90-V-AA	800 MCM - 954 MCM	795 (47/7)(24/7)(26/7)	2.00	12.00	0.50	2
CAS95-18-4N4-V-AA	CAS95-18-4N4-90-V-AA	800 MCM - 954 MCM	795 (47/7)(24/7)(26/7)	2.00	18.00	0.50	2
CAS103-6-4N4-V-AA	CAS103-6-4N4-90-V-AA	1000 MCM - 1033.5 MCM	954 (45/7)(54/7)	2.00	6.00	0.50	2
CAS103-8-4N4-V-AA	CAS103-8-4N4-90-V-AA	1000 MCM - 1033.5 MCM	954 (45/7)(54/7)	2.00	8.00	0.50	2
CAS103-10-4N4-V-AA	CAS103-10-4N4-V-AA	1000 MCM - 1033.5 MCM	954 (45/7)(54/7)	2.00	10.00	0.50	2
CAS103-12-4N4-V-AA	CAS103-12-4N4-90-V-AA	1000 MCM - 1033.5 MCM	954 (45/7)(54/7)	2.00	12.00	0.50	2
CAS103-18-4N4-V-AA	CAS103-18-4N4-90-V-AA	1000 MCM - 1033.5 MCM	954 (45/7)(54/7)	2.00	18.00	0.50	2
CAS127-6-4N4-V-AA	CAS127-6-4N4-90-V-AA	1113 MCM - 1272 MCM	1033 (54/7), 1113 (45/7)(54/19)	4.50	6.00	0.75	4
CAS127-8-4N4-V-AA	CAS127-8-4N4-90-V-AA	1113 MCM - 1272 MCM	1033 (54/7), 1113 (45/7)(54/19)	4.50	8.00	0.75	4
CAS127-10-4N4-V-AA	CAS127-10-4N4-90-V-AA	1113 MCM - 1272 MCM	1033 (54/7), 1113 (45/7)(54/19)	4.50	10.00	0.75	4
CAS127-12-4N4-V-AA	CAS127-12-4N4-90-V-AA	1113 MCM - 1272 MCM	1033 (54/7), 1113 (45/7)(54/19)	4.50	12.00	0.75	4
CAS127-18-4N4-V-AA	CAS127-18-4N4-90-V-AA	1113 MCM - 1272 MCM	1033 (54/7), 1113 (45/7)(54/19)	4.50	18.00	0.75	4
CAS140-8-4N4-V-AA	CAS140-8-4N4-90-V-AA	1300 MCM-1400 MCM	1272 (45/7)(54/19)	4.50	8.00	0.75	4
CAS140-18-4N4-V-AA	CAS140-18-4N4-90-V-AA	1300 MCM-1400 MCM	1272 (45/7)(54/19)	4.50	18.00	0.75	4
CAS143-6-4N4-V-AA	CAS143-6-4N4-90-V-AA	1300 MCM - 1431 MCM	1272 (45/7)(54/19)	4.50	6.00	0.75	4
CAS143-8-4N4-V-AA	CAS143-8-4N4-90-V-AA	1300 MCM - 1431 MCM	1272 (45/7)(54/19)	4.50	8.00	0.75	4
CAS143-10-4N4-V-AA	CAS143-10-4N4-90-V-AA	1300 MCM - 1431 MCM	1272 (45/7)(54/19)	4.50	10.00	0.75	4
CAS143-12-4N4-V-AA	CAS143-12-4N4-90-V-AA	1300 MCM - 1431 MCM	1272 (45/7)(54/19)	4.50	12.00	0.75	4
CAS143-18-4N4-V-AA	CAS143-18-4N4-90-V-AA	1300 MCM - 1431 MCM	1272 (45/7)(54/19)	4.50	18.00	0.75	4
CAS160-6-4N4-V-AA	CAS160-6-4N4-90-V-AA	1500 MCM - 1600 MCM	1431 (45/7)(54/19)	4.50	6.00	0.75	4
CAS160-6.5-4N4-V-AA	CAS160-6.5-4N4-90-V-AA	1500 MCM - 1600 MCM	1431 (45/7)(54/19)	4.50	6.50	0.75	4
CAS160-8-4N4-V-AA	CAS160-8-4N4-90-V-AA	1500 MCM - 1600 MCM	1431 (45/7)(54/19)	4.50	8.00	0.75	4
CAS160-10-4N4-V-AA	CAS160-10-4N4-90-V-AA	1500 MCM - 1600 MCM	1431 (45/7)(54/19)	4.50	10.00	0.75	4
CAS160-11-4N4-V-AA	CAS160-11-4N4-90-V-AA	1500 MCM - 1600 MCM	1431 (45/7)(54/19)	4.50	11.00	0.75	4

DOSSERT® TYPE CAS-N-V-AA, CAS-N-90-V-AA

Cable Spacer for Two Cables with Four-Hole NEMA Tap
Ordering Information

CATALOG NUMBER		CABLE RANGE		DIMENSIONS IN INCHES			NO. OF BOLTS
		AAC RANGE	ACSR	B	L	T	
CAS160-12-4N4-V-AA	CAS160-12-4N4-90-V-AA	1500 MCM - 1600 MCM	1431 (45/7)(54/19)	4.50	12.00	0.75	4
CAS160-18-4N4-V-AA	CAS160-18-4N4-90-V-AA	1500 MCM - 1600 MCM	1431 (45/7)(54/19)	4.50	18.00	0.75	4
CAS180-6-4N4-V-AA	CAS180-6-4N4-90-V-AA	1700 MCM - 1800 MCM	1590 (45/7)(54/19)	4.50	6.00	0.75	4
CAS180-8-4N4-V-AA	CAS180-8-4N4-90-V-AA	1700 MCM - 1800 MCM	1590 (45/7)(54/19)	4.50	8.00	0.75	4
CAS180-10-4N4-V-AA	CAS180-10-4N4-90-V-AA	1700 MCM - 1800 MCM	1590 (45/7)(54/19)	4.50	10.00	0.75	4
CAS180-12-4N4-V-AA	CAS180-12-4N4-90-V-AA	1700 MCM - 1800 MCM	1590 (45/7)(54/19)	4.50	12.00	0.75	4
CAS180-18-4N4-V-AA	CAS180-18-4N4-90-V-AA	1700 MCM - 1800 MCM	1590 (45/7)(54/19)	4.50	18.00	0.75	4
CAS200-8-4N4-V-AA	CAS200-8-4N4-90-V-AA	2000 MCM	1780(84/19)	4.50	8.00	0.75	4
CAS200-18-4N4-V-AA	CAS200-18-4N4-90-V-AA	2000 MCM	1780(84/19)	4.50	18.00	0.75	4
CAS205-6-4N4-V-AA	CAS205-6-4N4-90-V-AA	2000 MCM - 2049 MCM	1780 (84/19) 2034 (72/7)	4.50	6.00	0.75	4
CAS205-8-4N4-V-AA	CAS205-8-4N4-90-V-AA	2000 MCM - 2049 MCM	1780 (84/19) 2034 (72/7)	4.50	8.00	0.63	4
CAS205-10-4N4-V-AA	CAS205-10-4N4-90-V-AA	2000 MCM - 2049 MCM	1780 (84/19) 2034 (72/7)	4.50	10.00	0.75	4
CAS205-12-4N4-V-AA	CAS205-12-4N4-90-V-AA	2000 MCM - 2049 MCM	1780 (84/19) 2034 (72/7)	4.50	12.00	0.75	4
CAS205-13-4N4-V-AA	CAS205-13-4N4-90-V-AA	2000 MCM - 2049 MCM	1780 (84/19) 2034 (72/7)	4.50	13.00	0.75	4
CAS205-18-4N4-V-AA	CAS205-18-4N4-90-V-AA	2000 MCM - 2049 MCM	1780 (84/19) 2034 (72/7)	4.50	18.00	0.75	4
CAS250-6-4N4-V-AA	CAS250-6-4N4-90-V-AA	2250 MCM - 2500 MCM	2156 (84/19)	4.50	6.00	0.75	4
CAS250-8-4N4-V-AA	CAS250-8-4N4-90-V-AA	2250 MCM - 2500 MCM	2156 (84/19)	4.50	8.00	0.75	4
CAS250-10-4N4-V-AA	CAS250-10-4N4-90-V-AA	2250 MCM - 2500 MCM	2156 (84/19)	4.50	10.00	0.75	4
CAS250-12-4N4-V-AA	CAS250-12-4N4-90-V-AA	2250 MCM - 2500 MCM	2156 (84/19)	4.50	12.00	0.75	4
CAS250-18-4N4-V-AA	CAS250-18-4N4-90-V-AA	2250 MCM - 2500 MCM	2156 (84/19)	4.50	18.00	0.75	4
CAS250-18-4N41/2-V-AA	CAS250-18-4N4-90-V-AA	2250 MCM - 2500 MCM	2156 (84/19)	4.50	18.00	0.75	4
CAS275-6-4N4-V-AA	CAS275-6-4N4-90-V-AA	2650 MCM - 2750 MCM	2515 (76/19)	4.50	6.00	0.75	4
CAS275-8-4N4-V-AA	CAS275-8-4N4-90-V-AA	2650 MCM - 2750 MCM	2515 (76/19)	4.50	8.00	0.75	4
CAS275-10-4N4-V-AA	CAS275-10-4N4-90-V-AA	2650 MCM - 2750 MCM	2515 (76/19)	4.50	10.00	0.75	4
CAS275-12-4N4-V-AA	CAS275-12-4N4-90-V-AA	2650 MCM - 2750 MCM	2515 (76/19)	4.50	12.00	0.75	4
CAS275-12-4N71/4-V-AA	CAS275-12-4N7 1/4-90-V-AA	2650 MCM - 2750 MCM	2515 (76/19)	4.50	12.00	0.75	4
CAS275-18-4N4-V-AA	CAS275-18-4N4-90-V-AA	2650 MCM - 2750 MCM	2515 (76/19)	4.50	18.00	0.75	4
CAS350-6-4N4-V-AA	CAS350-6-4N4-90-V-AA	3500 MCM	—	5.48	6.00	1.00	4
CAS350-13-4N4-V-AA	CAS350-13-4N4-90-V-AA	3500 MCM	—	5.48	13.00	1.00	4
CAS350-13-6N4-V-AA	CAS350-13-6N4-90-V-AA	3500 MCM	—	5.48	13.00	1.00	4

345/500 kV
Spacer Clamps