

DOSSERT® TYPE CAS-V-AA

Cable Spacer for Two Cables

Spacer is designed to be corona free for 500 kV service. Spacer is supplied with break-away head bolts to ensure correct installation.

Material

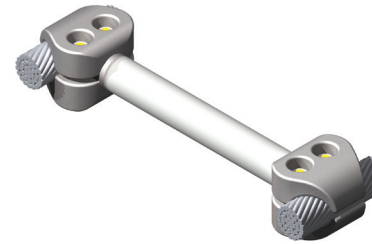
Aluminum Alloy

Hardware

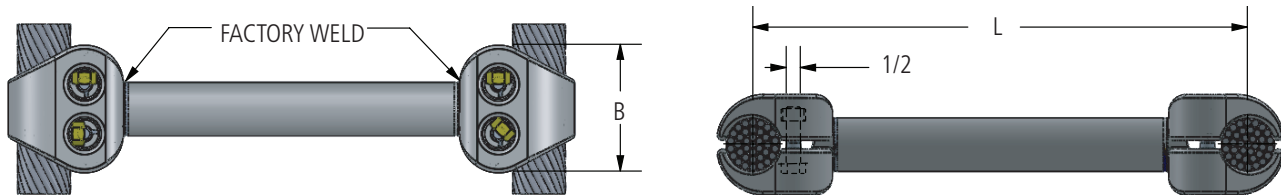
Yellow anodized aluminum nuts, bolts, lockwashers, and rubber retainers.

Notes

- For Stainless Steel bolts, lockwashers and Everdur nuts, add "-SSHBN" to catalog number. EX: CAS300-6-V-AA-SSHBN.
- For Grade Five Galvanized Steel Hardware, add "-GS5" to catalog number. EX: CAD300-6-V-AA-GS5.
- 6"-8" Spacing uses a solid cast body instead of welded tube.



345/500 kV
Spacer Clamps



Ordering Information

CATALOG NUMBER	CABLE RANGE			DIMENSIONS IN INCHES		NO. OF BOLTS
	MIN	MAX	ACSR	B	L	
CAS79-6-V-AA	750 MCM	795 MCM	636 (18/1; 24/7; 26/7)	2	6	2
CAS79-6.5-V-AA	750 MCM	795 MCM	636 (18/1; 24/7; 26/7)	2	6 1/2	2
CAS79-7-V-AA	750 MCM	795 MCM	636 (18/1; 24/7; 26/7)	2	7	2
CAS79-8-V-AA	750 MCM	795 MCM	636 (18/1; 24/7; 26/7)	2	8	2
CAS79-12-V-AA	750 MCM	795 MCM	636 (18/1; 24/7; 26/7)	2	12	2
CAS79-18-V-AA	750 MCM	795 MCM	636 (18/1; 24/7; 26/7)	2	18	2
CAS95-6-V-AA	800 MCM	954 MCM	795 (45/7; 24/7; 26/7)	2	6	2
CAS95-6.5-V-AA	800 MCM	954 MCM	795 (45/7; 24/7; 26/7)	2	6 1/2	2
CAS95-7-V-AA	800 MCM	954 MCM	795 (45/7; 24/7; 26/7)	2	7	2
CAS95-7.5-V-AA	800 MCM	954 MCM	795 (45/7; 24/7; 26/7)	2	7.5	2
CAS95-8-V-AA	800 MCM	954 MCM	795 (45/7; 24/7; 26/7)	2	8	2
CAS95-10-V-AA	800 MCM	954 MCM	795 (45/7; 24/7; 26/7)	2	10	2
CAS95-11-V-AA	800 MCM	954 MCM	795 (45/7; 24/7; 26/7)	2	11	2
CAS95-12-V-AA	800 MCM	954 MCM	795 (45/7; 24/7; 26/7)	2	12	2
CAS95-18-V-AA	800 MCM	954 MCM	795 (45/7; 24/7; 26/7)	2	18	2
CAS103-6-V-AA	1000 MCM	1033.5 MCM	954 (45/7; 54/7)	2	6	2
CAS103-8-V-AA	1000 MCM	1033.5 MCM	954 (45/7; 54/7)	2	8	2

DOSSERT® TYPE CAS-V-AA

Cable Spacer for Two Cables

Ordering Information (cont.)

CATALOG NUMBER	CABLE RANGE			DIMENSIONS IN INCHES		NO. OF BOLTS
	MIN	MAX	ACSR	B	L	
CAS103-9-V-AA	1000 MCM	1033.5 MCM	954 (45/7; 54/7)	2	9	2
CAS103-10-V-AA	1000 MCM	1033.5 MCM	954 (45/7; 54/7)	2	10	2
CAS103-12-V-AA	1000 MCM	1033.5 MCM	954 (45/7; 54/7)	2	12	2
CAS103-18-V-AA	1000 MCM	1033.5 MCM	954 (45/7; 54/7)	2	18	2
CAS127-6-V-AA	1113 MCM	1272 MCM	1033 (54/7), 1113 (45/7; 54/19)	4 1/2	6	4
CAS127-6.5-V-AA	1113 MCM	1272 MCM	1033 (54/7), 1113 (45/7; 54/19)	4 1/2	6 1/2	4
CAS127-8-V-AA	1113 MCM	1272 MCM	1033 (54/7) 1113 (45/7; 54/19)	4 1/2	8	4
CAS127-12-V-AA	1113 MCM	1272 MCM	1033 (54/7), 1113 (45/7; 54/19)	4 1/2	12	4
CAS127-16-V-AA	1113 MCM	1272 MCM	1033 (54/7), 1113 (45/7; 54/19)	4 1/2	16	4
CAS127-18-V-AA	1113 MCM	1272 MCM	1033 (54/7), 1113 (45/7; 54/19)	4 1/2	18	4
CAS143-6-V-AA	1300 MCM	1431 MCM	1272 (45/7; 54/19)	4 1/2	6	4
CAS143-6.5-V-AA	1300 MCM	1431 MCM	1272 (45/7; 54/19)	4 1/2	6 1/2	4
CAS143-8-V-AA	1300 MCM	1431 MCM	1272 (45/7; 54/19)	4 1/2	8	4
CAS143-12-V-AA	1300 MCM	1431 MCM	1272 (45/7; 54/19)	4 1/2	12	4
CAS143-13-V-AA	1300 MCM	1431 MCM	1272 (45/7; 54/19)	4 1/2	13	4
CAS143-18-V-AA	1300 MCM	1431 MCM	1272 (45/7; 54/19)	4 1/2	18	4
CAS160-6.5-V-AA	1500 MCM	1600 MCM, 1272 Rope L.	1431 (45/7; 54/19)	4 1/2	6 1/2	4
CAS160-8-V-AA	1500 MCM	1600 MCM, 1272 Rope L.	1431 (45/7; 54/19)	4 1/2	8	4
CAS160-9-V-AA	1500 MCM	1600 MCM, 1272 Rope L.	1431 (45/7; 54/19)	4 1/2	9	4
CAS160-11-V-AA	1500 MCM	1600 MCM, 1272 Rope L.	1431 (45/7; 54/19)	4 1/2	11	4
CAS160-12-V-AA	1500 MCM	1600 MCM, 1272 Rope L.	1431 (45/7; 54/19)	4 1/2	12	4
CAS160-18-V-AA	1500 MCM	1600 MCM, 1272 Rope L.	1431 (45/7; 54/19)	4 1/2	18	4
CAS180-6-V-AA	1700 MCM	1800 MCM	1590 (45/7; 54/19)	4 1/2	6	4
CAS180-7-V-AA	1700 MCM	1800 MCM	1590 (45/7; 54/19)	4 1/2	7	4
CAS180-8-V-AA	1700 MCM	1800 MCM	1590 (45/7; 54/19)	4 1/2	8	4
CAS180-11-V-AA	1700 MCM	1800 MCM	1590 (45/7; 54/19)	4 1/2	11	4
CAS180-12-V-AA	1700 MCM	1800 MCM	1590 (45/7; 54/19)	4 1/2	12	4
CAS180-18-V-AA	1700 MCM	1800 MCM	1590 (45/7; 54/19)	4 1/2	18	4
CAS205-6-V-AA	2000 MCM	2049 ACAR	1780 (84/19) 2034.5 (72/7)	4 1/2	6	4
CAS205-8-V-AA	2000 MCM	2049 ACAR	1780 (84/19) 2034.5 (72/7)	4 1/2	8	4
CAS205-12-V-AA	2000 MCM	2049 ACAR	1780 (84/19) 2034.5 (72/7)	4 1/2	12	4
CAS205-13-V-AA	2000 MCM	2049 ACAR	1780 (84/19) 2034.5 (72/7)	4 1/2	13	4
CAS205-15-V-AA	2000 MCM	2049 ACAR	1780 (84/19) 2034.5 (72/7)	4 1/2	15	4
CAS205-18-V-AA	2000 MCM	2049 ACAR	1780 (84/19) 2034.5 (72/7)	4 1/2	18	4
CAS205-24-V-AA	2000 MCM	2049 ACAR	1780 (84/19) 2034.5 (72/7)	4 1/2	24	4
CAS205-42-V-AA	2000 MCM	2049 ACAR	1780 (84/19) 2034.5 (72/7)	4 1/2	42	4

DOSSERT® TYPE CAS-V-AA

Cable Spacer for Two Cables

Ordering Information (cont.)

CATALOG NUMBER	CABLE RANGE			DIMENSIONS IN INCHES		NO. OF BOLTS
	MIN	MAX	ACSR	B	L	
CAS205-43-V-AA	2000 MCM	2049 ACAR	1780 (84/19) 2034.5 (72/7)	4 1/2	43	4
CAS250-6.5-V-AA	2250 MCM	2500 MCM	2156 (84/19) 2300 (96/19)	4 1/2	6 1/2	4
CAS250-8-V-AA	2250 MCM	2500 MCM	2156 (84/19) 2300 (96/19)	4 1/2	8	4
CAS250-10-V-AA	2250 MCM	2500 MCM	2156 (84/19) 2300 (96/19)	4 1/2	10	4
CAS250-12-V-AA	2250 MCM	2500 MCM	2156 (84/19) 2300 (96/19)	4 1/2	12	4
CAS250-13-V-AA	2250 MCM	2500 MCM	2156 (84/19) 2300 (96/19)	4 1/2	13	4
CAS250-15.5-V-AA	2250 MCM	2500 MCM	2156 (84/19) 2300 (96/19)	4 1/2	15 1/2	4
CAS250-18-V-AA	2250 MCM	2500 MCM	2156 (84/19) 2300 (96/19)	4 1/2	18	4
CAS275-8-V-AA	—	2750 MCM	2515 (76/19)	4 1/2	8	4
CAS275-13-V-AA	—	2750 MCM	2515 (76/19)	4 1/2	13	4
CAS275-18-V-AA	—	2750 MCM	2515 (76/19)	4 1/2	18	4
CAS300-8-V-AA	2750 MCM	3000 MCM	—	4 1/2	8	4
CAS300-18-V-AA	2750 MCM	3000 MCM	—	4 1/2	18	4
CAS300-20-V-AA	2750 MCM	3000 MCM	—	4 1/2	20	4
CAS350-6-V-AA	3500 MCM	3500 MCM	—	5 1/2	6	4
CAS350-8-V-AA	3500 MCM	3500 MCM	—	5 1/2	8	4
CAS350-13-V-AA	3500 MCM	3500 MCM	—	5 1/2	13	4

345/500 kV
Spacer Clamps