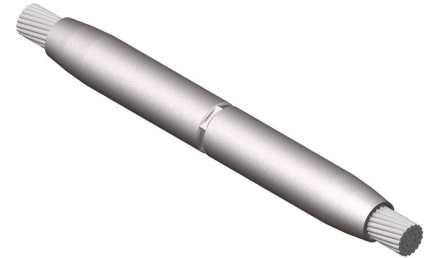


DOSSERT® TYPE 5000

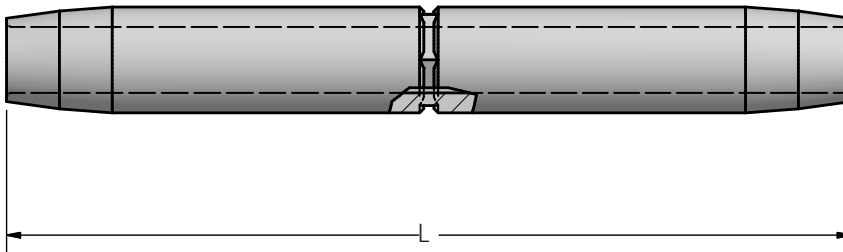
Jumper Connector-Compression

The 5000 Series Jumper Connector is designed for AAC conductors. The jumper connector is fabricated from AFL seamless drawn aluminum. All jumper connectors are designed for limited tension use, maintaining a minimum of 40% of the ASTM rated strength of the conductor on which it is being used.



Material

Aluminum Alloy



Ordering Information

CONDUCTOR SIZE			CATALOG NUMBER	DIE SIZE	NOMINAL WEIGHT	DIMENSION IN INCHES
KCM	STRAND					
	AL.	ST.				
					LBS	L
795.0	37 & 61	-	5030.109	30AH	2.1	13
795.0	26	7	5030.116	30AH	2.0	13
954.0	37 & 61	-	5030.122	30AH	1.8	13
954.0	45	7	5030.122	30AH	1.8	13
954.0	54	7	5030.125	30AH	1.8	13
1033.5	45	7	5034.128	34AH	2.8	14
1113.0	61	-	5034.128	34AH	2.8	14
1192.5	45	7	5034.138	34AH	2.5	14
1272.0	45	7	5036.144	36AH	3.2	15
1351.5	45	7	5036.147	36AH	3.1	15
1590.0	61 & 91	-	5038.156	38AH	3.8	16
1590.0	45	7	5040.162	40AH	4.5	17
1780.0	84	19	5042.178	42AH	4.6	17
2156.0	84	19	5044.184	44AH	5.1	17
2500.0	91	-	5044.188	44AH	5.0	17