

## DOSSERT®

### Type 2700-EHV, 2600-EHV

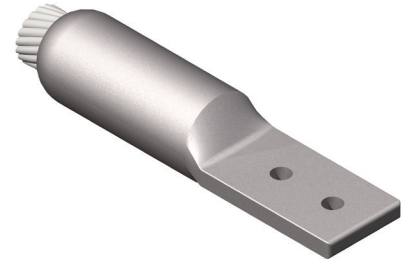
Substation straight terminals are designed for limited space applications as found in substations. Terminals are shorter than conventional terminals which saves space and allows for faster installation. Terminals are installed with standard AFL hex dies. Terminals can be supplied pre-filled if required.

#### Material

Aluminum Alloy

#### Notes

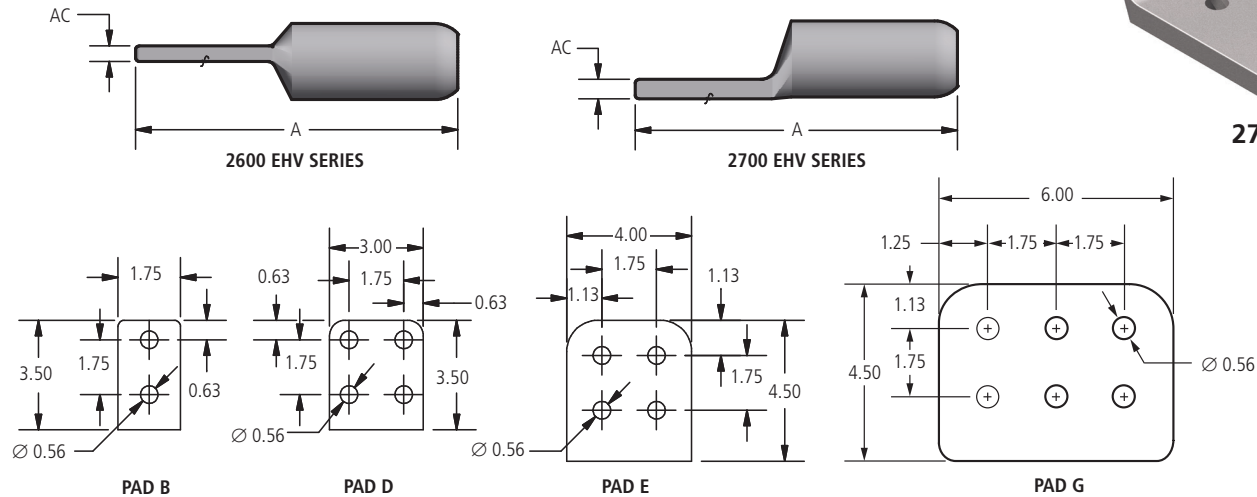
- For Pre-filled Terminals, add "P" to catalog number. EX: 2734.1EHVP
- For Electro Tin Plate, add "-SN" to catalog number. EX: 2734.1EHV-SN
- Other pad sizes can be custom ordered.



2600-EHV



2700-EHV



### Ordering Information

CATALOG NUMBER		CONDUCTOR RANGE			PAD SIZE	DIE SIZE	DIMENSIONS IN INCHES		NOMINAL WEIGHT LBS
OFFSET PAD	CENTER FORMED PAD	DIAMETER	AAC	ACSR			A	AC	
2730.1EHV	2630.1EHV	1.026 - 1.196	795 - 1033.5	715.5(24/7) - 954(54/7)	D	30AH	8.92	0.62	1.6
2734.1EHV	2634.1EHV	1.186 - 1.313	1113 - 1272	954(54/7) - 1192.5(45/7)	D	34AH	9.28	0.62	1.9
2734.1EEHV	2634.1EEHV	1.186 - 1.313	1113 - 1272	954(54/7) - 1192.5(45/7)	E	34AH	10.28	0.75	2.1
2736.1EHV	2636.1EHV	1.314 - 1.399	1300 - 1431	1192.5(54/19) - 1351.5(45/7)	D	36AH	9.54	0.62	2.1
2736.1EEHV	2636.1EEHV	1.314 - 1.399	1300 - 1431	1192.5(54/19) - 1351.5(45/7)	E	36AH	10.54	0.63	2.5
2738.1EHV	2638.1EHV	1.399 - 1.500	1500 - 1590	1351.5(54/19) - 1510.5(45/7)	D	38AH	9.69	0.62	2.3
2738.1GEHV	2638.1GEHV	1.399 - 1.500	1500 - 1590	1351.5(54/19) - 1510.5(45/7)	G	38AH	10.38	0.63	3.1
2740.1EHV	2640.1EHV	1.501 - 1.630	1750 - 2000	1510.5(54/19) - 1780(84/19)	D	40AH	10.27	0.62	2.6
2744.1EHV	2644.1EHV	1.630 - 1.681	2000	2034(72/7)	E	44AH	11.61	0.75	4.0
2744.2EHV	2644.2EHV	1.669 - 1.823	2250 - 2500	2034(72/7) - 2312(76/19)	E	44AH	12.00	0.88	4.0
2748.1EHV	2648.1EHV	1.823 - 1.996	2500 - 2750	2515(76/19)	E	48AH	12.64	0.75	4.6
2748.2EHV	2648.2EHV	1.996 - 2.158	3000-3500	—	E	48AH	12.64	0.75	4.0