

DOSSERT® TYPE TWGCC-N-8-V-AA

Three-Way Terminal Connector

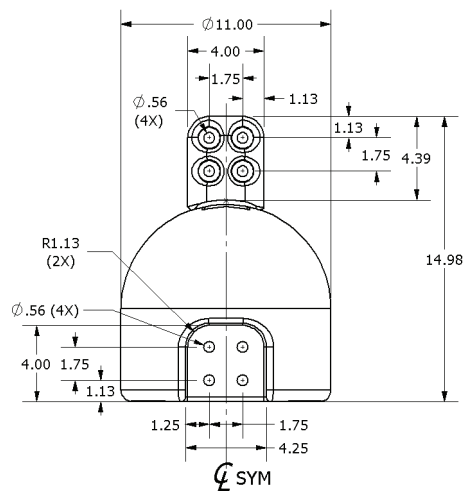
Connects one four-hole or six-hole terminal to three four-hole terminals. 3600 amps at 30° rise over 40° ambient; 3848 amps at 40° rise over 40° ambient; 4082 amps at 50° rise over 40° ambient. Designed for 500 kV service.

Material

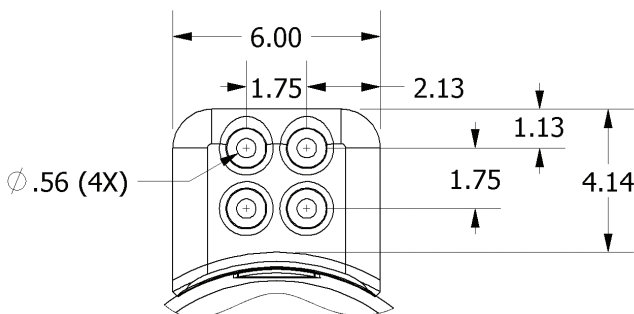
Aluminum Alloy

Ordering Information

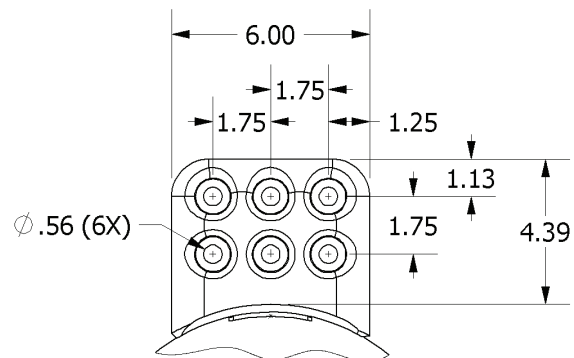
Customer to order by catalog number TWGCC4N4-8-V-AA, TWGCC4N6-8-V-AA, or TWGCC6N4-8-V-AA.



TWGCC4N4-8-V-AA



TWGCC4N6-8-V-AA



TWGCC6N4-8-V-AA