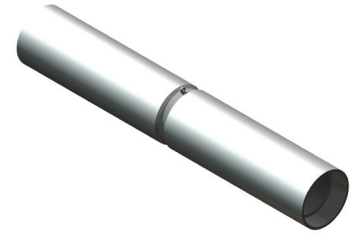


## DOSSERT® TYPE WWC-AA, WWC-E-AA

### Aluminum Welded Coupler Rated for 500 kV

Coupler is designed to make connections with high mechanical strength and high electrical conductivity.



#### Material

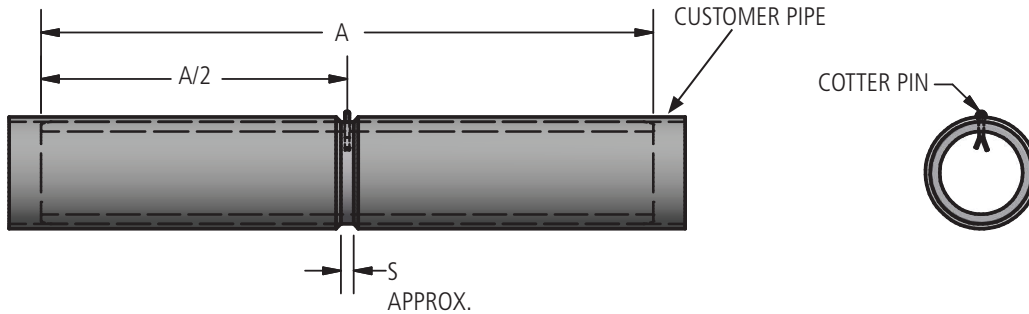
Aluminum tubing

#### Hardware

Aluminum cotter pin

#### Notes

For pipe sizes greater than 6 inch or special I.D. and O.D. applications, please contact AFL. A shorter version of this coupler is Type WS.



### Ordering Information

CATALOG NUMBER		SPS / EPHS	DIMENSIONS (INCHES)	
SCHEDULE 40	SCHEDULE 80		A	S
WWC75-AA	WWC75E-AA	3/4	4-1/2	1/4
WWC100-AA	WWC100E-AA	1	6	1/4
WWC125-AA	WWC125E-AA	1-1/4	7-1/2	3/8
WWC150-AA	WWC150E-AA	1-1/2	9	3/8
WWC200-AA	WWC200E-AA	2	12	3/8
WWC250-AA	WWC250E-AA	2-1/2	15	1/2
WWC300-AA	WWC300E-AA	3	18	1/2
WWC350-AA	WWC350E-AA	3-1/2	21	1/2
WWC400-AA	WWC400E-AA	4	24	1/2
WWC450-AA	WWC450E-AA	4-1/2	24	1/2
WWC500-AA	WWC500E-AA	5	24	1/2
WWC600-AA	WWC600E-AA	6	24	5/8
WWC600-5/8-AA	—	6-5/8 WALL	12	5/8
WWC600R38-AA	—	6 OD 3/8 WALL	38	5/8
WWC800-AA	WWC800E-AA	8	24	5/8
WWC800R38-AA	—	8 OD 3/8 WALL	38	5/8
WWC800R-AA	—	8 OD 1/2 WALL	24	5/8
WWC800R9/32-AA	—	8 OD 9/32 WALL	12	5/8