

## DOSSERT® TYPE WPC-N-V-AA, WP2C-N-V-AA

### Welded Terminal Connector

Terminal connector is designed to be corona free for 345 kV and 500 kV service.

#### Material

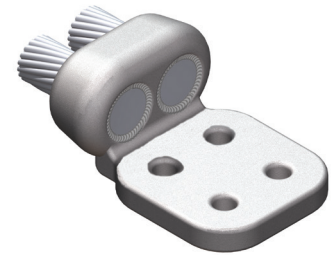
Aluminum Alloy

#### Notes

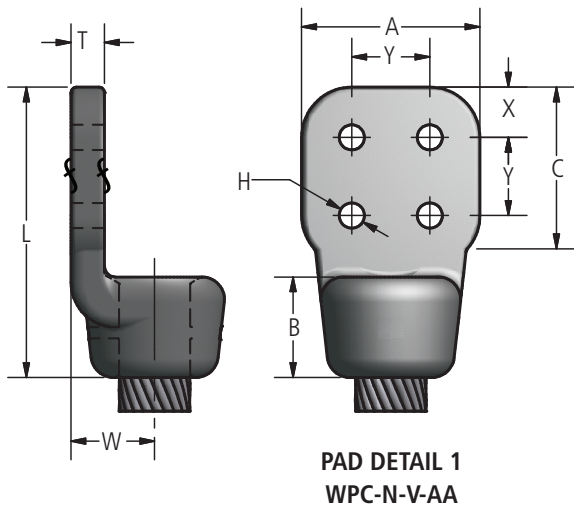
- For Hardware Shield, add "-CSBV" to catalog number. EX: WPC250-4N4-V-AA-CSBV.
- For (2) Hardware Shields, add "-2CSBV" to catalog number. EX: WPC250-4N4-V-AA-2CSBV.



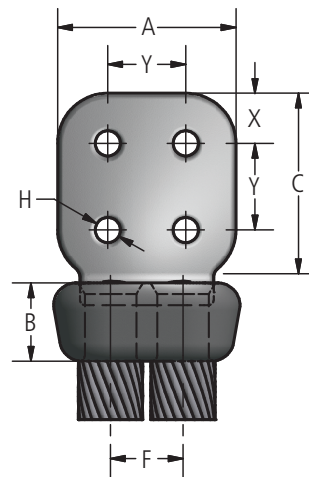
WPC-N-V-AA



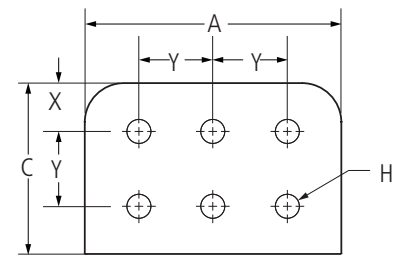
WP2C-N-V-AA



PAD DETAIL 1  
WPC-N-V-AA



WP2C-N-V-AA



PAD DETAIL 2

### Ordering Information

CATALOG NUMBER		CABLE RANGE		PAD DETAIL	DIMENSIONS IN INCHES									
		ACSR	ALUMINUM		A	B	C	F	H	L	T	W	X	Y
WPC65-4N4-V-AA	WP2C65-4N4-V-AA	556.5 (18/2, 24/7, 26/7) 636 (30/19)	600 (37, 61, 91) 636 (37, 61, 91) 650 (37, 61, 91)	1	4.00	1.50	4.00	1.63	0.56	5.75	0.50	1.31	0.63	1.75
WPC80-4N-V-AA	WP2C80-4N-V-AA	636 (30/19) 666.6 (24/7, 26/7) 715.5 (24/7)	750 (37, 61, 91) 795 (37, 61) 800 (61, 91)	1	3.00	1.50	3.00	1.63	0.56	3.00	0.50	1.31	0.63	1.75
WPC80-4N4-V-AA	WP2C80-4N4-V-AA	636 (30/19) 666.6 (24/7, 26/7) 715.5 (24/7)	750 (37, 61, 91) 795 (37, 61) 800 (61, 91)	1	4.00	1.50	4.00	1.63	0.56	4.00	0.50	1.31	1.13	1.75
WPC80-4S4-V-AA	WP2C80-4S4-V-AA	636 (30/19) 666.6 (24/7, 26/7) 715.5 (24/7)	750 (37, 61, 91) 795 (37, 61) 800 (61, 91)	1	4.00	1.50	4.00	1.63	0.69	4.00	0.50	1.31	1.00	2.00
WPC90-4N4-V-AA	WP2C90-4N4-V-AA	715.5 (30/19) 795 (36/1, 45/7, 24/7, 54/7)	800 (61, 91) 874.5 (37, 61) 900 (37, 61, 91)	1	4.00	1.50	4.00	1.63	0.56	6.25	0.50	1.31	1.13	1.75

## DOSSERT® TYPE WPC-N-V-AA, WP2C-N-V-AA (cont.)

### Welded Terminal Connector

#### Ordering Information

CATALOG NUMBER		CABLE RANGE		PAD DETAIL	DIMENSIONS IN INCHES									
		ACSR	ALUMINUM		A	B	C	F	H	L	T	W	X	Y
WPC90-4S4-V-AA	WP2C90-4S4-V-AA	715.5 (30/19) 795 (36/1, 45/7, 24/7, 54/7)	800 (61,91) 874.5 (37,61) 900 (37,61,91)	1	4.00	1.50	4.00	1.63	0.69	6.25	0.50	1.31	1.00	2.00
WPC95-4N4-V-AA	WP2C95-4N4-V-AA	795 (30/19, 26/7) 874.5 (54/7) 900 (45/7, 54/7)	900 (37,61,91) 954 (37,61)	1	4.00	1.75	4.00	1.63	0.56	6.00	0.50	1.38	1.13	1.75
WPC95-4S4-V-AA	WP2C95-4S4-V-AA	795 (30/19, 26/7) 874.5 (54/7) 900 (45/7, 54/7)	900 (37,61,91) 954 (37,61)	1	4.00	1.75	4.00	1.63	0.69	6.00	0.50	1.38	1.00	2.00
WPC103-4N4-V-AA	WP2C103-4N4-V-AA	954 (36/1, 45/7, 54/7)	954 (37,61) 1000 (37, 61, 91) 1033.5 (37, 61)	1	4.00	1.75	4.00	1.75	0.56	6.00	0.50	1.38	1.13	1.75
WPC103-4S4-V-AA	WP2C103-4S4-V-AA	954 (36/1, 45/7, 54/7)	954 (37,61) 1000 (37,61,91) 1033.5 (37,61)	1	4.00	1.75	4.00	1.75	0.69	6.00	0.50	1.38	1.00	2.00
WPC103-6N4-V-AA	WP2C103-6N4-V-AA	954 (36/1, 45/7, 54/7)	954 (37,61) 1000 (37, 61, 91) 1033.5 (37, 61)	2	6.00	1.75	4.00	1.75	0.56	6.00	0.50	1.38	1.13	1.75
WPC111-4N4-V-AA	WP2C111-4N4-V-AA	1033.5 (36/1, 45/7, 54/7)	1100 (91,127) 1113 (61)	1	4.00	1.75	4.00	-	0.56	6.00	0.50	1.38	1.13	1.75
WPC111-4S4-V-AA	WP2C111-4S4-V-AA	1033.5 (36/1, 45/7, 54/7)	1100 (91,127) 1113 (61)	1	4.00	1.75	4.00	-	0.69	6.00	0.50	1.38	1.00	2.00
WPC127R-4N4-V-AA	WP2C127R-4N4-V-AA	-	1272 MCM ROPELAY	1	4.00	2.00	4.00	2.25	0.56	6.25	0.75	1.75	1.13	1.75
WPC127R-4S4-V-AA	WP2C127R-4S4-V-AA	-	1272 MCM ROPELAY	1	4.00	2.00	4.00	2.25	0.69	6.25	0.69	1.56	1.00	2.00
WPC135-4N4-V-AA	WP2C135-4N4-V-AA	1113 (45/7, 54/19) 1192.5 (45/7, 54/19)	1192.5 (61) 1200 (91,127) 1250 (91,127) 1271 (61) 1300 (91, 127) 1351.5 (61)	1	4.00	2.00	4.00	2.00	0.56	6.25	0.63	1.63	1.13	1.75
WPC135-4S4-V-AA	WP2C135-4S4-V-AA	1113 (45/7, 54/19) 1192.5 (45/7, 54/19)	1192.5 (61) 1200 (91,127) 1250 (91,127) 1271 (61) 1300 (91, 127) 1351.5 (61)	1	4.00	2.00	4.00	2.25	0.69	6.25	0.56	1.50	1.00	2.00
WPC151-4N4-V-AA	WP2C151-4N4-V-AA	1272 (45/7, 54/19) 1351 (45/7, 54/19)	1400 (91,127) 1431 (61) 1500 (91,127) 1510.5 (61)	1	4.00	2.00	4.00	2.25	0.56	6.25	0.69	1.69	1.13	1.75
WPC151-4S4-V-AA	WP2C151-4S4-V-AA	1272 (45/7, 54/19) 1351 (45/7, 54/19)	1400 (91,127) 1431 (61) 1500 (91,127) 1510.5 (61)	1	4.00	2.00	4.00	2.25	0.69	6.25	0.69	1.69	1.00	2.00

## DOSSERT®

### TYPE WPC-N-V-AA, WP2C-N-V-AA (cont.)

#### Welded Terminal Connector

#### Ordering Information

CATALOG NUMBER		CABLE RANGE		PAD DETAIL	DIMENSIONS IN INCHES									
		ACSR	ALUMINUM		A	B	C	F	H	L	T	W	X	Y
WPC170-4N4-V-AA	WP2C170-4N4-V-AA	1431 (45/7, 54/19) 1510.5 (45/7, 54/19)	1590 (61) 1600 (127, 169) 1700 (127, 169)	1	4.00	2.00	4.00	2.25	0.56	6.50	0.69	1.69	1.13	1.75
WPC170-4S4-V-AA	WP2C170-4S4-V-AA	1431 (45/7, 54/19) 1510.5 (45/7, 54/19)	1590 (61) 1600 (127, 169) 1700 (127, 169)	1	4.00	2.00	4.00	2.25	0.69	6.50	0.69	1.69	1.00	2.00
WPC170-6N4-V-AA	WP2C170-6N4-V-AA	1431 (45/7, 54/19) 1510.5 (45/7, 54/19)	1590 (61) 1600 (127, 169) 1700 (127, 169)	2	6.00	2.00	4.00	2.25	0.56	6.50	0.69	1.69	1.13	1.75
WPC190-4N4-V-AA	WP2C190-4N4-V-AA	1590 (45/7, 54/19) 1780 (84/19)	1750 (127, 169) 1800 (127, 169) 1900 (127, 169)	1	4.00	2.25	4.00	2.25	0.56	6.50	0.69	1.75	1.13	1.75
WPC190-6N4-V-AA	WP2C190-6N4-V-AA	1590 (45/7, 54/19) 1780 (84/19)	1750 (127, 169) 1800 (127, 169) 1900 (127, 169)	2	6.00	2.25	4.00	2.25	0.56	6.63	0.88	2.25	1.13	1.75
WPC190-4S4-V-AA	WP2C190-4S4-V-AA	1590 (45/7, 54/19) 1780 (84/19)	1750 (127, 169) 1800 (127, 169) 1900 (127, 169)	1	4.00	2.25	4.00	2.25	0.69	6.50	0.69	1.75	1.00	2.00
WPC225-4N4-V-AA	WP2C225-4N4-V-AA	2167 (72/7)	2000 (91, 127, 169) 2250 (91)	1	4.00	2.25	4.00	2.38	0.56	6.50	0.75	1.88	1.13	1.75
WPC225-6N4-V-AA	WP2C225-6N4-V-AA	2167 (72/7)	2000 (91, 127, 169) 2250 (91)	2	6.00	2.25	4.00	2.38	0.56	6.50	0.75	1.88	1.13	1.75
WPC225-4S4-V-AA	WP2C225-4S4-V-AA	2167 (72/7)	2000 (91, 127, 169) 2250 (91)	1	4.00	2.25	4.00	2.38	0.69	6.50	0.75	1.88	1.00	2.00
WPC240R-4N4-V-AA	WP2C240R-4N4-V-AA	-	2.40 DIA.	1	4.00	2.75	4.00	-	0.56	6.25	1.00	2.50	1.13	1.75
WPC240R-4S4-V-AA	WP2C240R-4S4-V-AA	-	2.40 DIA.	1	4.00	2.75	4.00	-	0.69	6.25	1.00	2.50	1.00	2.50
WPC250-4N4-V-AA	WP2C250-4N4-V-AA	2156 (84/19)	2500 (91, 127, 169) 2493 (ACAR)	1	4.00	2.25	4.00	2.63	0.56	6.50	0.75	1.94	1.13	1.75
WPC250-4S4-V-AA	WP2C250-4S4-V-AA	2156 (84/19)	2500 (91, 127, 169) 2493 (ACAR)	1	4.00	2.25	4.00	2.63	0.69	6.50	0.75	1.94	1.00	2.00
WPC300-4N4-V-AA	WP2C300-4N4-V-AA	-	2750 (91) 3000 (127, 169)	1	4.00	2.25	4.00	-	0.56	6.88	0.88	2.13	1.13	1.75
WPC300-4S4-V-AA	WP2C300-4S4-V-AA	-	2750 (91) 3000 (127, 169)	1	4.00	2.25	4.00	-	0.69	6.88	0.88	2.13	1.00	2.00