



60AGSC & 60AFTGSC COMPRESSORS

OPERATING & MAINTENANCE INSTRUCTIONS

REVISION: B - 0413
Part Sheet: 54428



MODEL SHOWN: 60AFTGSC

MAILING / SHIPPING
104 Hidden Lake Circle
Spartangreen Business Park
Duncan, SC 29334
(800) 866-7385

PARTS OR SERVICE
Enerpac National
Accounts Services
(877) 864-7722

INTRODUCTION

The model 60AGSC and 60AFTGSC Compressors are remote powered hydraulic tools utilizing a single acting cylinder that can develop 60 tons of thrust at 10,000 PSI which is normal operating pressure.

The purpose of this manual is not to encourage extensive repair of the unit, but rather to facilitate minor repair and replacement of new or exchange assemblies in the field. It is usually less costly and less time consuming to return the unit to the factory if minor repairs are required.

SPECIFICATIONS



MODEL SHOWN: 60AFTGSC

Maximum Force:

62.8 Tons @ 10,000 PSI

Crimping Capacity:

1590 MCM AL, CU, 54/19 ACSR

Stroke:

1.310

Piston Diameter.:

4.000

Fluid:

SIMPLEX AW32 (OR EQUIVALENT) 17 CU. IN.

Weight:

56.5 LBS (with oil)

Model:

60AGSC

Weight:

52 LBS., without ground stand

Size:

5.75" X 8" X 13" High

Model:

60AFTGSC

Weight:

56LBS., without ground stand

Size:

5.75" X 9.75 X 14" High

OPERATING INSTRUCTIONS

DO NOT OPERATE COMPRESSOR WITHOUT DIES

The connection of the compressor and hydraulic hose is quickly and easily made by use of a quick coupler. It is very important that these connections be clean and tight.

With this connection properly made, the ball checks in both female and male halves will open and permit free flow of oil into the compressor.

Select the proper die set. Slide one of the identical die-halves into top die holder while depressing the die release button . In same manner, install remaining die-half in the piston cavity.

Model **60AGSC** and **60AFTGSC** can be operated in any position. When used on the ground, it is set upright in its stand; when used in the air, it is suspended by the bail.

For model **60AGSC**, remove head unit by depressing the cap locking trigger and rotating the cap 90 degrees.

For model **60AFTGSC** merely rotate head unit by the handle or eyes and open press. Place accessory to be compressed between cylinder uprights and against piston die-half. Replace the head unit and use the pump to close dies. When dies meet, the compression is complete. Release the pressure at the pump and the lower die will retract. When compressing the accessories, overlap each bit of the dies just enough to make a smooth continuous compressed section.

CAUTION: Care should be taken that the compressor is never operated without dies. It is also important that the head be locked into position, aligning the diehalves, and the accessory properly seated in the die grooves before operating the compressor.

PREVENTATIVE MAINTENANCE

A regular maintenance program is recommend to prevent service problems This should consist of through cleaning, changing oil, replacing the hydraulic seals, oiling moving parts, and inspecting the compressor for damage. The compressor, pump and oil filled hoses should be drained and flushed periodically.

The majority of service troubles are caused by dirt collection at the tool or in the oil system. Keep the tool clean and prevent foreign matter from entering the fluid when filling the remote pump reservoir. Refer to the SPECIFICATIONS for the proper oil when replenishing or replacing the fluid. **DO NOT USE BRAKE FLUID OF ANY KIND.** Wipe the dust caps clean after disconnection.

Lubricate all moving parts. Never operate the compressor without dies. Do not use for any purpose other than for which it was designed. This tool has been manufactured to precision tolerances. It should be used with the same care and attention as any other high grade equipment.

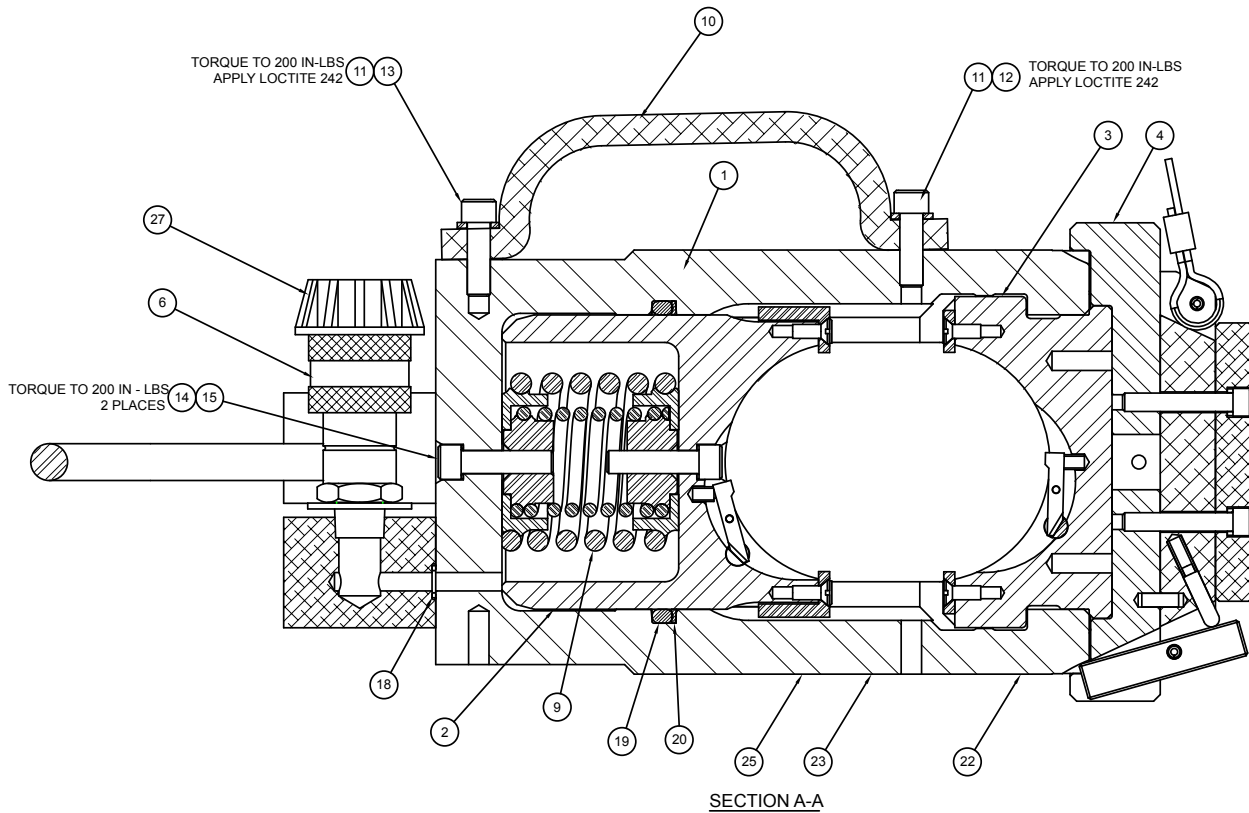
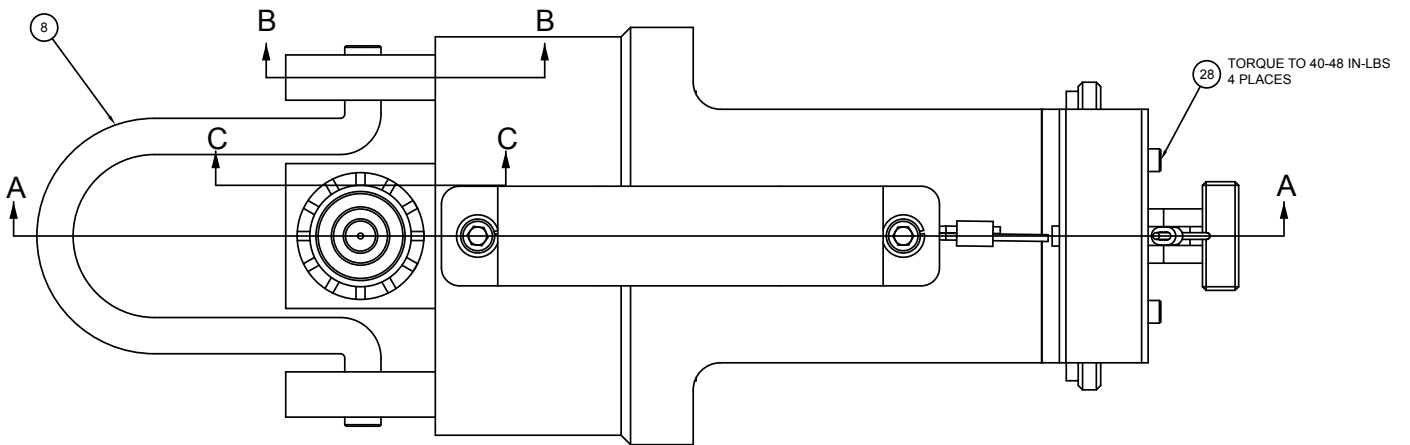
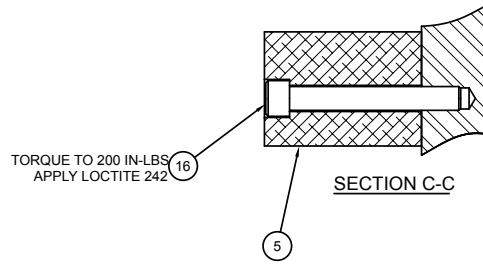
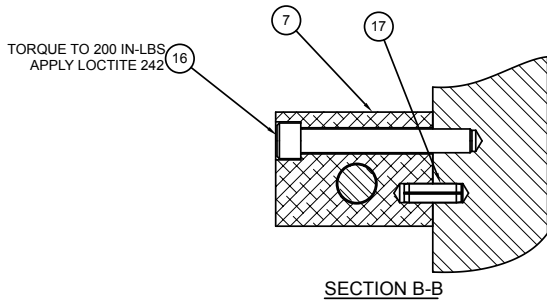
OPERATING INSTRUCTIONS

SECTION V **TROUBLESHOOTING**

If the procedures listed below do not remedy the problem, the pump will require service and should be taken to an Authorized SIMPLEX Service Center for repair.

PROBLEM	PROBABLE CAUSE	SOLUTION
<i>Dies will not close</i>	Incorrect size of die being used. Relief setting too low from pump source.	Replace dies with proper size. Check pressure output from power source.
<i>Lower die will not retract</i>	Loose coupler. Retracting spring broken.	Check and tighten all coupler halves. Note - If under pressure, it may be necessary to use pliers to apply enough force to tighten.
<i>Excessive oil around the piston area</i>	Worn or damaged seal.	Contact factory for instructions. A small amount is acceptable for lubrication.

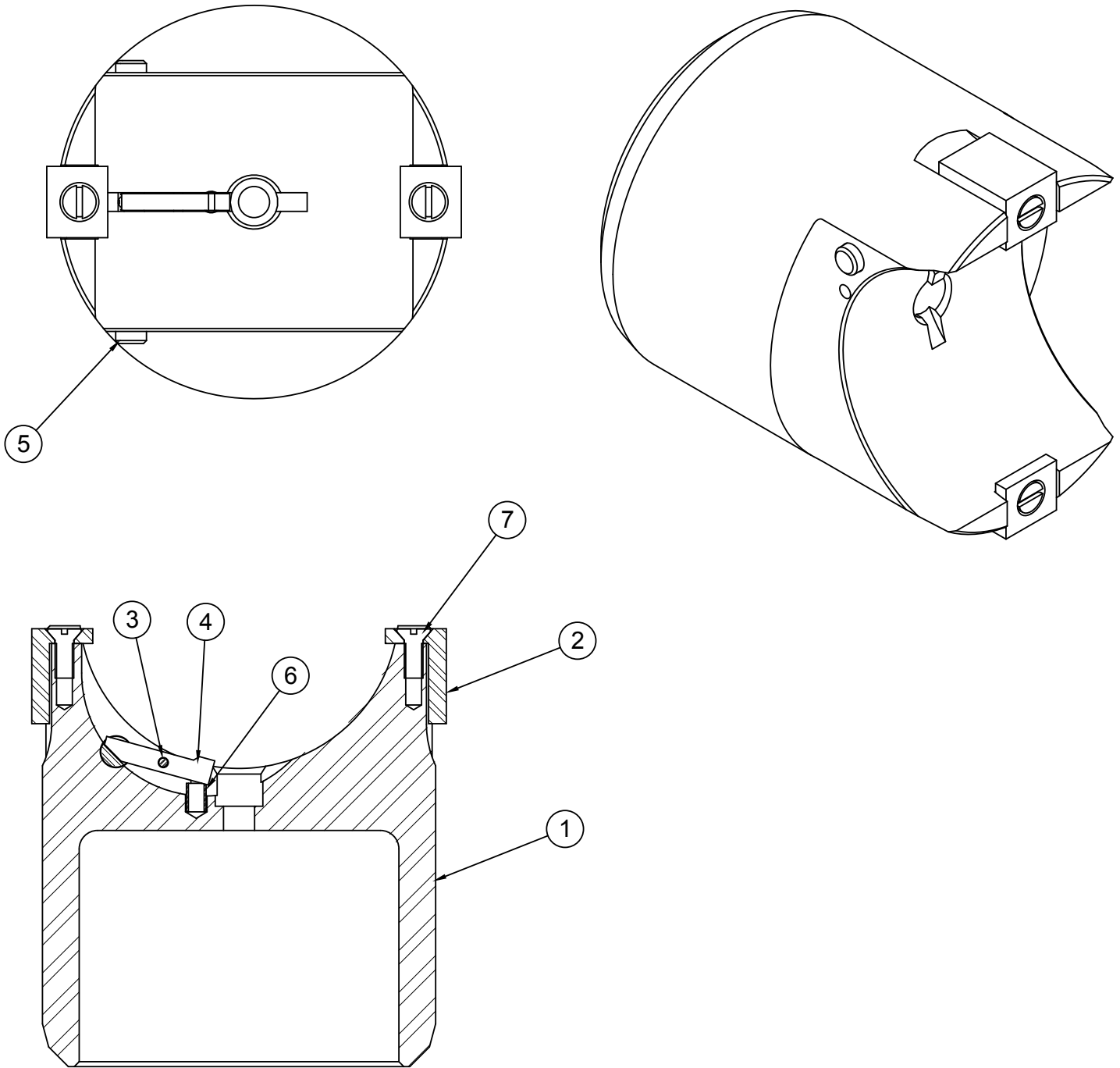
COMPRESSOR ASSEMBLY 60AGSC



COMPRESSOR ASSEMBLY 60AGSC

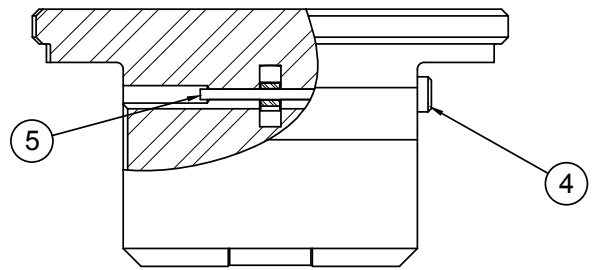
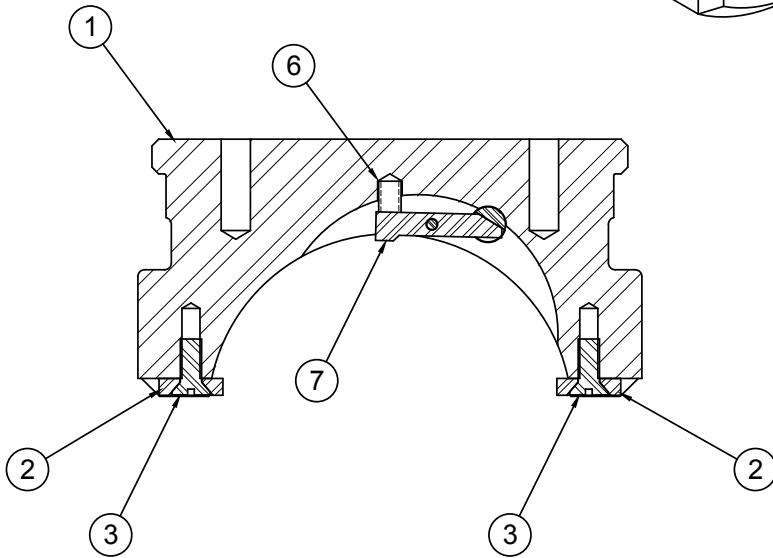
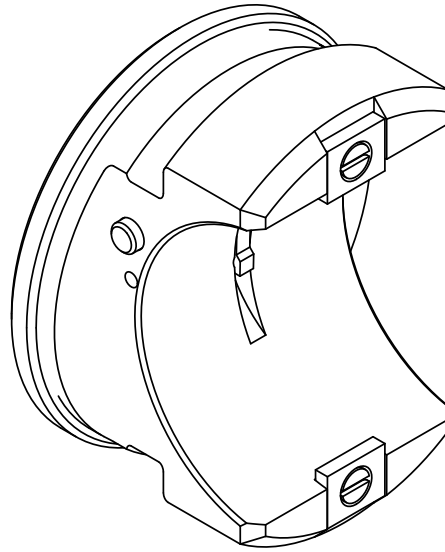
Item #	Part #	Name	Qty.
NS	45183	METAL BOX	1
NS	45189	ALCOA LABEL - BOX	1
1	45151	CYLINDER FRAME	1
2	45132SS	RAM ASSEMBLY	1
3	45135	TOP DIE HOLDER ASM	1
4	45133SS	CAP ASM	1
5	45139	COUPLER BLOCK	1
6	40858	FEMALE COUPLER 3050-3	1
7	45138	HANGER BLOCK	2
8	45140	HANGER	1
9	45131	SPRING ASSM	1
10	45156	HANDLE	1
11	93942	5/16" LOCK WASHER ZINC PLATE	2
12	84188	SHCS 5/16-24 X 1" LG	1
13	82850	SHCS 5/6-24 X .75 LG	1
14	*	COPPER WASHER	2
15	45085	SHCS 5/16-24 X 1.25LG	2
16	82892	SHCS 5/16-24 X 2" LG	4
17	83807	ROLL PIN 1/4 X .75 LG	2
18	*	O-RING 5/16X7/16 URE	1
19	*	O-RING 4" X 4 3/8	1
20	*	BACKUP WASHER - TEFLON	1
21	45157	GROUND STAND	1
22	45190	CAUTION LABEL - DIES	1
23	45187	CAUTION LABEL - FLUID	1
24	45188	ALCOA LABEL - TOOL	1
25	45191	LABEL ""MADE IN USA""	1
26	45186	NAME PLATE 60A	1
27	CR215	DUST CAP	1
28	45084	SHCS #10-32 X .875	4
*	54202	SEAL KIT	

RAM ASSEMBLY - 45132SS



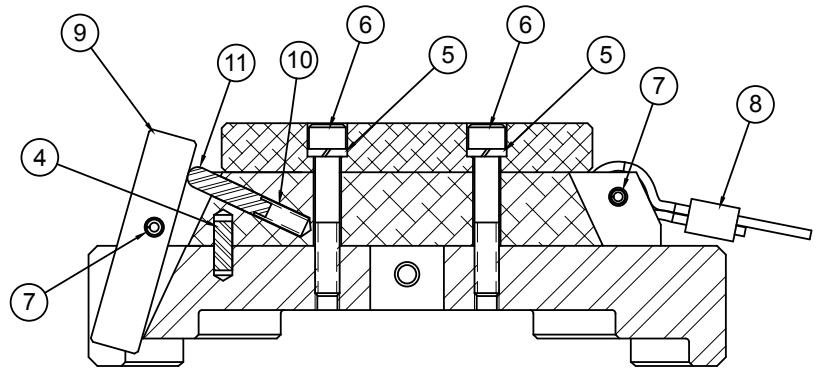
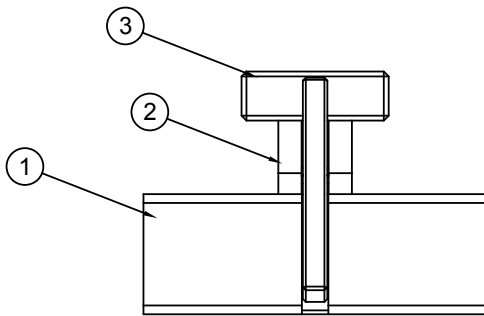
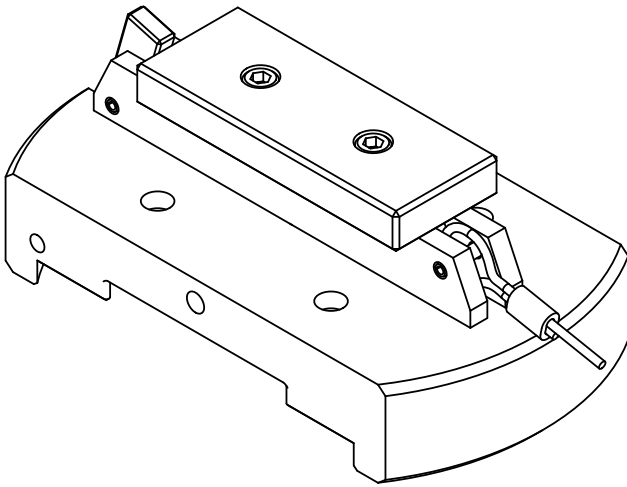
Item #	Part #	Name	Qty.
1	45152	PISTON	1
2	45148	PISTON GUIDE	2
3	45092	PISTON LATCH PIN	1
4	45150	LATCH	1
5	45149	LATCH RELEASE	1
6	45099	SPRING DIE LOCK	1
7	97156	FHMS 10-32X.50LG	2

DIE HOLDER ASSEMBLY - 45135SS



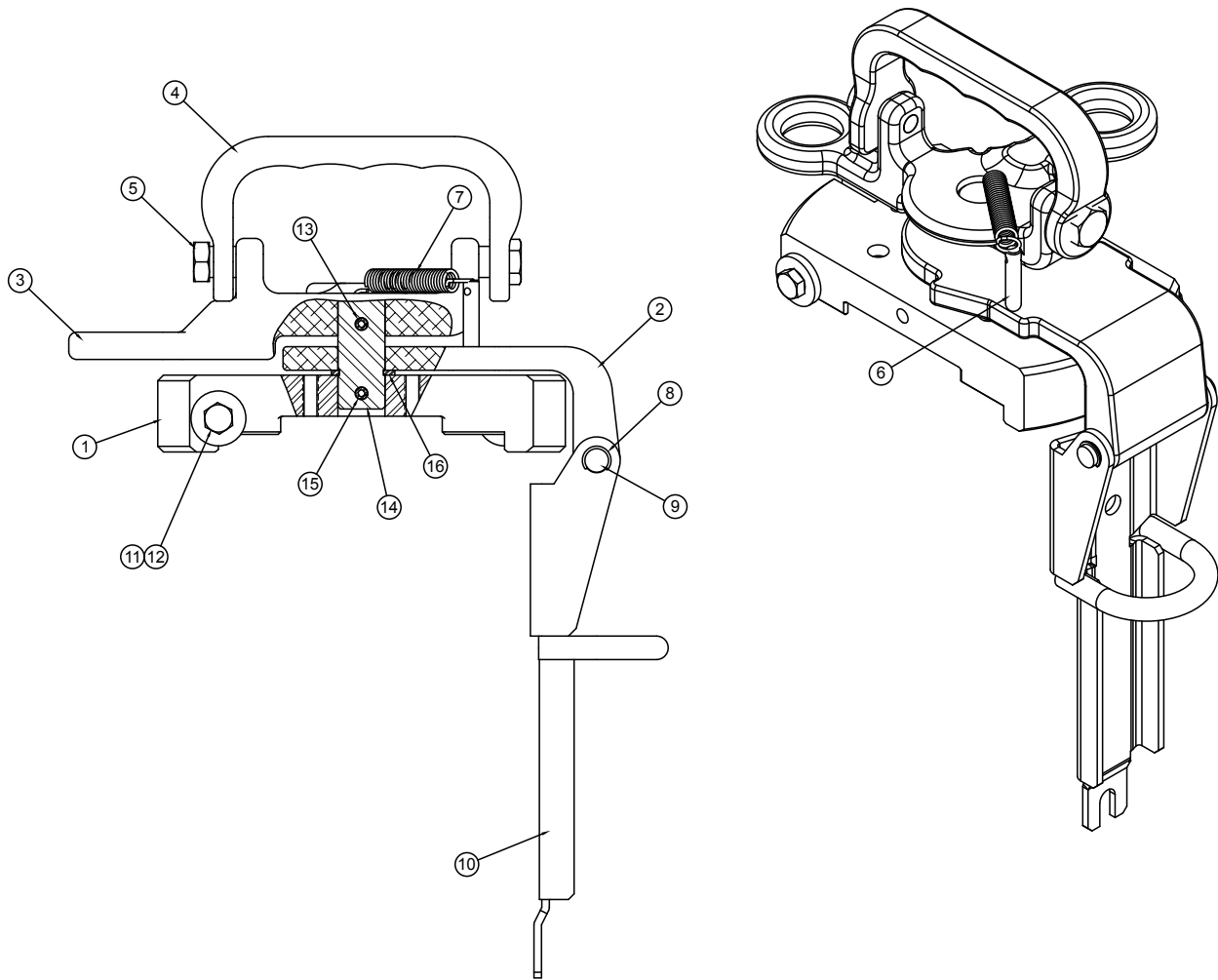
Item #	Part #	Name	Qty.
1	S45160	TOP LOCK	1
2	45145	TOP GUIDE	2
3	97156	FHMS 10-32X.50LG	2
4	45149	LATCH RELEASE	1
5	45092	PISTON LATCH PIN	1
6	45099	SPRING DIE LOCK	1
7	45150	LATCH	1

CAP ASSEMBLY - 45133SS



Item #	Part #	Name	Qty.
1	45153	TOP CARRIER	1
2	45147	TOP LOCK BAR	1
3	45146	TOP BLOCK	1
4	45089	ROLL PIN 3/16 X 9/16 LG	1
5	45088	LOCKWASHER 1/4 HIGH COLLAR	2
6	40843	SHCS 1/4-20 X 1.50	2
7	45090	SPRING PIN	2
8	45096	CABLE ASSM	1
9	45144	TRIGGER TOP DIE LOCK	1
10	45098	SPRING - TOP CARRIER	1
11	45143	TOP DIE PIN	1

CONVERSION KIT- 60AFTC



Item #	Part #	Name	Qty.
NS	82850	SHCS 5/16-24 X .75 LG	2
1	45153	TOP CARRIER	1
2	45167	HINGE	1
3	45162	BASE HANDLE	1
4	45164	HANDLE	1
5	45163	SHOULDER BOLT	2
6	45166	STUD SPRING	1
7	45165	SPRING EXTENSION	1
8	45093	RETAINING RING TRUARC 5103-37	2
9	45171	PIN HINGE	1
10	45168	BRACKET LIFT ASSM	1
11	45185	1/4 FENDER WASHER	1
12	45087	HHCS 1/4-20 X .50	2
13	45091	SPRING PIN	1
14	45161	POST PIVOT	1
15	80272	ROLL PIN 3/16 X 1-1/2 LG	1
16	45097	RETAINING RING TRUARC 5160-75	1

